

EQUIP. TYPE *R390A/URR* EXP. NO. _____

COL. *540 7924 002*

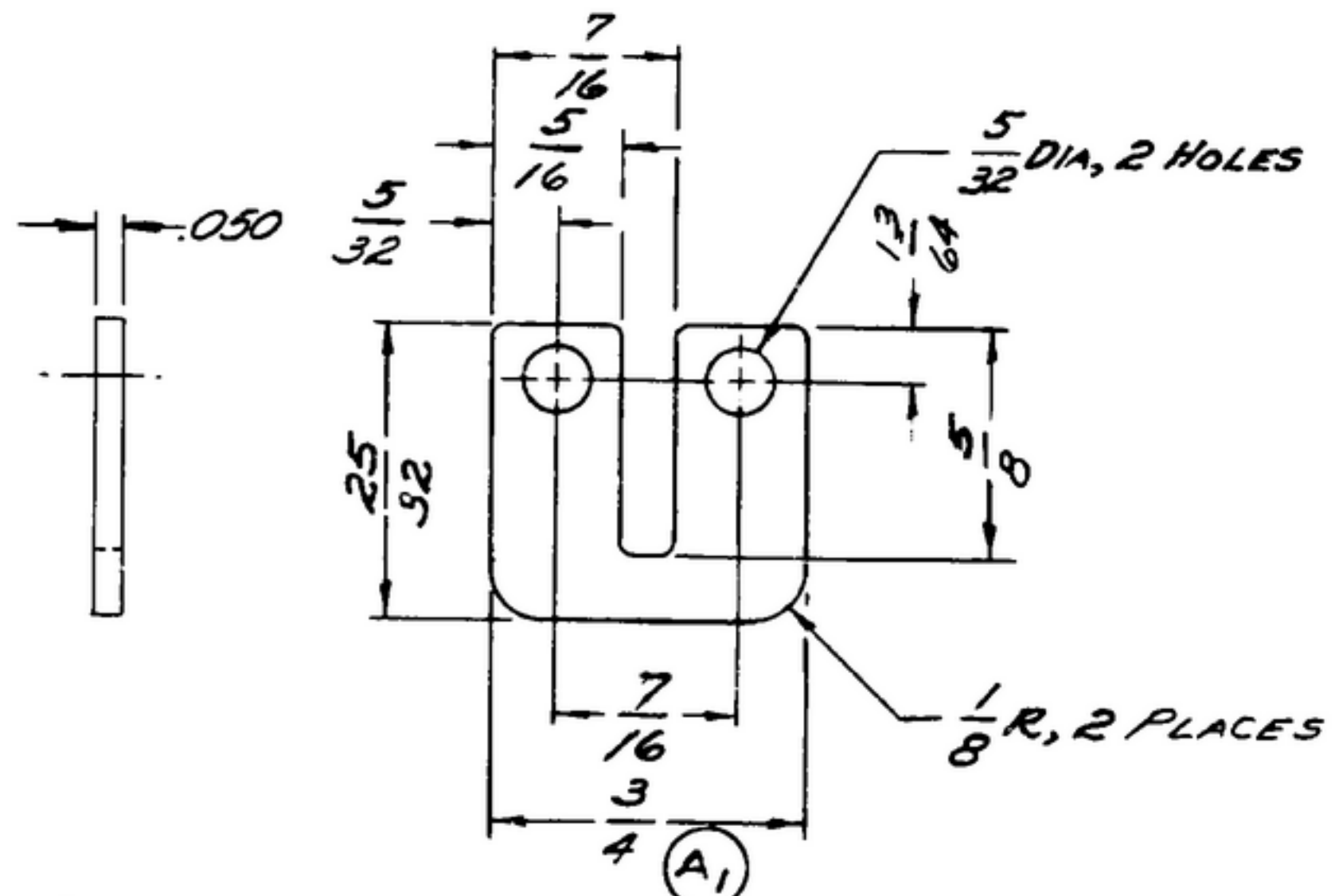
NOTICE: WHEN GOVERNMENT DRAWINGS, SPECIFICATIONS, OR OTHER DATA ARE USED FOR ANY PURPOSE OTHER THAN IN CONNECTION WITH A DEFINITELY RELATED GOVERNMENT PROCUREMENT OPERATION, THE UNITED STATES GOVERNMENT THEREBY INCURS NO RESPONSIBILITY FOR ANY APPLICATION WHATSOEVER AND THE FACT THAT THE GOVERNMENT MAY HAVE FORMULATED, FURNISHED, OR IN ANY WAY SUPPLIED THE SAID DRAWINGS, SPECIFICATIONS, OR OTHER DATA IS NOT TO BE REGARDED BY IMPLICATION OR OTHERWISE AS IN ANY MANNER LICENSING THE HOLDER OR ANY OTHER PERSON OR CORPORATION, OR CONVEYING ANY RIGHTS OR PERMISSION TO MANUFACTURE, USE, OR SELL ANY PATENTED INVENTION THAT MAY IN ANY WAY BE RELATED THERETO.

THIS DOCUMENT HAS BEEN PURCHASED BY THE GOVERNMENT AND MAY BE REPRODUCED AND USED IN CONNECTION WITH ANY GOVERNMENT PROCUREMENT OR MAINTENANCE OPERATION.

*FOR INFORMATION ONLY. CONTRACTOR MAY AT HIS OPTION DEVIATE FROM THESE PROCESS DETAILS.

~~*SWE APPROVAL~~
~~SYM PR10042-6~~

REVISIONS			
SYM	DESCRIPTION	DATE	APPROVAL
A ₂	A ₁ - WAS 52S; A ₂ - ADDED APPL. SM-D-343623;	15 OCT. 59	4242B-PC-59-AI-51 REV'D PME



NOTES:
1. UNLESS OTHERWISE SPECIFIED ALL INSIDE & OUTSIDE RADII 1/32 MAX.

ALUMINUM ALLOY 5052, TEMPER H32, PER SPEC QQ-A-318

FINISH: E513 PER SPEC MIL-F-14072

*COLLINS 580 0036 00

A₂

COLLINS PART NO.	ITEM	REQD	PART NO.	DESCRIPTION	MATL	MATL SPEC
LIST OF MATERIAL						
COLLINS PART NO. <i>558 0468 002</i>						

DRAWN <i>Hamer</i>		CHECKED <i>Rhm</i>		APPROVED		COLLINS-RADIO-GO -SIGNAL-CORPS-1954- <i>14214-PH-51-93</i>		<i>JUMPER</i>		DEPARTMENT OF THE ARMY SIGNAL CORPS ENGINEERING LABORATORIES FORT MONMOUTH NEW JERSEY	
UNLESS OTHERWISE SPECIFIED: DECIMAL DIMENSIONS INCLUDING HOLE SIZES MAY VARY ±.008 FRACTIONAL DIMENSIONS INCLUDING HOLE SIZES MAY VARY ±1/64 MACHINED ANGLES MAY VARY ±.1° SHEARED ANGLES MAY VARY ±.25° BROKEN ANGLES MAY VARY ±.1° ECCENTRICITY BETWEEN ANY DIAMETERS ON THE SAME CENTERLINE SHALL NOT EXCEED .010 TOTAL INDICATOR READING. ALL DIMENSIONS ARE FINISH DIMENSIONS INCLUDING APPLIED FINISH AND ARE GIVEN IN INCHES.		REVIEWED <i>PME</i>		APPROVED <i>HLV</i> <i>PME</i>		DATE <i>15 DEC 55</i>					
558-0487-004		SM-D-343623		SM-D-249135		SC-DL-248775		<i>SM-B-249116</i>			
COLLINS NO.	QTY	NEXT ASSY	USED ON	APPLICATION							