

DT 15

EQUIP. TYPE R390A/URR REF. NO.

COL 54 6248 002

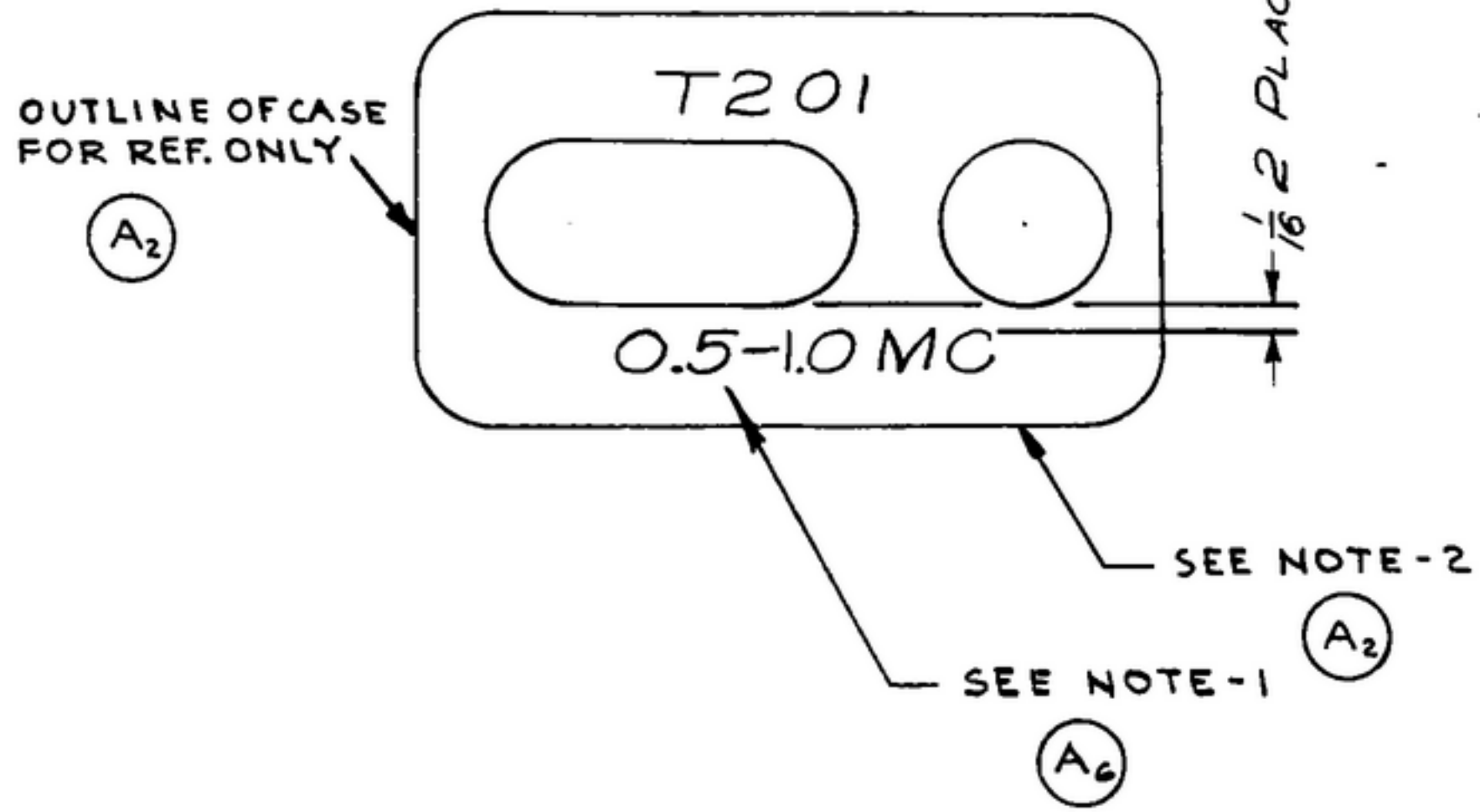
NOTICE: WHEN GOVERNMENT DRAWINGS, SPECIFICATIONS, OR OTHER DATA ARE USED FOR ANY PURPOSE OTHER THAN IN CONNECTION WITH A DEFINITELY RELATED GOVERNMENT PROCUREMENT OPERATION, THE UNITED STATES GOVERNMENT THEREBY INCURS NO RESPONSIBILITY FOR ANY INFORMATION WHATSOEVER; AND THE FACT THAT THE GOVERNMENT MAY HAVE FORMULATED, FURNISHED, OR IN ANY MANNER SUPPLIED THE SAID DRAWINGS, SPECIFICATIONS, OR OTHER DATA IS NOT TO BE REGARDED AS IMPLICATION OR OTHERWISE AS IN ANY MANNER LICENSING THE HOLDER OR ANY OTHER PERSON OR CORPORATION, OR CONVEYING ANY RIGHTS OR PERMISSION TO MANUFACTURE, USE, OR SELL ANY PATENTED INVENTION THAT MAY IN ANY WAY BE RELATED THERETO.

THIS DOCUMENT HAS BEEN PURCHASED BY THE GOVERNMENT AND MAY BE REPRODUCED AND USED IN CONNECTION WITH ANY GOVERNMENT PROCUREMENT OR MAINTENANCE OPERATION.

* FOR INFORMATION ONLY. CONTRACTOR MAY AT HIS OPTION DEVIATE FROM THESE PROCESS DETAILS.

REVISIONS			
SYM	DESCRIPTION	DATE	APPROVAL
A ₁	NOTE 1 WAS "SILK SCREENING TO BE BLACK ETC."	17 NOV. 59	42428-PC-59-A1-51
A ₂	ADD CALLOUTS, A ₃ DELETED		REV'D
A ₃	ITEM 2 SM-B-249172		PME
A ₄	TITLE WAS "CAN-ANT"		
A ₅	NOTE 2 WAS "SILK SCREENING IN ACCORDANCE WITH COLLINS SPEC. ETC." A ₆ - SEE NOTE 1		
A ₆	REPLACED SILK SCREEN NOTATION		

X SWE APPROVAL	
SYM	PR10042/12



- NOTES:
- A₁ 1.-ALL CHARACTERS TO BE $\frac{3}{32}$ HIGH GOTHIC TYPE PER SPEC. MIL-M-13231 GROUP II, COLOR TO BE BLACK, COLOR CHIP NO. 27038 PER FED. STD. 595 MARKINGS TO BE CENTRALLY LOCATED $\pm \frac{1}{32}$ UNLESS OTHERWISE SHOWN COVER DESIGNATIONS WITH ONE COAT OF VARNISH PER MIL-V-173, TYPE II
 - A₅ 2.-MARK WITH PRIME MANUFACTURERS NAME OR REGISTERED TRADEMARK AND PART NUMBER PER MIL-M-13231 GROUP-II (* STEWART-WARNER ELECTRONICS, CHICAGO, ILL-249086)

COLLINS PART NO.	ITEM	REQD	PART NO.	DESCRIPTION	MATL	MATL SPEC
SA 558 0405 002	1	1	SM-B-249054	CAN - SHIELD		

LIST OF MATERIAL COLLINS PART NO. 558 0510 002

DRAWN <i>NUGEN</i>				CHECKED <i>[Signature]</i>		APPROVED		COLLINS-RADIO CO. 8800 S. RIVERSIDE, IOWA 14214-PH-51-93		DEPARTMENT OF THE ARMY SIGNAL CORPS ENGINEERING LABORATORIES FORT MONMOUTH NEW JERSEY	
UNLESS OTHERWISE SPECIFIED: DECIMAL DIMENSIONS INCLUDING HOLE SIZES MAY VARY $\pm .005$ FRACTIONAL DIMENSIONS INCLUDING HOLE SIZES MAY VARY $\pm 1/64$ MACHINED ANGLES MAY VARY $\pm 1^\circ$ SHEARED ANGLES MAY VARY $\pm 28'$ BROKEN ANGLES MAY VARY $\pm 1^\circ$ ECCENTRICITY BETWEEN ANY DIAMETERS ON THE SAME CENTERLINE SHALL NOT EXCEED .010 TOTAL INDICATOR READING. ALL DIMENSIONS ARE FINISH DIMENSIONS INCLUDING APPLIED FINISH AND ARE GIVEN IN INCHES.				SIGNAL CORPS		REVIEWED <i>PME</i>		CAN-MARKED			
APPLICATION				APPROVED <i>HLV</i>		APPROVED <i>PME</i>					
558 0437 004	1	SM-D-249086	SGDL-248775	DATE <u>15 FEB 56</u>		SCALE <u>2/1</u>		SM-B-249157			