

1.76

EQUIP. TYPE *R390A/URR* EXP. NO.

*COL 304 0015 00*

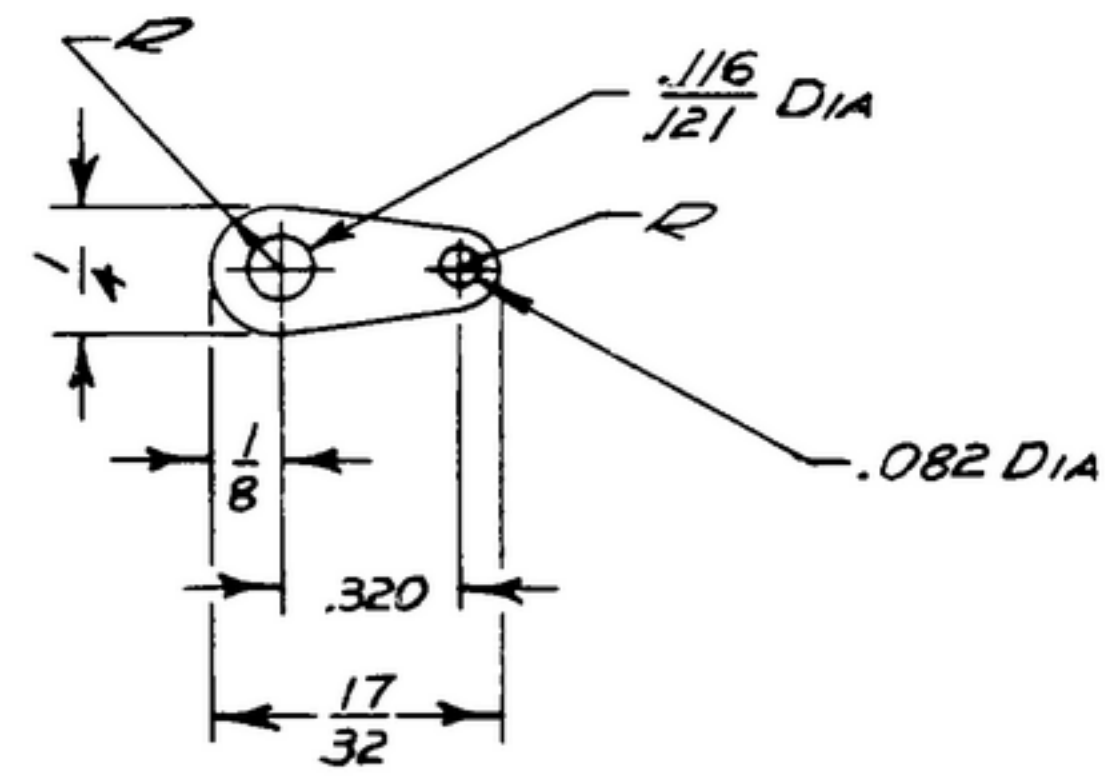
NOTICE: WHEN GOVERNMENT DRAWINGS, SPECIFICATIONS, OR OTHER DATA ARE USED FOR ANY PURPOSE OTHER THAN IN CONNECTION WITH A DEFINITELY RELATED GOVERNMENT PROCUREMENT OPERATION, THE UNITED STATES GOVERNMENT THEREBY INCURS NO RESPONSIBILITY NOR ANY OBLIGATION WHATSOEVER; AND THE FACT THAT THE GOVERNMENT MAY HAVE FORMULATED, FURNISHED, OR IN ANY WAY SUPPLIED THE SAID DRAWINGS, SPECIFICATIONS, OR OTHER DATA IS NOT TO BE REGARDED BY IMPLICATION OR OTHERWISE AS IN ANY MANNER LICENSING THE HOLDER OR ANY OTHER PERSON OR CORPORATION, OR CONVEYING ANY RIGHTS OR PERMISSION TO MANUFACTURE, USE, OR SELL ANY PATENTED INVENTION THAT MAY IN ANY WAY BE RELATED THERETO.

THIS DOCUMENT HAS BEEN PURCHASED BY THE GOVERNMENT AND MAY BE REPRODUCED AND USED IN CONNECTION WITH ANY GOVERNMENT PROCUREMENT OR MAINTENANCE OPERATION.

\*FOR INFORMATION ONLY. CONTRACTOR MAY AT HIS OPTION DEVIATE FROM THESE PROCESS DETAILS.

REVISIONS			
SYM	DESCRIPTION	DATE	APPROVAL
A <sub>1</sub>	(1) NOTE DELETED.	22 MAY 1963	ECR-F30523 JIC M. B. D.B.

(A<sub>1</sub>)



NOTES:  
 1. PART MAY BE #4007 AS SUPPLIED BY PATTON MAC GUNER CO, PROVIDENCE, RHODE ISLAND, OR EQUAL, PROVIDING IT MEETS THE FOLLOWING REQUIREMENTS & DIMENSIONS SHOWN.

MATERIAL: COPPER 0.016 THICK  
 FINISH: A221 PER SPEC MIL-F-14072.

COLLINS PART NO.	ITEM	REQD	PART NO.	DESCRIPTION	MATL	MATL SPEC
LIST OF MATERIAL						
COLLINS PART NO. <del>559-0202-002</del>						

		SM-D-144655	
		SM-D-194892	SC-DL-144500
		SM-D-143744	
		SM-B-143620	
		SM-C-143518	
		SM-D-143396	
		SM-D-144399	SC-DL-143280
558-0451-004	3	SM-D-249100	SC-DL-248775
COLLINS NO.	QTY	NEXT ASSY	USED ON

DRAWN  
ECS

CHECKED  
*Rlm*

APPROVED

UNLESS OTHERWISE SPECIFIED:  
 DECIMAL DIMENSIONS INCLUDING HOLE SIZES MAY VARY  $\pm .008$   
 FRACTIONAL DIMENSIONS INCLUDING HOLE SIZES MAY VARY  $\pm 1/64$   
 MACHINED ANGLES MAY VARY  $\pm .1^\circ$   
 SHEARED ANGLES MAY VARY  $\pm .25^\circ$   
 BROKEN ANGLES MAY VARY  $\pm 1^\circ$   
 ECCENTRICITY BETWEEN ANY DIAMETERS ON THE SAME CENTERLINE SHALL NOT EXCEED  $.010$  TOTAL INDICATOR READING.  
 ALL DIMENSIONS ARE FINISH DIMENSIONS INCLUDING APPLIED FINISH AND ARE GIVEN IN INCHES.

COLLINS RADIO CO.  
 CEDAR RAPIDS, IOWA  
 14214-PH-51-93

SIGNAL CORPS

REVIEWED *PME*

APPROVED *HLT*  
*PME*

DATE *16 JAN 56* SCALE *2/1*

DEPARTMENT OF THE ARMY  
 SIGNAL CORPS ENGINEERING  
 LABORATORIES

FORT MONMOUTH NEW JERSEY

*SM-B-249250*

*TERMINAL-SOLDER*