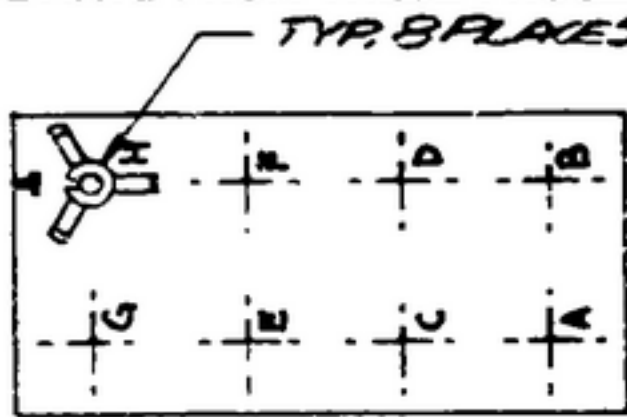


NOTICE: WHEN GOVERNMENT DRAWINGS, SPECIFICATIONS, OR OTHER DATA ARE USED FOR ANY PURPOSE OTHER THAN IN CONNECTION WITH A DEFINITELY RELATED GOVERNMENT PROCUREMENT OPERATION, THE UNITED STATES GOVERNMENT THEREBY INCURS NO RESPONSIBILITY NOR ANY OBLIGATION WHATSOEVER; AND THE FACT THAT THE GOVERNMENT MAY HAVE FORMULATED, FURNISHED, OR IN ANY WAY SUPPLIED THE SAID DRAWINGS, SPECIFICATIONS, OR OTHER DATA IS NOT TO BE REGARDED BY IMPLICATION OR OTHERWISE AS IN ANY MANNER LICENSING THE HOLDER OF ANY OTHER PATENT OR COPYRIGHT, OR CONVEYING ANY RIGHTS OR PERMISSION TO MANUFACTURE, USE, OR SELL ANY PATENTED INVENTION THAT MAY IN ANY WAY BE RELATED THERETO.

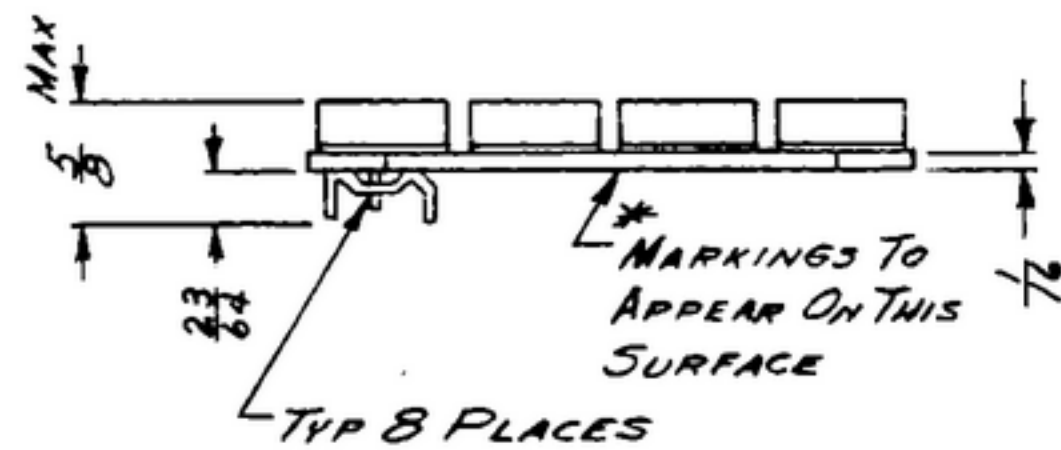
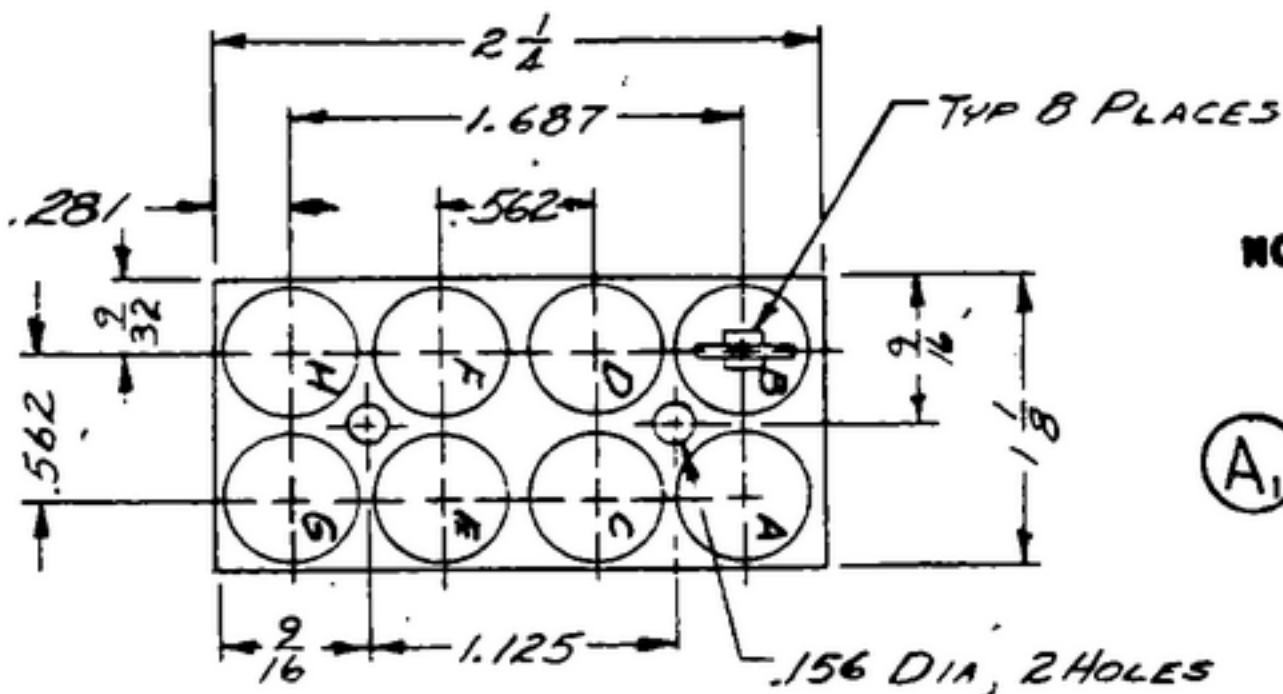
THIS DOCUMENT HAS BEEN PURCHASED BY THE GOVERNMENT AND MAY BE REPRODUCED AND USED IN CONNECTION WITH ANY GOVERNMENT PROCUREMENT OR MAINTENANCE OPERATION.

*FOR INFORMATION ONLY. CONTRACTOR MAY AT HIS OPTION DEVIATE FROM THESE PROCESS DETAILS.

REVISIONS			
SYM	DESCRIPTION	DATE	APPROVAL
A ₁	A ₁ REVISED MAT'L NOTE	6 NOV 59	42428-PC-59 -A1-51 REV'D PME
B ₁	B ₁ MARKING LETTERS CORRECTED AND PUT ON REAR VIEW WHERE REQUIRED	5 APRIL 60	42428-PC-59 REV'D PME



REAR VIEW



NOTES:

1. PART MAY BE TYPE 9189, SUPPLIED BY ERIE RESISTOR CORP., ERIE, PA., OR EQUAL, PROVIDING IT MEETS THE FOLLOWING REQUIREMENTS AND DIMENSIONS SHOWN.

(A) **DESCRIPTION:** SINGLE PHENOLIC BOARD WITH 8 VARIABLE CERAMIC CAPACITORS MOUNTED THEREON.
MATERIAL: PHENOLIC-PANELYTE GRADE 782, AS SUPPLIED BY ST. REGIS PAPER CO., PANELYTE DIV., RICHMOND, IND., OR EQUAL.

WORKING VOLTAGE: 350 VOLTS DC.

FLASH TEST: 700 VOLTS DC.

INITIAL Q FACTOR AT 1 MC: 500 MINIMUM

INITIAL LEAKAGE RESISTANCE: 10,000 MEGOHM. MIN.

MOISTURE RESISTANCE: CAPACITORS SHALL WITHSTAND TESTS PER SPEC. MIL-C-81.

MARKING: TOP OF INDIVIDUAL CAPACITORS SHALL BE MARKED WITH TEMPERATURE COEFFICIENT AND NOMINAL CAPACITY RANGE. BOTTOM OF BOARD SHALL BE MARKED WITH IDENTIFYING LETTERS ADJACENT TO CAPACITORS TERMINALS AND CONTRACTORS PART NUMBER, & SHALL MEET THE TEST REQUIREMENTS OF SPEC MIL-H-13231.

CAPACITY AND TEMPERATURE COEFFICIENT:

CAPACITOR NO.'S.	CAPACITANCE IN UUF				TEMPERATURE COEFFICIENT
	MAX.	MIN.	MIN. MAX.	MAX. MAX.	
A AND B	8.0	50.0	75.0		N750 PPM/°C
C THRU H	5.0	25.0	37.5		ZERO PPM/°C

CENTER SHAFT SHALL HAVE A SCREW DRIVER SLOT PARALLEL (±20°) TO SLOT IN CERAMIC AND SHALL BE SOLDERED TO THE ROTOR.
CONTACTS SHALL BE ORIENTED AS SHOWN.

COLLINS PART NO.	ITEM	QTY	PART NO.	DESCRIPTION	MATL.	MATL. SPEC.
LIST OF MATERIAL						
COLLINS PART NO. <i>559-0415-002</i>						

DRAWN <i>Mml</i>				CHECKED <i>Phm</i>		APPROVED		COLLINS-RADIO-CO. -DESAR-RAMES, IOWA- <i>14214-PH-51-93</i>		DEPARTMENT OF THE ARMY SIGNAL CORPS ENGINEERING LABORATORIES FORT MONMOUTH NEW JERSEY	
UNLESS OTHERWISE SPECIFIED: DECIMAL DIMENSIONS INCLUDING HOLE SIZES MAY VARY ±.008 FRACTIONAL DIMENSIONS INCLUDING HOLE SIZES MAY VARY ±1/64 MACHINED ANGLES MAY VARY ±.1° SHEARED ANGLES MAY VARY ±.25° BROKEN ANGLES MAY VARY ±.1° ECCENTRICITY BETWEEN ANY DIAMETERS ON THE SAME CENTERLINE SHALL NOT EXCEED .010 TOTAL INDICATOR READING. ALL DIMENSIONS ARE FINISH DIMENSIONS INCLUDING APPLIED FINISH AND ARE GIVEN IN INCHES.				SIGNAL CORPS		REVIEWED <i>PME</i>		<i>CAPACITOR-VARIABLE</i>			
<i>559-0396-004</i> - <i>1</i> - <i>SM-D-249007</i> - <i>5C-DL-248775</i>				APPROVED <i>HLV</i>		APPROVED <i>PME</i>				<i>SM-B-283231</i>	
APPLICATION				DATE <i>25-Nov-55</i>		SCALE <i>1/1</i>					