

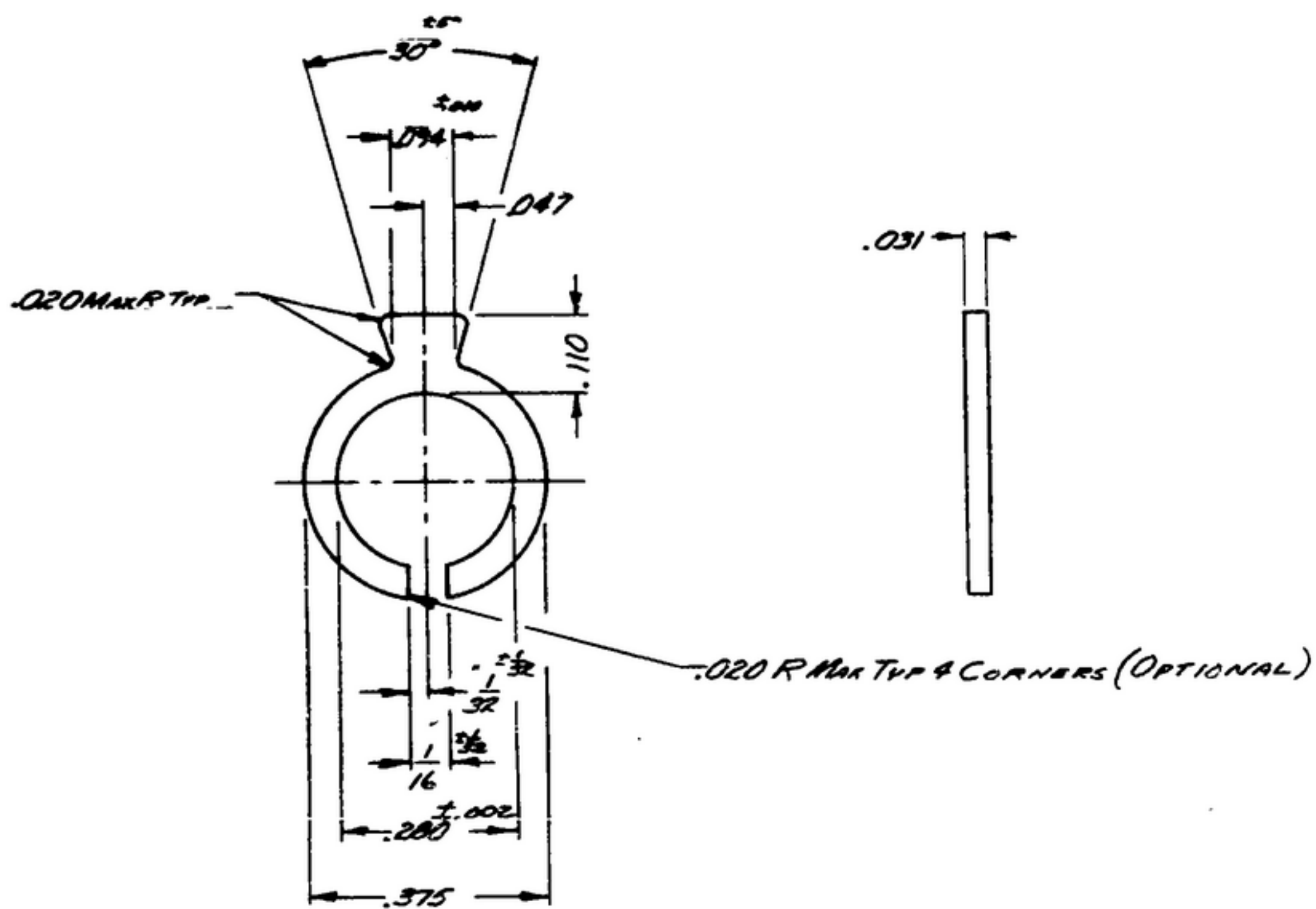
506-1372-002

R391

REVISIONS

SYM	DESCRIPTION	DATE	APPROVAL

NOTED: WHEN GOVERNMENT SPECIFICATIONS, OR OTHER DATA ARE USED FOR ANY PORTION OF THIS DRAWING IN CONNECTION WITH A GOVERNMENT DELIVERED OR GOVERNMENT OPERATED, THE UNITED STATES GOVERNMENT THEREBY ASSUMES NO RESPONSIBILITY FOR ANY ERRORS OR OMISSIONS AND THE USER MUST VERIFY THE ACCURACY OF ANY DATA, DIMENSIONS, OR MATERIALS USED IN ANY CASE. THE USER MUST VERIFY THE ACCURACY OF ANY DATA, DIMENSIONS, OR MATERIALS USED IN ANY CASE. THE USER MUST VERIFY THE ACCURACY OF ANY DATA, DIMENSIONS, OR MATERIALS USED IN ANY CASE.



PLASTIC, TYPE PBE-P PER MIL-P-5115

QTY	PART NO.	DESCRIPTION	DATE	MATERIAL
LIST OF MATERIAL				

APPLICATION		UNLESS OTHERWISE SPECIFIED	AUTHENTICATION	TERMINAL	SIGNAL CORPS ENGINEERING LABORATORIES FORT MONMOUTH NEW JERSEY SM-B-85398
SM-B-283284		DIMENSIONS ARE IN INCHES	DRAWN E152-PA-50-93		
SM-B-283289		TOLERANCES ON	TRACED <i>Proto</i>		
SM-B-283285		FRACTIONS DECIMALS ANGLES	CHECKED <i>Rbm</i>		
SM-B-85397	SC-DL-178447	$\pm \frac{1}{16}$ $\pm .005$ —	VERIFIED <i>PD BR</i>		
NEXT ASSY	USED ON		APPROVED <i>PD BR</i>		
			REVIEWED <i>PBE</i>		
			DATE 15 Oct 55	SCALE 4/1	