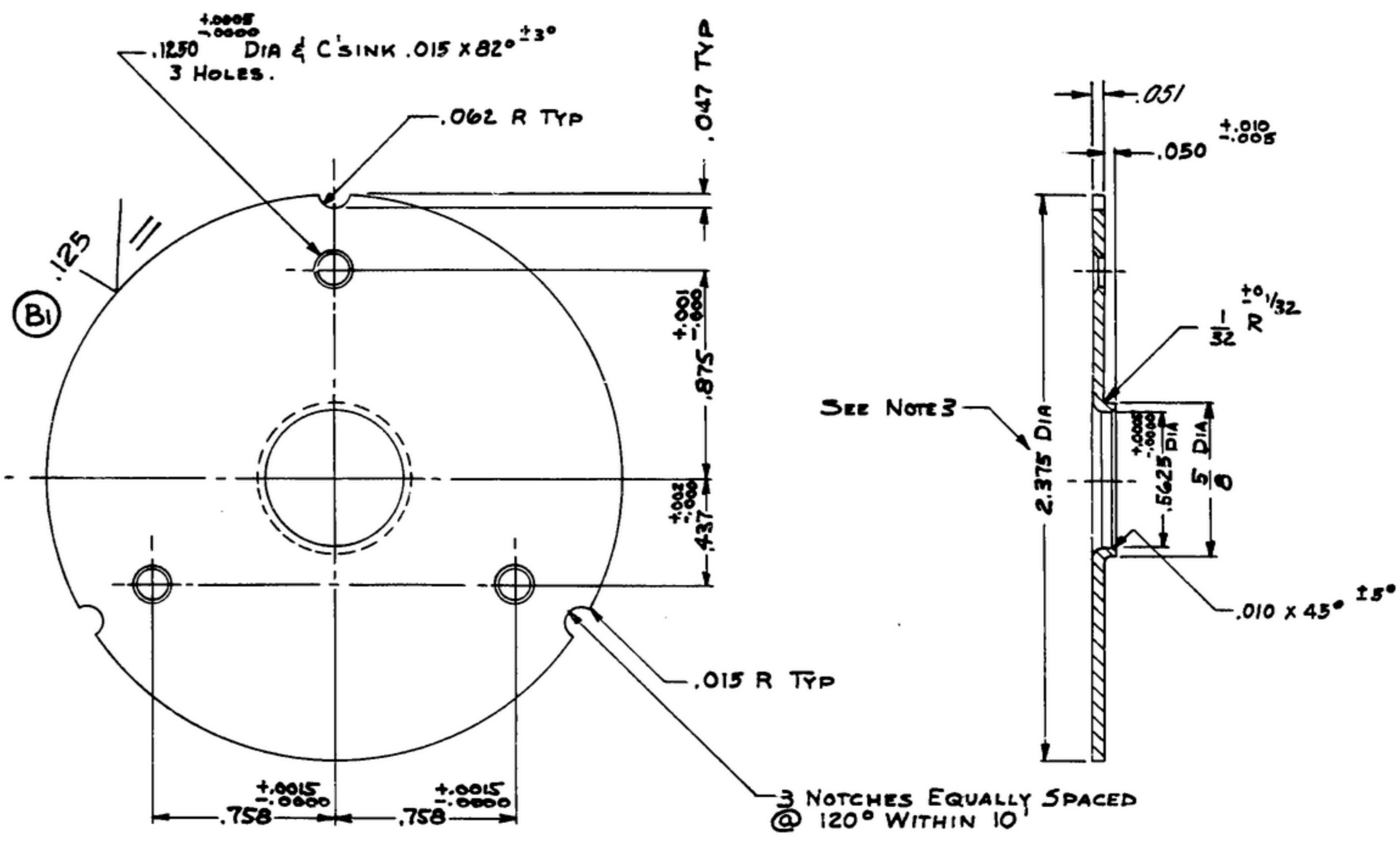


5061920-002-R-391

NOTICE: WHEN GOVERNMENT DRAWINGS, SPECIFICATIONS, OR OTHER DATA ARE USED FOR ANY PURPOSE OTHER THAN IN CONNECTION WITH A DEFINITELY RELATED GOVERNMENT PROCUREMENT OPERATION, THE UNITED STATES GOVERNMENT THEREBY INCURS NO RESPONSIBILITY FOR ANY DELAY OR INACCURACY AND THE FACT THAT THE GOVERNMENT MAY HAVE FORMULATED, PROVIDED, OR IN ANY WAY SUPPLIED THE SAID DRAWINGS, SPECIFICATIONS, OR OTHER DATA IS NOT TO BE REGARDED BY REPLICATION OR OTHERWISE AS IN ANY MANNER LICENSING THE HOLDER OR ANY OTHER PERSON OR CORPORATION, OR CONVEYING ANY RIGHTS OR PRIVILEGES TO MANUFACTURE, USE, OR SELL ANY PATENTED INVENTION THAT MAY IN ANY WAY BE RELATED THERETO.

NOTE
 FOR INFORMATION ONLY.
 CONTRACTOR MAY AT HIS
 OPTION DEVIATE FROM
 THESE PROCESS DETAILS

* S.W.E. APPROVAL		REVISIONS			
SYM	PR-10042/3	SYM	DESCRIPTION	DATE	APPROVAL
A3		A3	A1 RENUMBERED NOTES A2 ADDED APPL SM-B-178876, SC-DL-248775. A3 MATERIAL WAS BRASS PER SPEC QQ-B-611.	6 OCT 59	42428-PC-59-AI-51 REV'D. PME
B2	CA 84781	B2	B1 ADDED LAY SYMBOL TO FINISH MARK. B2 ADDED FINISH NOTE #7	17 MAY 60	42428-PC-59 REV'D. PME



- NOTES:**
- (A1)
 - (A3) 1. CRES STEEL PER SPEC MIL-S-5059 COMP 301 COND 1/2 HARD.
 2. PART MUST BE FREE OF BURRS & SHARP EDGES.
 3. PART MUST BE FLAT WITHIN .010 TIR.
 4. 2.375 DIMENSION IS SHOWN OUT OF POSITION & DOES NOT APPLY TO NOTCH - PERTINENT TO OD ONLY.
 5. POSITION OF NOTCHES WITH RESPECT TO .125 DIA HOLES UNIMPORTANT.
 6. ECCENTRICITY BETWEEN 2.375 DIA & BORE MUST NOT EXCEED .005 TIR.
 - (B2) 7. FINISH: E300 PER SPEC MIL-F-14072

LIST OF MATERIAL

UNLESS OTHERWISE SPECIFIED		AUTHENTICATION	
DIMENSIONS ARE IN INCHES		DRAWN 21883-BH-50-53	
FRACTIONS	DECIMALS	ANGLES	
1/64	±.005	—	TRACED PHOTO
			CHECKED <i>[Signature]</i>
			VERIFIED <i>[Signature]</i>
			APPROVED P.D.B.R.
			REVIEWED PME
			DATE 5-NOV-54

SM-B-178876	SC-DL-248775	PLATE	SIGNAL CORPS ENGINEERING LABORATORIES FORT MONMOUTH NEW JERSEY
SM-B-178876	SC-DL-178467		
NEXT ASSY	USED ON		
APPLICATION			SM-C-178878