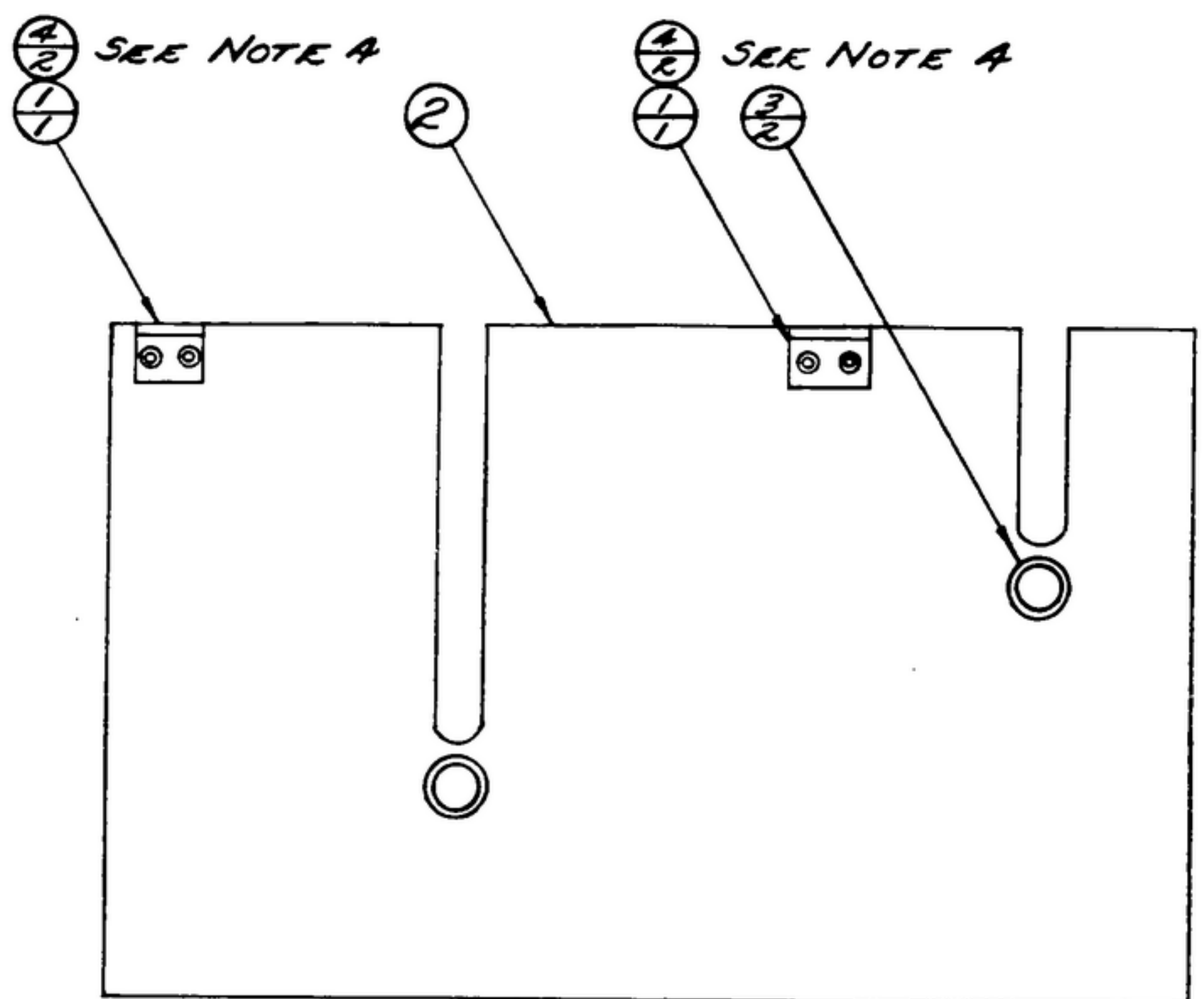


NOTICE: WHEN GOVERNMENT DRAWINGS, SPECIFICATIONS, OR OTHER DATA ARE USED FOR ANY PURPOSE OTHER THAN IN CONNECTION WITH A DEFINITELY RELATED GOVERNMENT PROCUREMENT OPERATION, THE UNITED STATES GOVERNMENT THEREBY INCURS NO RESPONSIBILITY FOR ANY OMISSIONS WHATSOEVER; AND THE FACT THAT THE GOVERNMENT MAY HAVE FORMULATED, FURNISHED, OR IN ANY WAY SUPPLIED THE SAID DRAWINGS, SPECIFICATIONS, OR OTHER DATA IS NOT TO BE REGARDED BY REPLICATION OR OTHERWISE AS IN ANY MANNER LICENSEING THE HOLDER OR ANY OTHER PERSON OR CORPORATION, OR CONVEYING ANY RIGHTS OR PERMISSION TO MANUFACTURE, USE, OR SELL ANY PATENTED INVENTION THAT MAY IN ANY WAY BE RELATED THERETO.

THIS DOCUMENT HAS BEEN PREPARED BY THE GOVERNMENT AND MAY BE REPRODUCED AND USED IN CONNECTION WITH ANY GOVERNMENT PROCUREMENT OR MAINTENANCE OPERATION.

* FOR INFORMATION ONLY, CONTRACTOR MAY AT HIS OPTION DEVIATE FROM THESE PROCESS DETAILS.

REVISIONS			
SYM	DESCRIPTION	DATE	APPROVAL



- NOTES:
1. PRESS BEARINGS (3) INTO PLATE (2) BEARING MUST BE FLUSH TO $\frac{1}{64}$ " BELOW THIS SIDE.
 2. BURNISH BEARINGS TO $.2500^{+0.0005}_{-0.0000}$ DIA.
 3. SECURE BRACKET (1) TO PLATE (2) USING RIVETS (4).
 4. RIVET HEAD (A) TO BE ON OPPOSITE SIDE FROM BRACKET (1).
 5. PLATE TO BE FLAT WITHIN .020 T.I.R.
 6. SLOTS TO BE $.265^{+0.003}_{-0.000}$ AFTER ASSY.
 7. IN ALL SPLIT BALLOONS TOP FIGURE IS MATERIAL LIST ITEM INDICATOR & BOTTOM FIGURE IS QUANTITY.

305 0106 00	4	4	AN456AD3-6	RIVET		
559 0233 002	3	2	SM-B-283154	BEARING		
558 0328 003	2	1	SM-C-248979	PLATE-REAR		
558 0325 002	1	2	SM-A-248976	BRACKET-DUST COVER		
COLLINS-PART NO.	ITEM	REQD	PART NO.	DESCRIPTION	MATL	MATL SPEC

LIST OF MATERIAL

COLLINS-PART NO. *558 0326 003*

COLLINS NO.	QTY	NEXT ASSY	USED ON
<i>558 0324 004</i>	<i>1</i>	<i>SM-D-248975</i>	<i>SC-DL 248775</i>

DRAWN
JENNETT

CHECKED
PL

APPROVED

UNLESS OTHERWISE SPECIFIED:
 DECIMAL DIMENSIONS INCLUDING HOLE SIZES MAY VARY $\pm .005$
 FRACTIONAL DIMENSIONS INCLUDING HOLE SIZES MAY VARY $\pm 1/64$
 MACHINED ANGLES MAY VARY $\pm .1^\circ$
 SHEARED ANGLES MAY VARY $\pm .25^\circ$
 BROKEN ANGLES MAY VARY $\pm .1^\circ$
 ECCENTRICITY BETWEEN ANY DIAMETERS ON THE SAME CENTERLINE SHALL NOT EXCEED .010 TOTAL INDICATOR READING.
 ALL DIMENSIONS ARE FINISH DIMENSIONS INCLUDING APPLIED FINISH AND ARE GIVEN IN INCHES.

COLLINS RADIO CO.
 1421A PH-
 51-93

SIGNAL CORPS

REVIEWED *PME*

APPROVED *HLV*
PME

DATE *28 Dec 55* SCALE *1/1*

DEPARTMENT OF THE ARMY
 SIGNAL CORPS ENGINEERING
 LABORATORIES

FORT MONMOUTH NEW JERSEY

SM-C-248977