

EQUIP. TYPE 2200ALTR EXP. NO.

COL. 540 7885 003

NOTICE: WHEN GOVERNMENT DRAWINGS, SPECIFICATIONS, OR OTHER DATA ARE USED FOR ANY PURPOSE OTHER THAN IN CONNECTION WITH A SPECIFICALLY RELATED GOVERNMENT PROCUREMENT OPERATION, THE UNITED STATES GOVERNMENT THEREBY ASSUMES NO RESPONSIBILITY FOR ANY OMISSIONS, ERRORS, OR THE FACT THAT THE INFORMATION MAY BE OBSOLETE, FURNISHED, OR IN ANY WAY SUPPLIED THE SAID DRAWINGS, SPECIFICATIONS, OR OTHER DATA IS NOT TO BE DEEMED BY REPLICATION OR OTHERWISE AS IN ANY MANNER LICENSING THE HOLDER OR ANY OTHER PERSON OR ORGANIZATION, OR CONFERRING ANY RIGHTS OR PERMISSION TO REPRODUCE, TRANSMIT, OR SELL ANY PATENTED INVENTION THAT MAY IN ANY WAY BE RELATED THEREBY.

THIS DOCUMENT HAS BEEN PURCHASED BY THE GOVERNMENT AND MAY BE REPRODUCED AND USED IN CONNECTION WITH ANY GOVERNMENT PROCUREMENT OR MAINTENANCE OPERATION.

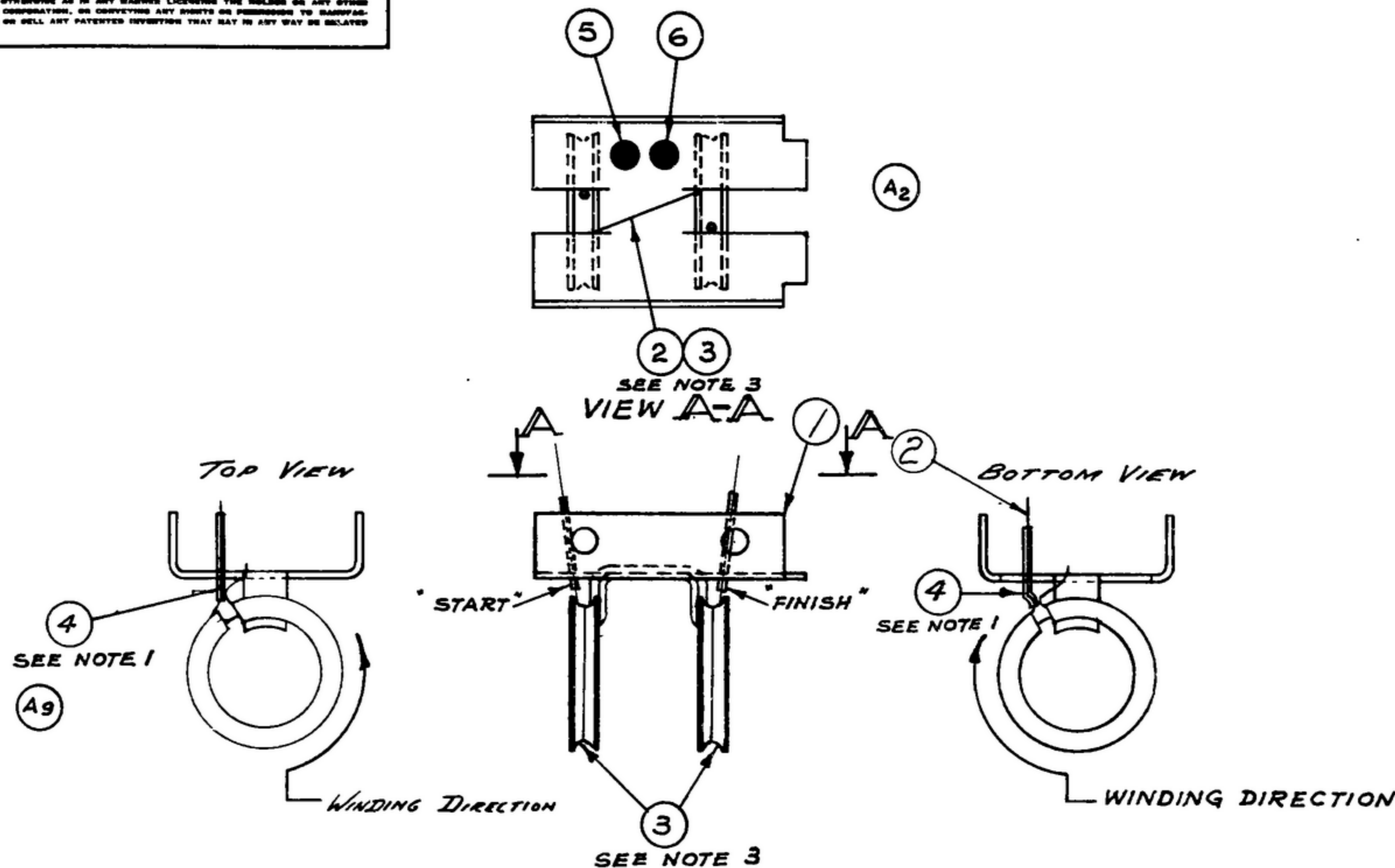
*FOR INFORMATION ONLY. CONTRACTOR MAY AT HIS OPTION DEVIATE FROM THESE PROCESS DETAILS.

*SWE APPROVAL
SYM PRIOR 48-17

REVISIONS

SYM	DESCRIPTION	DATE	APPROVAL
A ₁₀	A ₁ - RENUMBERED NOTES A ₂ - ADDED VIEW "A-A" NOTATIONS & CALLOUTS; A ₃ - ADDED ITEMS 4, 5 & 6; A ₄ - ADDED NOTES 1, 2 & 5; A ₅ - REMOVED NOTE 3 "PART NO. A 27" WAS "TRANSPARENT Q WAS "SINGLE CONDUCTOR, MAX. NO. 27"; A ₆ - NOTE 4 WAS "SILK MAGNET NO. 28"; A ₇ - ITEM 3 "LACQUER" WAS "COATING MATERIAL"; A ₈ - SWE PART NO. REPLACED COLLINS PART NO. A ₉ - ADDED VIEW OF SLEEVING; A ₁₀ - IN ITEM 2 DESCRIPTION WAS "WIRE" & MAT'L SPEC. WAS "ASAG 8.6 & CB.7".	16 DEC 59	42428-PC-51 -59-A1-51

REV'D.
PME



WINDING DATA	
TOP LINK	7 TURNS
BOTTOM LINK	7 TURNS

NOTES: (A₁)

- (A₄) 1. ALLOWING 1 1/2 INCHES FOR LEAD LENGTHS, INSERT 1/2 INCH SLEEVING UP TO "START" OF WINDING & WIND REQUIRED NUMBER OF TURNS ON TOP & BOTTOM LINKS.
- (A₅) 2. INSERT 5/8 INCH SLEEVING UP TO "FINISH" OF WINDING ANCHOR BOTH LEADS TO BRACKET.
- (A₆) 3. APPLY COATING MATERIAL (ITEM 3) AS SUPPLIED BY COMMUNICATIONS PRODUCTS CO. MARLBORO NEW JERSEY, PART #A-27 OR EQUAL TO HOLD WINDING IN PLACE.
- (A₇) 4. SINGLE CONDUCTOR, SINGLE SILK, HEAVY POLYURETHANE #28 AWG MAGNET WIRE.
- (A₈) 5. APPLY COLOR CODING LACQUERS (ITEM 5 & 6) LOCATED AS SHOWN.

SYM	ITEM	REQD	PART NO.	DESCRIPTION	MATL	MATL SPEC	NOTES
(A ₃)	6	AS REQD		LACQUER, RED, CODING		TT-L-31	5
(A ₄)	5	AS REQD		LACQUER, BLACK, CODING		TT-L-31	5
(A ₇)	4	1	SM-B-249214	SLEEVING, SILICONE 1 1/8 IN.			1 & 2
(A ₁₀)	3	AS REQD		LACQUER			3
(A ₈)	2	1	SM-C-249079-1	WIRE, MAGNET, 26 1/2 IN.		MIL-W-583	4
(A ₉)	1	1	SM-C-249078	LINK ASSY			

# SWE PART NO.	ITEM	REQD	PART NO.	DESCRIPTION	MATL	MATL SPEC	NOTES
LIST OF MATERIAL							

COLLINS PART NO. 558-0430-003

DRAWN JENNETT	CHECKED PME	APPROVED HLY	COLLINS-RADIO CO. 558-0430-003 14214-PH 51-93 SIGNAL CORPS REVIEWED PME APPROVED HLY PME DATE 29 DEC 55 SCALE 2/1	DEPARTMENT OF THE ARMY SIGNAL CORPS ENGINEERING LABORATORIES FORT MONMOUTH NEW JERSEY SM-C-249079
UNLESS OTHERWISE SPECIFIED: DECIMAL DIMENSIONS INCLUDING HOLE SIZES MAY VARY ±.008 FRACTIONAL DIMENSIONS INCLUDING HOLE SIZES MAY VARY ±1/64 MACHINED ANGLES MAY VARY ±.1° SHEARED ANGLES MAY VARY ±.25° BROKEN ANGLES MAY VARY ±.1° ECCENTRICITY BETWEEN ANY DIAMETERS ON THE SAME CENTERLINE SHALL NOT EXCEED .010 TOTAL INDICATOR READING. ALL DIMENSIONS ARE FINISH DIMENSIONS INCLUDING APPLIED FINISH AND ARE GIVEN IN INCHES.			LINK ASSY	