

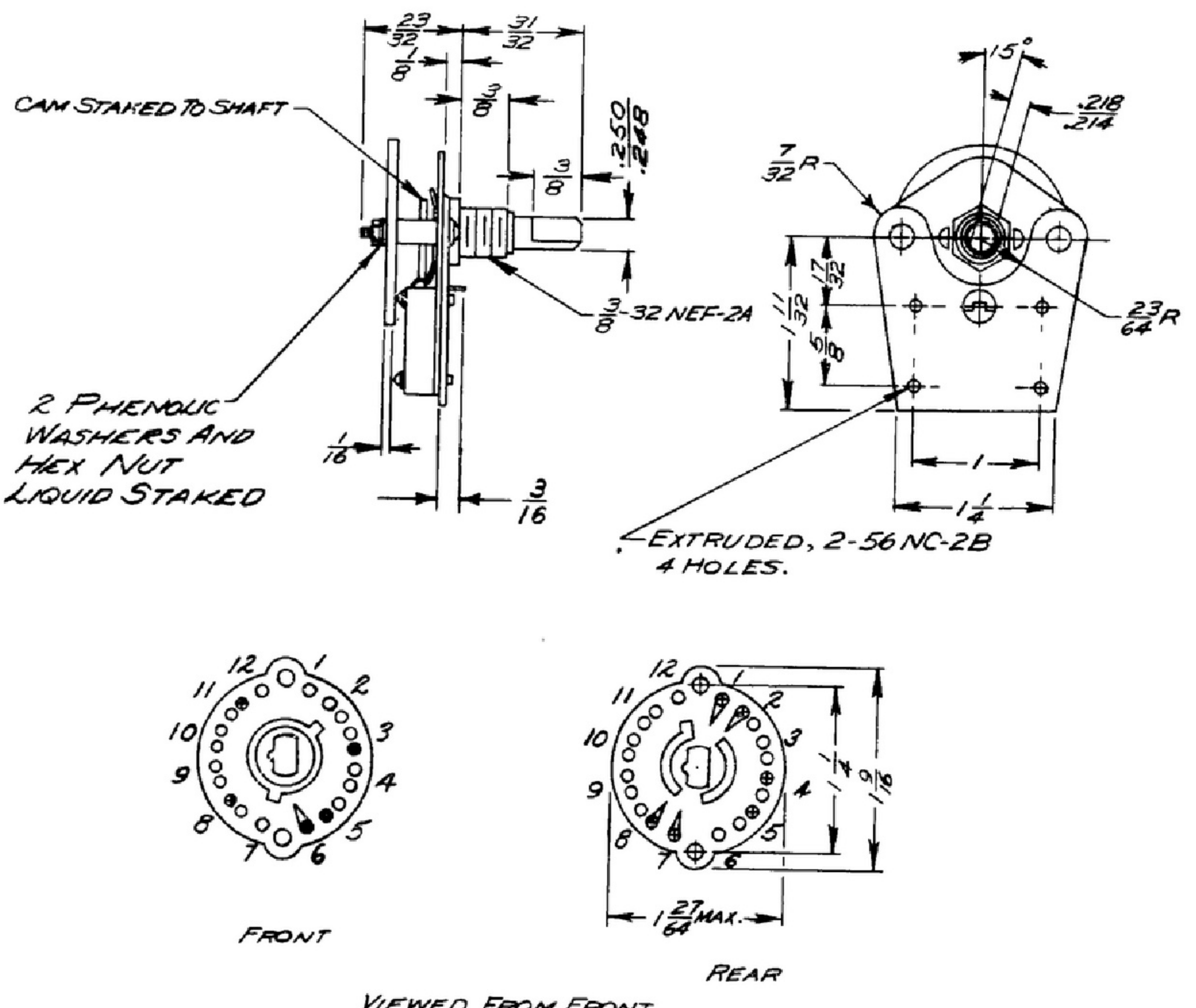
NOTICE: WHEN GOVERNMENT DRAWINGS, SPECIFICATIONS, OR OTHER DATA ARE USED FOR ANY PURPOSE OTHER THAN IN CONNECTION WITH A SPECIFICALLY RELATED BUYING, NO RESPONSIBILITY FOR ANY INADEQUACY, WHETHER OR NOT THE UNITED STATES GOVERNMENT HAS BEEN PURCHASED BY THE GOVERNMENT AND WHEN IN CONNECTION WITH ANY GOVERNMENT PROCUREMENT OR MAINTENANCE OPERATION.

THIS DOCUMENT HAS BEEN PURCHASED BY THE GOVERNMENT AND MAY BE REPRODUCED AND USED IN CONNECTION WITH ANY GOVERNMENT PROCUREMENT OR MAINTENANCE OPERATION.

* FOR INFORMATION ONLY. CONTRACTOR MAY AT HIS OPTION DEVIATE FROM THESE PROCESS DETAILS.

~~SWE APPROVAL~~
SYM PR10042-7

REVISIONS				
SYM	DESCRIPTION	DATE	APPROVAL	
A ₂	A, MIL-M-14 WAS MIL-P-14 A ₂ ADDED ACCORDANCE WITH MIL-F-14072	19 OCT 59	42428-PC 59-A1-S1	REV'D PME



NOTES:

1. PART MAY BE NO. B9802-4 MLW-1-AC, AS SUPPLIED BY GRIGSBY-ALLISON, ARLINGTON HEIGHTS, ILL., OR EQUAL, PROVIDING IT MEETS THE FOLLOWING REQUIREMENTS AND DIMENSIONS SHOWN.

DESCRIPTION: ROTARY WAFER SWITCH ASSEMBLY CONSISTING OF ROTARY WAFER SWITCH AND SENSITIVE SWITCH. ROTARY WAFER SWITCH SHALL BE IN ACCORDANCE WITH SPEC MIL-S-3786 EXCEPT AS NOTED BELOW. SENSITIVE SWITCH SHALL BE IN ACCORDANCE WITH SPEC JAN-S-63, AS APPLICABLE.
CONSTRUCTION: 3 CIRCUIT (3 POLE), 6 POSITION, 30° DETENT, ROTARY WAFER SWITCH WITH CAM OPERATED SENSITIVE SWITCH (ACRO MFG. 1M01-1A), WITH STOPS LIMITING ROTATION TO 6 POSITIONS. CAM MUST DEPRESS PLUNGER IN POSITION 1 ONLY. WHEN SWITCH OPERATES IN A CLOCKWISE DIRECTION, SENSITIVE SWITCH MUST OPERATE ON OR BEFORE 24° FROM POSITION 1. WHEN SWITCH OPERATES IN A COUNTERCLOCKWISE DIRECTION FROM POSITION 2, SENSITIVE SWITCH MUST OPERATE 6° OR MORE FROM POSITION 1.

ELECTRICAL REQUIREMENTS:

WAFER SWITCH: 150 MILLIAMPERES AT 200 VDC, MAXIMUM.
SENSITIVE SWITCH: 2 AMPERES AT 115 VAC.

MECHANICAL REQUIREMENTS:

INSULATION: LAMINATED PHENOLICS SHALL BE PANELYTE 784 AS SUPPLIED BY ST. REGIS PAPER CO., PANELYTE DIV., RICHMOND, IND., OR EQUAL. MOLDED PHENOLICS SHALL BE IN ACCORDANCE WITH SPEC. MIL-M-14, GRADE CFG OR BETTER.
ROTOR BLADES: COIN SILVER ALLOY, NON-SHORTING TYPE
CLIPS: SPRING SILVER ALLOY, WITH WATER-DIP LACQUER FINISH. CLIPS ON FRONT SIDE BENT, CLIPS ON REAR FLAT.
SWITCH DETENT: BALL OR ROLLER TYPE.
CAM: CAM LUBRICATED IN ACCORDANCE WITH SPEC MIL-G-3278.
MOUNTING HARDWARE: MOUNTING HARDWARE SHALL NOT BE SUPPLIED.
METALS: SHALL BE OF A CORROSION-RESISTANT TYPE OR SHALL BE PLATED OR TREATED TO RESIST CORROSION, ACCORDANCE WITH MIL-F-14072.

ENVIRONMENTAL REQUIREMENTS:

SALT SPRAY: ASSEMBLY SHALL BE CAPABLE OF WITHSTANDING A 50 HOUR SALT SPRAY TEST IN ACCORDANCE WITH METHOD 101 OF MIL-STD-202 WITHOUT SHOWING EVIDENCE OF HARMFUL CORROSION.

***TEST REQUIREMENTS AT THE CONTRACTORS COMPANY:**

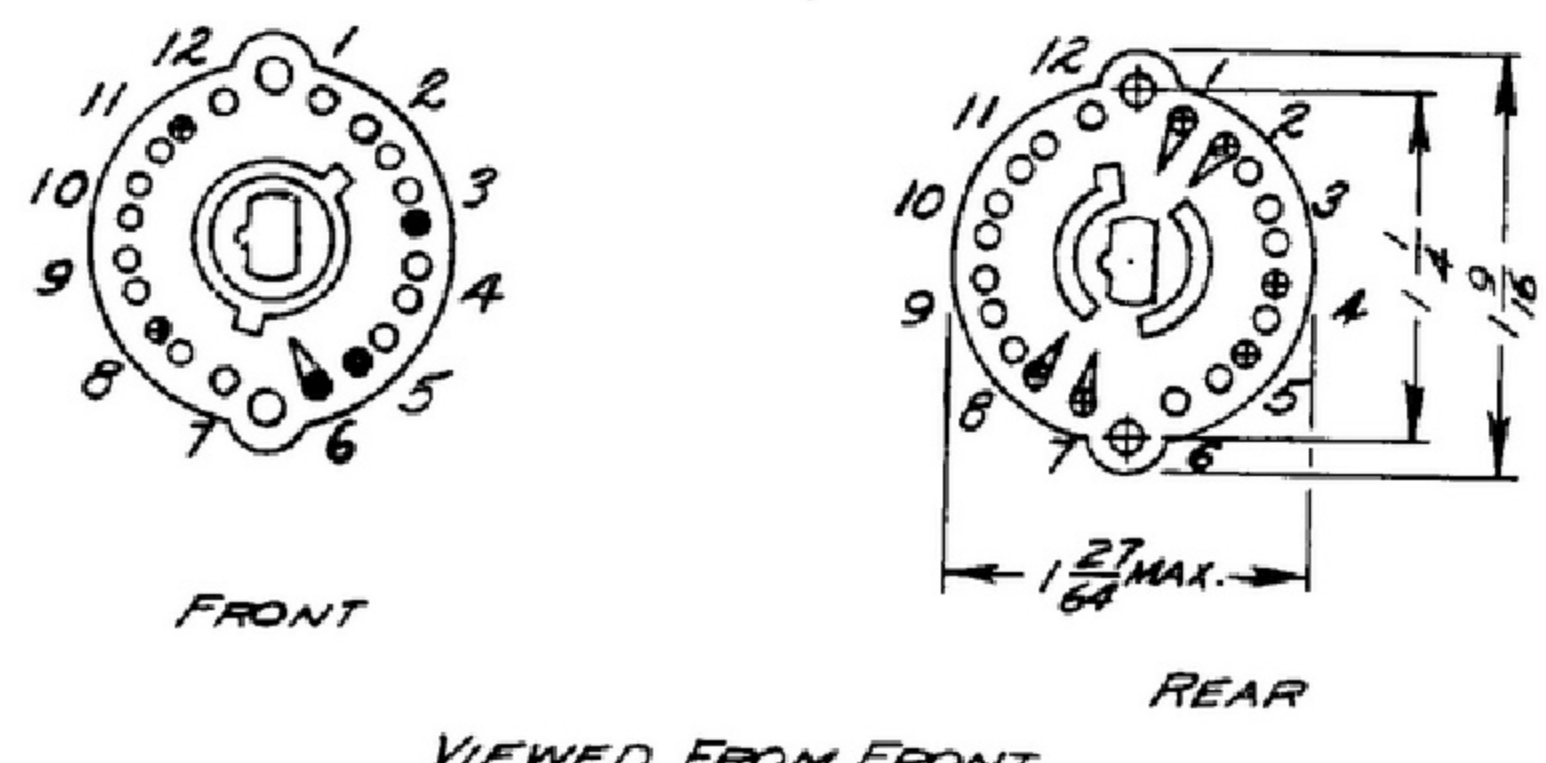
SAMPLE APPROVAL: SAMPLE MUST BE SUBMITTED TO THE CONTRACTORS COMPANY ENGINEERING DEPARTMENT FOR APPROVAL BEFORE SHIPMENT OF PRODUCTION UNITS.

PRODUCTION TESTING: PRODUCTION TESTING SHALL INCLUDE THE FOLLOWING:

- A-VISUAL INSPECTION FOR MECHANICAL REQUIREMENTS AND WORKMANSHIP.
- B-PARAGRAPH 1 OF THIS SPECIFICATION.

SWITCH SIZE: STANDARD

TOTAL NUMBER OF SWITCH SECTIONS: 1
TOTAL NUMBER OF SHIELDS: 0
TYPE OF STOPS: NON-ADJUSTABLE
SHAFT AND BUSHING: NON-SEALED
TYPE OF SHAFT: SINGLE FLATTED
TOTAL ANGLE OF ROTATION: 150°
CONTACT STABILITY (VIBRATION) TEST: NOT REQUIRED.
CONTACT STABILITY (SHOCK) TEST: NOT REQUIRED.
MECHANICAL SHOCK TEST: NOT REQUIRED.
SWITCH SHOWN IN EXTREME COUNTERCLOCKWISE POSITION.



- KEY TO SYMBOLS**
- SHORT CLIP
 - LONG CLIP
 - SHORT CLIP-REVERSED
 - LONG CLIP-REVERSED
 - NO CLIP

* WHEN PART NO APPEARS AS 559 0163 9-3, MILITARY SOURCE INSPECTION IS REQUIRED.

COLLINS PART NO.	ITEM	QTY	RECD	PART NO.	DESCRIPTION	DATE	MATERIAL
LIST OF MATERIAL							
COLLINS PART NO. <i>559 0163 003</i>							
DRAWN <i>R.B.B.</i>			CHECKED <i>[Signature]</i>		APPROVED		
UNLESS OTHERWISE SPECIFIED: DECIMAL DIMENSIONS INCLUDING HOLE SIZES MAY VARY ±.005 FRACTIONAL DIMENSIONS INCLUDING HOLE SIZES MAY VARY ±1/64 MACHINED ANGLES MAY VARY ±1° SHEARED ANGLES MAY VARY ±.20° BROKEN ANGLES MAY VARY ±1° ECCENTRICITY BETWEEN ANY DIAMETERS ON THE SAME CENTERLINE SHALL NOT EXCEED .010 TOTAL INDICATOR READING. ALL DIMENSIONS ARE FINISH DIMENSIONS INCLUDING APPLIED FINISH AND ARE GIVEN IN INCHES.			14214-PH-51-93		SIGNAL CORPS		
558 0466 004 / SM-D-24913A SCDL-218775			REVIEWED <i>PME</i>		SWITCH-ROTARY WAFER		
COLLINS NO. QTY NEXT ASSY USED ON			APPROVED <i>HLV</i>				
APPLICATION			DATE <i>13 JAN '56</i>		SCALE <i>1/1</i>		
					DEPARTMENT OF THE ARMY SIGNAL CORPS ENGINEERING LABORATORIES FORT MONMOUTH NEW JERSEY		
					SM-C-249223		