

EQUIP. TYPE *R390A/URR* EXP. NO.

601 334 9425, 26, 27, 28, 31, 33, 41, 43 00

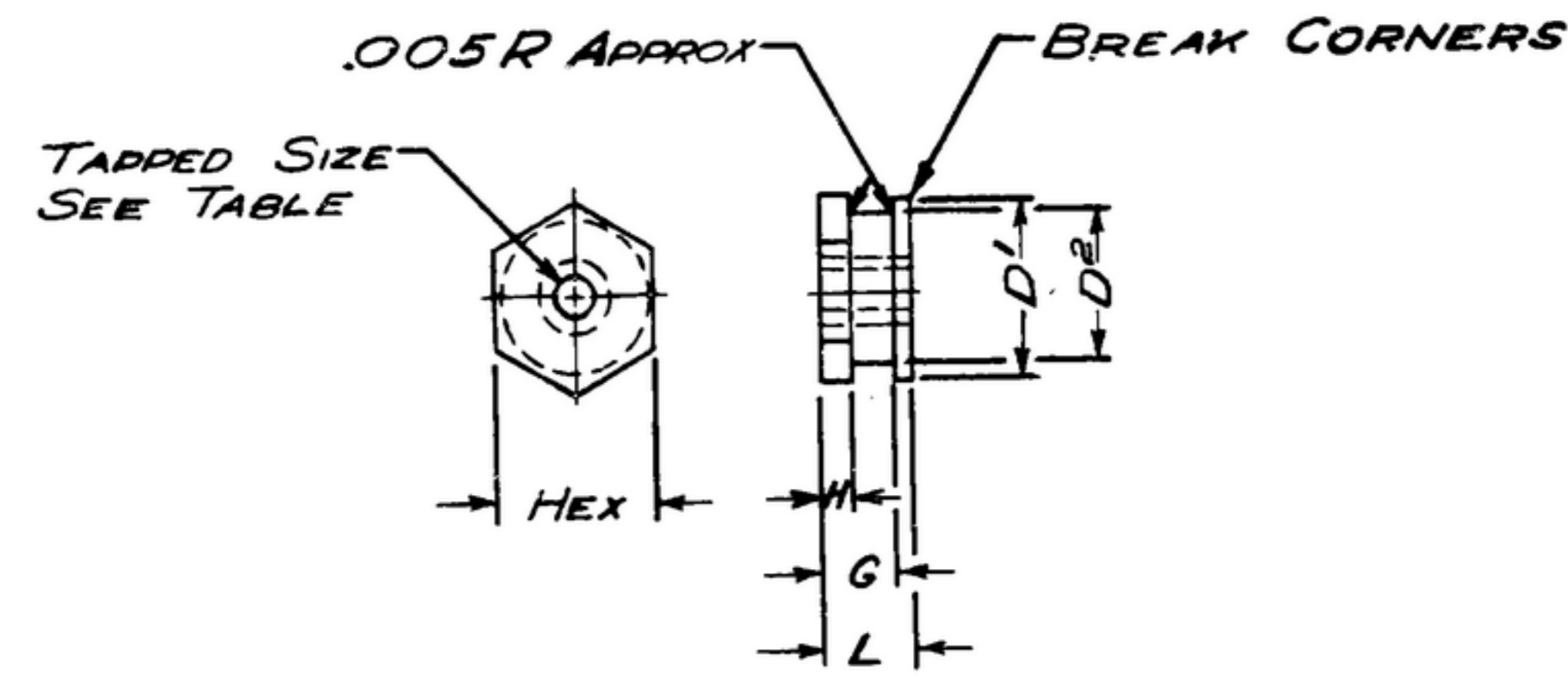
NOTICE: WHEN GOVERNMENT DRAWINGS, SPECIFICATIONS, OR OTHER DATA ARE USED FOR ANY PURPOSE OTHER THAN IN CONNECTION WITH A SPECIFICALLY RELATED GOVERNMENT PROCUREMENT OPERATION, THE UNITED STATES GOVERNMENT THEREBY INCURS NO RESPONSIBILITY FOR ANY OBLIGATION WHATSOEVER, AND THE FACT THAT THE GOVERNMENT HAS FORMULATED, PROVIDED, OR IN ANY WAY SUPPLIED THE SAID DRAWINGS, SPECIFICATIONS, OR OTHER DATA IS NOT TO BE REGARDED BY REPLY, CONTRACT OR OTHERWISE AS IN ANY MANNER LICENSING THE HOLDER OR ANY OTHER PERSON OR ORGANIZATION, OR CONFERRING ANY RIGHTS OR PERMISSIONS TO MANUFACTURE, USE, OR SELL ANY PATENTED INVENTION THAT MAY IN ANY WAY BE RELATED THERETO.

THIS DOCUMENT HAS BEEN PURCHASED BY THE GOVERNMENT AND MAY BE REPRODUCED AND USED IN CONNECTION WITH ANY GOVERNMENT PROCUREMENT OR MAINTENANCE OPERATION.

* FOR INFORMATION ONLY. CONTRACTOR MAY AT HIS OPTION DEVIATE FROM THESE PROCESS DETAILS.

* SWE APPROVAL
SYN #R100-42-7

REVISIONS			
SYM	DESCRIPTION	DATE	APPROVAL
A ₁	A ₁ - ADDED FINISH NOTE	19 OCT 59	4-1428-PC-59-A1-B1 REV'D. PME
B ₁	B ₁ ADDED DETAIL - 9 THRU - 19.	4 JUN 64	15285-PP-63 REV'D. EC-2



COLLINS PART NUMBER	DASH NO	TAPPED SIZE	HEX	DIM L	DIM H	DIM G	DIA "D1" ±.000	DIA "D2" ±.004	*SWE PART NO.
559 0254 003	SM-C-283166-1	4-40 NC-2B	1/4	.250	.022	.054	.201	.172	572827-2
559 0255 003		26-32 NC-2B	1/4	.070	.022	.054	.201	.172	572827-3
559 0256 003		36-32 NC-2B	1/4	.093	.030	.074	.201	.172	572827-4
559 0257 003		46-32 NC-2B	1/4	.125	.030	.074	.201	.172	572827-5
559 0258 003		58-32 NC-2B	5/16	.093	.030	.074	.263	.234	572827-8
559 0259 003		68-32 NC-2B	5/16	.187	.030	.074	.263	.234	572827-10
559 0260 003		74-40 NC-2B	1/4	.125	.030	.074	.201	.172	572827-18
559 0261 003		84-40 NC-2B	1/4	.070	.022	.054	.201	.172	572827-20

(B₁)

DETAIL	TAPPED "S"	HEX	DIM. L	DIM. H	DIM. G	DIA. "D1" ±.000	DIA. "D2" ±.004	MTG. HOLE DIA. ±.001
SM-C-283166-9	4-40NC-2B	1/4"	.223	.156"	.201"	.201"	.172"	.203"
-10	6-32NC-2B	1/4"	.219"	.022"	.054"	.201"	.172"	.203"
-11	6-32NC-2B	1/4"	.254"	.030"	.074"	.201"	.172"	.203"
-12	8-32NC-2B	5/16"	.125"	.030"	.074"	.263"	.234"	.265"
-13	8-32NC-2B	5/16"	.281"	.218"	.262"	.263"	.234"	.265"
-14	10-32NF-2B	5/16"	.093"	.030"	.074"	.263"	.234"	.265"
-15	10-32NF-2B	5/16"	.125"	.030"	.074"	.263"	.234"	.265"
-16	10-32NF-2B	5/16"	.187"	.030"	.074"	.263"	.234"	.265"
-17	1/4-20UNC-2B	7/16"	.187"	.032"	.074"	.384"	.341"	.386"
-18	1/4-20UNC-2B	7/16"	.250"	.032"	.074"	.384"	.341"	.386"
-19	4-40NC-2B	1/4"	.093"	.030"	.074"	.201	.172"	.203"

NOTES:
1. PART MAY BE SUPPLIED BY INLAND AUTOMATIC INC., OMAHA, NEBR., OR EQUAL, PROVIDING IT MEETS THE FOLLOWING REQUIREMENTS AND DIMENSIONS SHOWN.

MATERIAL: STAINLESS STEEL TYPE 303.
ALL BURRS MUST BE REMOVED FROM THREADS. INTERNAL CHAMFERS CREATED BY COUNTERSINKING TO REMOVE BURRS FROM THREADS MUST BE KEPT TO A MINIMUM ON ALL SIZES OF NUTS. MINIMUM ALLOWABLE FULL-USEABLE THREADS ARE AS FOLLOWS: 2 FULL THREADS ON ALL THIN NUTS EXCEPT SM-C-283166-2 (559 0255 003), WHICH MAY HAVE 1-1/2 FULL THREADS. ALL PARTS SMALL PROVIDE MAXIMUM THREAD LENGTH ENGAGEMENT COMMENSURATE WITH THE NEED FOR REMOVAL OF BURRS FROM THREADS.

(A₁) FINISH: E 300 PER MIL-F-14072

COLLINS PART NO.	ITEM	REQD	PART NO.	DESCRIPTION	DATE	MATL SPEC	
SM-C-14497	SM-B-145018		558 0356 004	4	SM-B-249006		
SM-C-144729	SM-C-145020		558 0485 003	38	SM-C-249133		
SM-C-144731	SM-C-145026	SC-DL-144500	558 0469 002	1	SM-B-249117		
SM-B-144743	SM-C-144082		558 0479 003	8	SM-C-249127		
SM-B-144753	SM-D-144078		558 0478 003	8	SM-C-249126		
SM-C-144589	SM-C-144199		558 0331 004	7	SM-D-248988		
SM-B-144596	SM-C-144254		558 0375 003	6	SM-C-248966		
SM-B-144767	SM-D-144459		558 0481 003	4	SM-C-249129		
SM-C-144858	SM-B-143527		558 0480 003	4	SM-C-249128		
SM-C-144985	SM-C-143537		558 0490 004	15	SM-D-249198		
SM-B-144960	SM-D-143622		558 0358 003	2	SM-C-249009		
SM-D-144969	SC-DL-144300	SM-C-143593	SC-DL-143280	558 0393 003	8	SM-C-249043	SC-DL-248775
NEXT ASSY USED ON	NEXT ASSY USED ON	COLLINS NO.	QTY	NEXT ASSY USED ON	USED ON		
APPLICATION	APPLICATION	APPLICATION					

DRAWN NUGEN	CHECKED <i>[Signature]</i>	APPROVED	COLLINS-RADIO-66 CEDAR-RAPIDS-10WA 14214-PH-51-93	DEPARTMENT OF THE ARMY SIGNAL CORPS ENGINEERING LABORATORIES FORT MONMOUTH NEW JERSEY
UNLESS OTHERWISE SPECIFIED: DECIMAL DIMENSIONS INCLUDING HOLE SIZES MAY VARY ±.005 FRACTIONAL DIMENSIONS INCLUDING HOLE SIZES MAY VARY ±1/64 MACHINED ANGLES MAY VARY ±1° SHEARED ANGLES MAY VARY ±.25° BROKEN ANGLES MAY VARY ±1° E-CENTRICITY BETWEEN ANY DIAMETERS ON THE SAME CENTERLINE SHALL NOT EXCEED .010 TOTAL INDICATOR READING. ALL DIMENSIONS ARE FINISH DIMENSIONS INCLUDING APPLIED FINISH AND ARE GIVEN IN INCHES.			REVIEWED PME	NUT-INSERT, CAPTIVE
DATE: 9 JAN 56			APPROVED HLY PME	
SCALE			SM-C-283166	

WHEN REFERRING TO THIS DRAWING STATE DRAWING NO., APPLICABLE ISSUE SYMBOL, IF ANY, AND DATE.