

Equip. Type R390A/URR Exp. No.

Doc. 372-1089-00

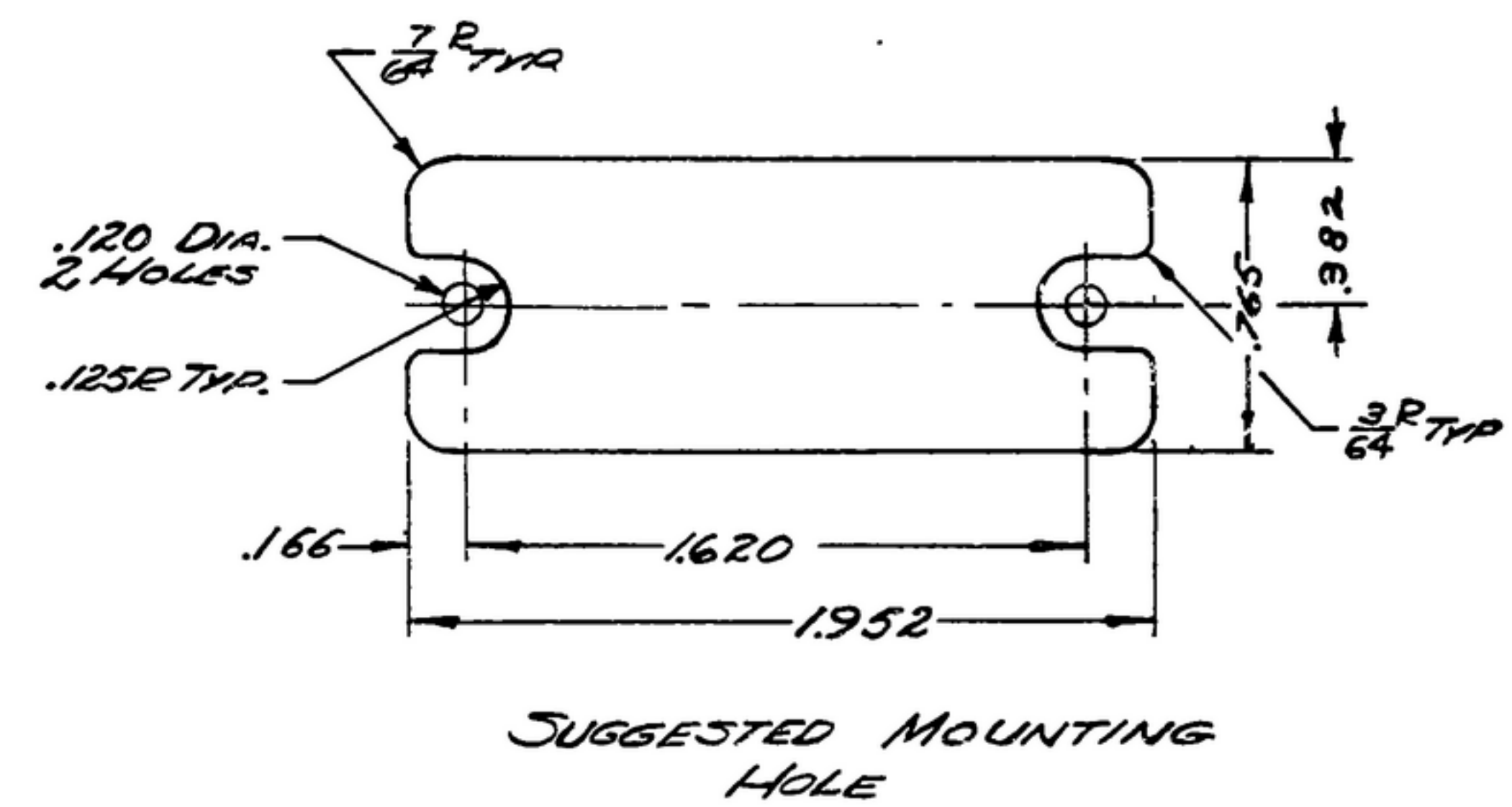
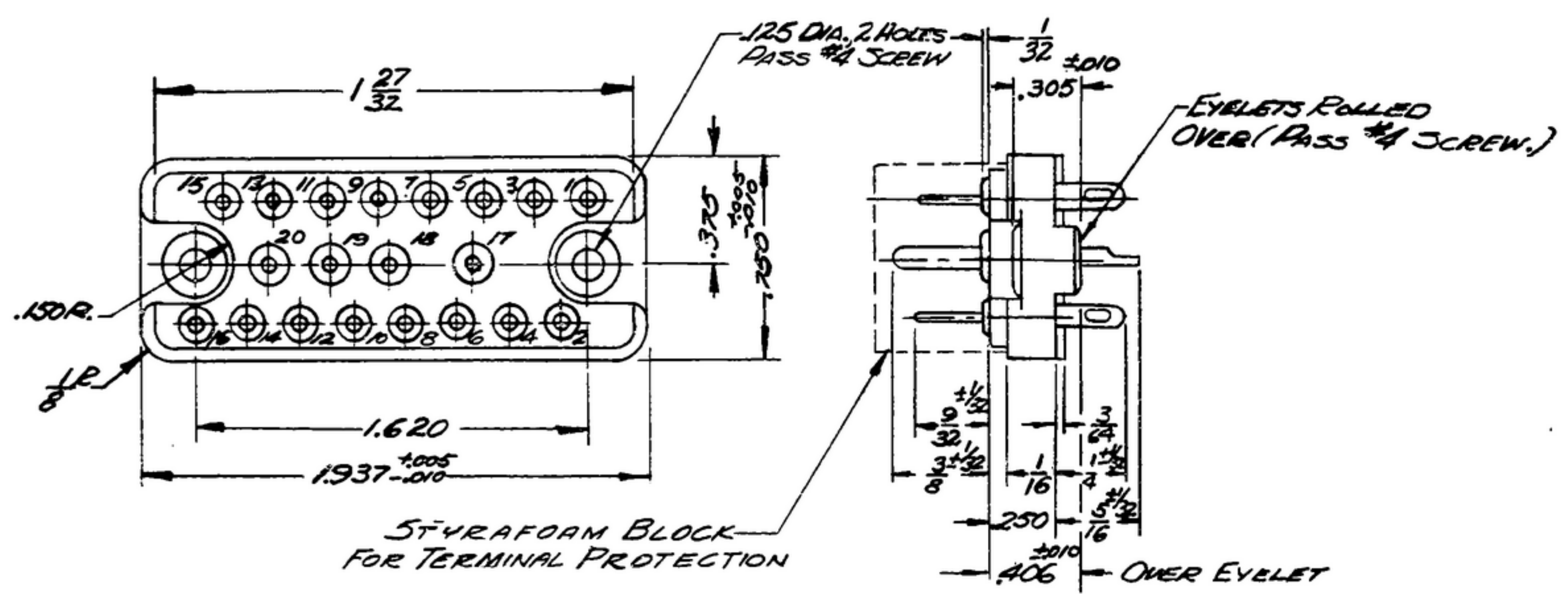
NOTICE: WHEN GOVERNMENT DRAWINGS, SPECIFICATIONS, OR OTHER DATA ARE USED FOR ANY PURPOSE OTHER THAN IN CONNECTION WITH A SPECIFICALLY RELATED GOVERNMENT PURCHASE OPERATION, THE UNITED STATES GOVERNMENT THEREBY ASSUMES NO RESPONSIBILITY FOR ANY OMISSIONS, ERRORS, OR THE FACT THAT THE INFORMATION MAY BE OBSOLETE, FURNISHED, OR IN ANY WAY INCLUDES THE DATA DRAWINGS, SPECIFICATIONS, OR OTHER DATA IS NOT TO BE REGARDED BY REPLACEMENT OR OTHERWISE AS IN ANY MANNER LICENSES THE HOLDER OR ANY OTHER PERSON OR CORPORATION, OR CONFERS ANY RIGHTS OR PERMISSION TO MANUFACTURE, USE, OR SELL ANY PATENTED INVENTION THAT MAY IN ANY WAY BE RELATED THERETO.

THIS DOCUMENT HAS BEEN PURCHASED BY THE GOVERNMENT AND MAY BE REPRODUCED AND USED IN CONNECTION WITH ANY GOVERNMENT PURCHASE OR MAINTENANCE OPERATION.

\*FOR INFORMATION ONLY. CONTRACTOR MAY AT HIS OPTION DEVIATE FROM THESE PROCESS DETAILS.

\*SILE APPROVAL  
SYM-FR1004B-6

REVISIONS			
SYM	DESCRIPTION	DATE	APPROVAL
A <sub>2</sub>	A, ADDED NOTE 2 A <sub>2</sub> MIL-M-14 WAS MIL-P-14	15 OCT 59	42428-PC-39 PME
B	(1) "WITH GOLD FLASH" WAS "OR M310 OVER M351"	31 OCT 61	42428-PC-39 PME



- NOTES:**
- PART MAY BE #126-806-1001, AS SUPPLIED BY AMERICAN PHENOLIC CORP., CHICAGO, ILL., OR EQUAL, PROVIDING IT MEETS THE FOLLOWING REQUIREMENTS AND DIMENSIONS SHOWN.
    - DESCRIPTION:** 20 CONTACT PANEL OR CABLE MOUNTING MALE CONNECTOR.
    - VOLTAGE RATING:** 500 VOLTS RMS MAXIMUM AT SEA LEVEL.
    - CURRENT RATING:** 4 LARGE CONTACTS (.093 DIA) - 15 AMPERES  
16 SMALL CONTACTS (.040 DIA) - 5 AMPERES
    - INSULATION:** PHENOLIC TYPE MFE OR BETTER IN ACCORDANCE WITH MILITARY SPECIFICATION MIL-M-14.
    - TERMINALS:** 4, .093 DIAMETER BRASS CONTACTS  
16, .040 DIAMETER BRASS CONTACTS
    - TERMINAL PLATING:** M351 PER MIL-F-14072 WITH GOLD FLASH.
    - EYELETS:** BRASS, FINISH: M352, PER SPEC MIL-F-14072.
    - MARKINGS:** TERMINAL NUMBER SHALL BE MOLDED ON FRONT AND REAR OF CASTING AS SHOWN AND SHALL BE IN ACCORDANCE WITH SPEC MIL-M-13231.
    - MOUNTING DATA:** LIQUID STAKING PS RECOMMENDED FOR MOUNTING SCREWS RATHER THAN LOCKWASHERS.
    - EYELET MAY BE OMITTED IF 0.406 AND 0.305 DIMENSIONS ARE MAINTAINED.**
    - APPROXIMATE HOLE IN CONTACTS:** SMALL CONTACTS - .062 X .125  
LARGE CONTACTS - .085 X .125
    - PINS SHALL BE MOLDED INTO THE BODY OF THE CONNECTOR.**
    - CONTACT TAILS:** FINISH: M317 OR M310 PER SPEC MIL-F-14072.
  - CONNECTOR SHALL MEET THE APPLICABLE REQUIREMENTS OF MIL-C-8384 EXCEPT WHERE AMENDED BY THIS SPECIFICATION

WHEN PART NO. APPEARS AS 559 8389 9-2, MILITARY SOURCE INSPECTION IS REQUIRED.

ROLLING PART NO.	ITEM	QTY	PART NO.	DESCRIPTION	UNIT	UNIT QTY
LIST OF MATERIAL						
ROLLING PART NO. 559 0289 002						

SM-B-188455	SM-B-144454	SM-D-143841	SM-D-143792	SM-D-144593	SM-D-248591	SM-D-248775
SC-DL-143280	SC-DL-144500	SC-DL-248775				
558 034 004	1					
COLLING NO.	QTY	NEXT ASSY	USED ON	APPLICATION		
				DRAWN R.E.B. CHECKED [Signature] APPROVED [Signature]		
UNLESS OTHERWISE SPECIFIED: DECIMAL DIMENSIONS INCLUDING HOLE SIZES MAY VARY ±.005 FRACTIONAL DIMENSIONS INCLUDING HOLE SIZES MAY VARY ±1/64 MACHINING ANGLES MAY VARY ±1° BREAKED ANGLES MAY VARY ±.25° BROKEN ANGLES MAY VARY ±1° ECCENTRICITY BETWEEN ANY DIAMETERS ON THE SAME CENTERLINE SHALL NOT EXCEED .010 TOTAL INDICATOR READING. ALL DIMENSIONS ARE FINISH DIMENSIONS INCLUDING APPLIED FINISH AND ARE GIVEN IN INCHES.				GOLLING-RADIO CO. CEDAR RAPIDS, IOWA 14214-PH-51-93		DEPARTMENT OF THE ARMY SIGNAL CORPS ENGINEERING LABORATORIES FORT MONMOUTH NEW JERSEY
				SIGNAL CORPS		CONNECTOR-PLUG
				REVIEWED PME		
				APPROVED HLY PME		
				DATE 16 JAN 56	SCALE 2/1	SM-C-283188

WHEN REFERRING TO THIS DRAWING STATE DRAWING NO., APPLICABLE ISSUE SYMBOL, IF ANY, AND DATE