

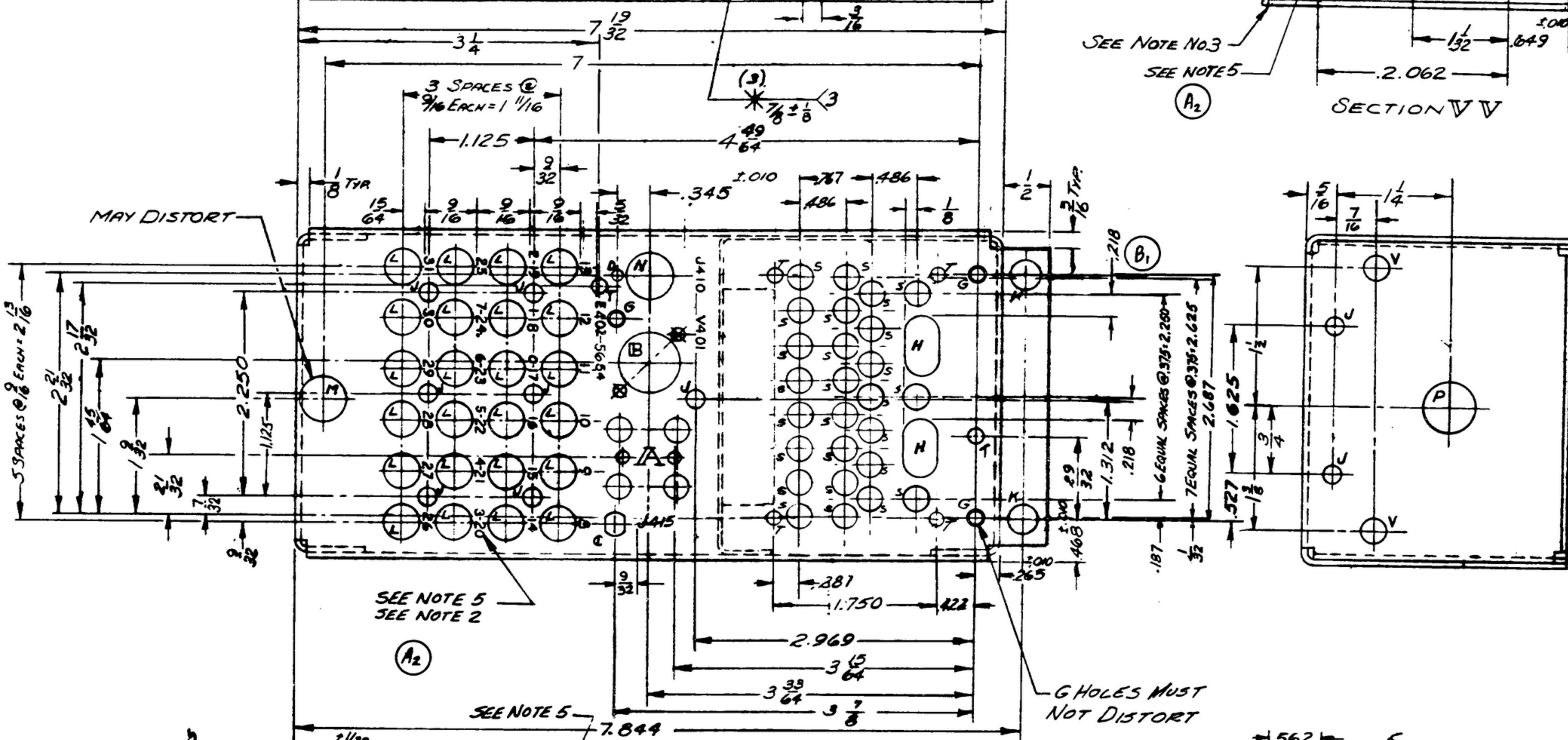
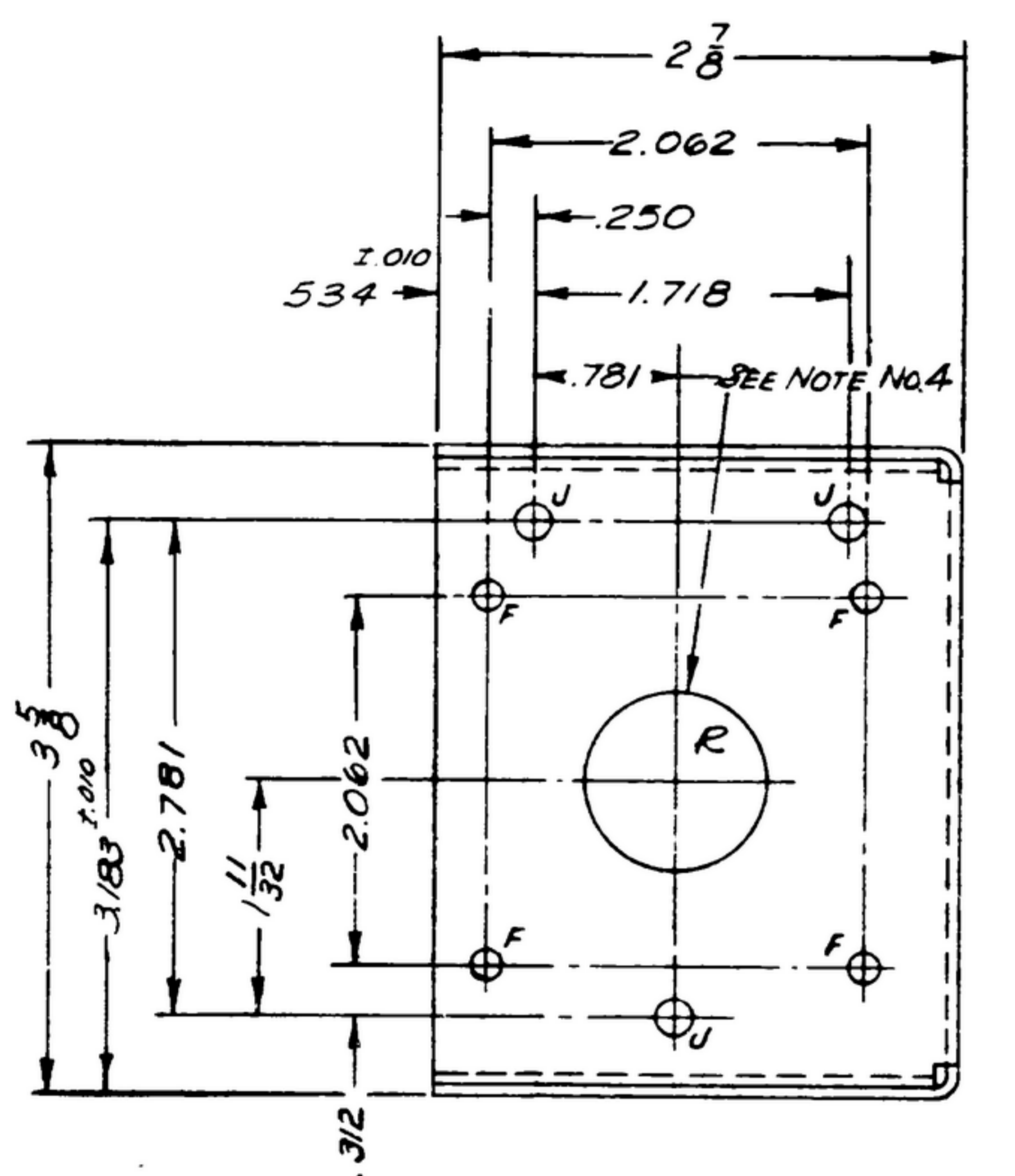
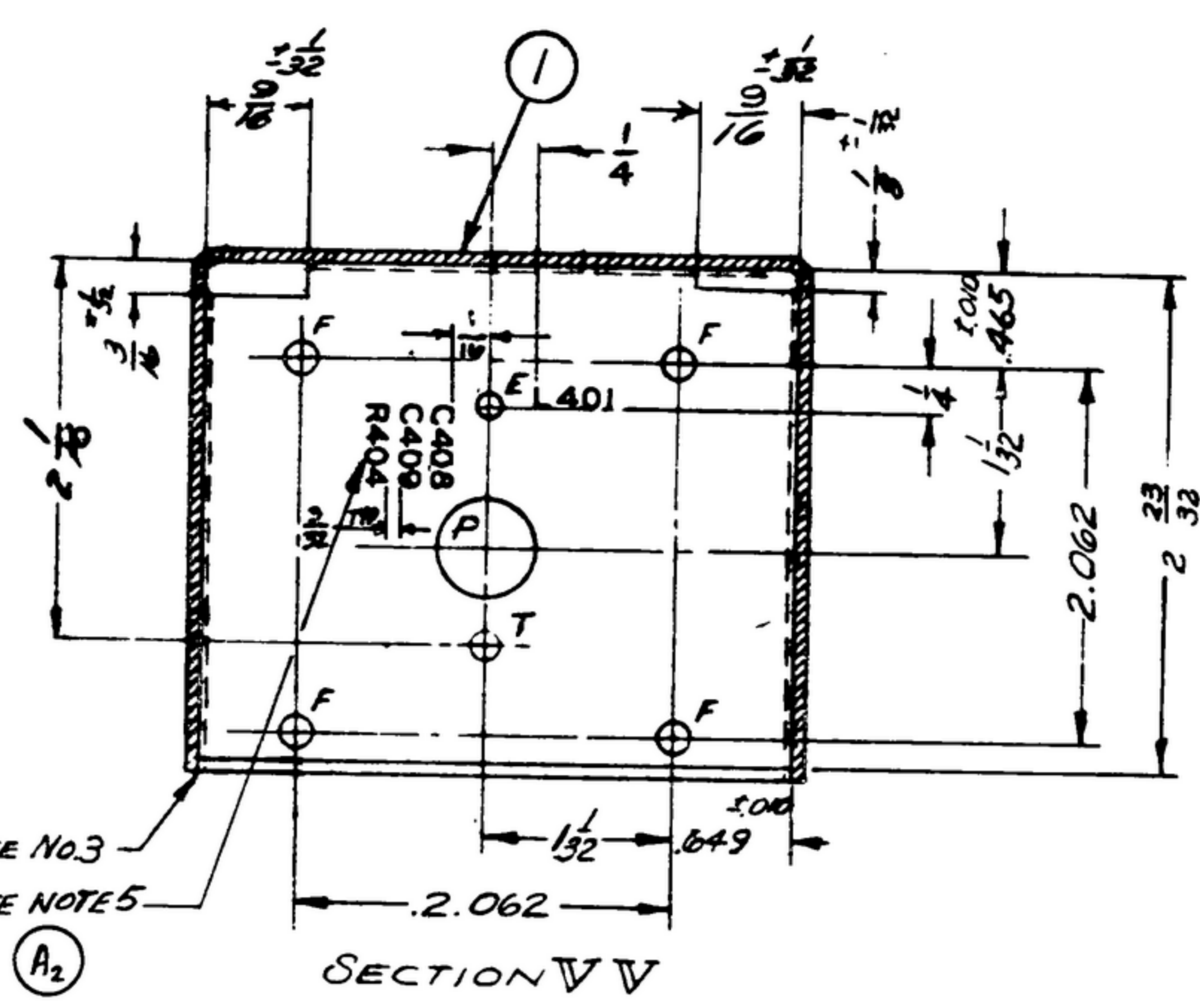
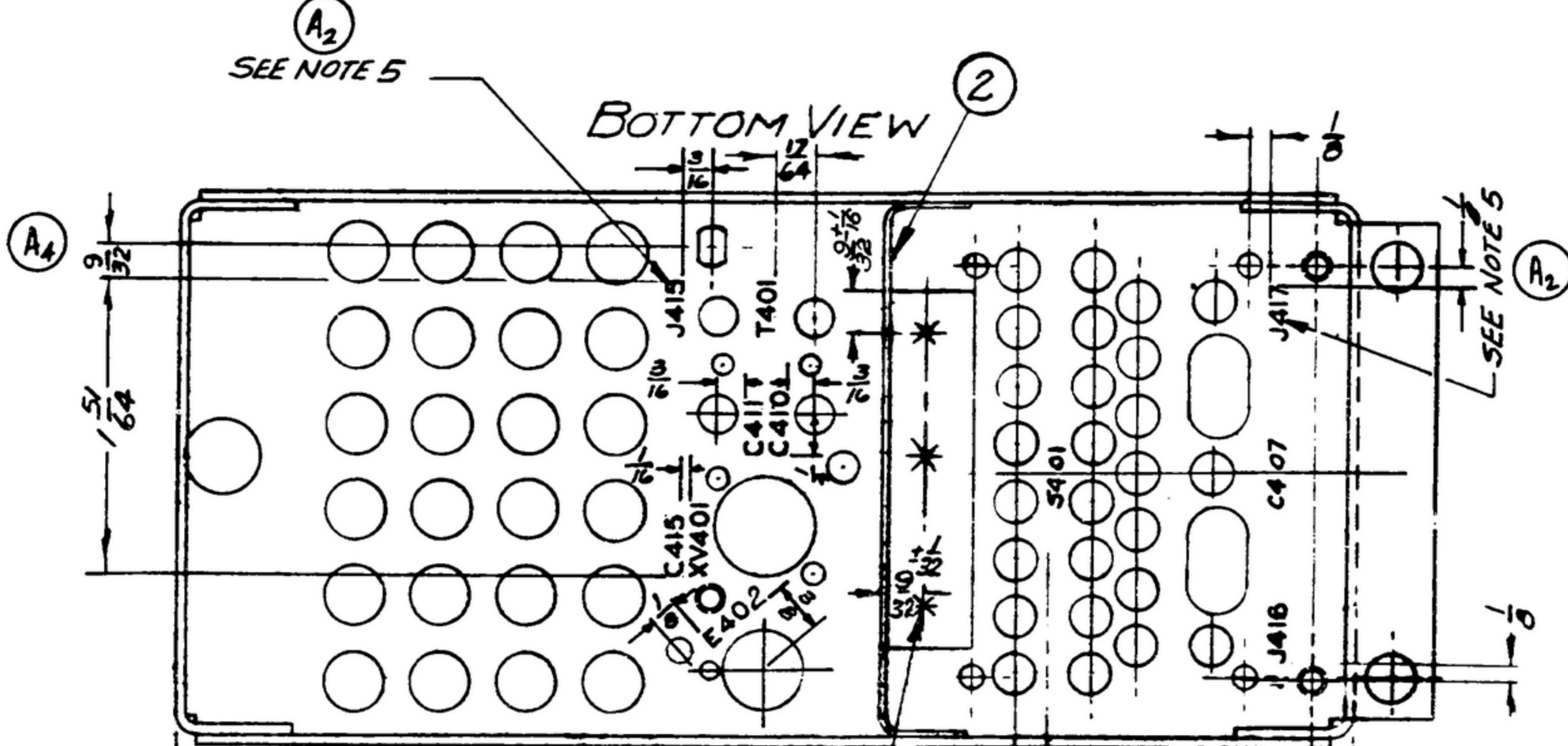
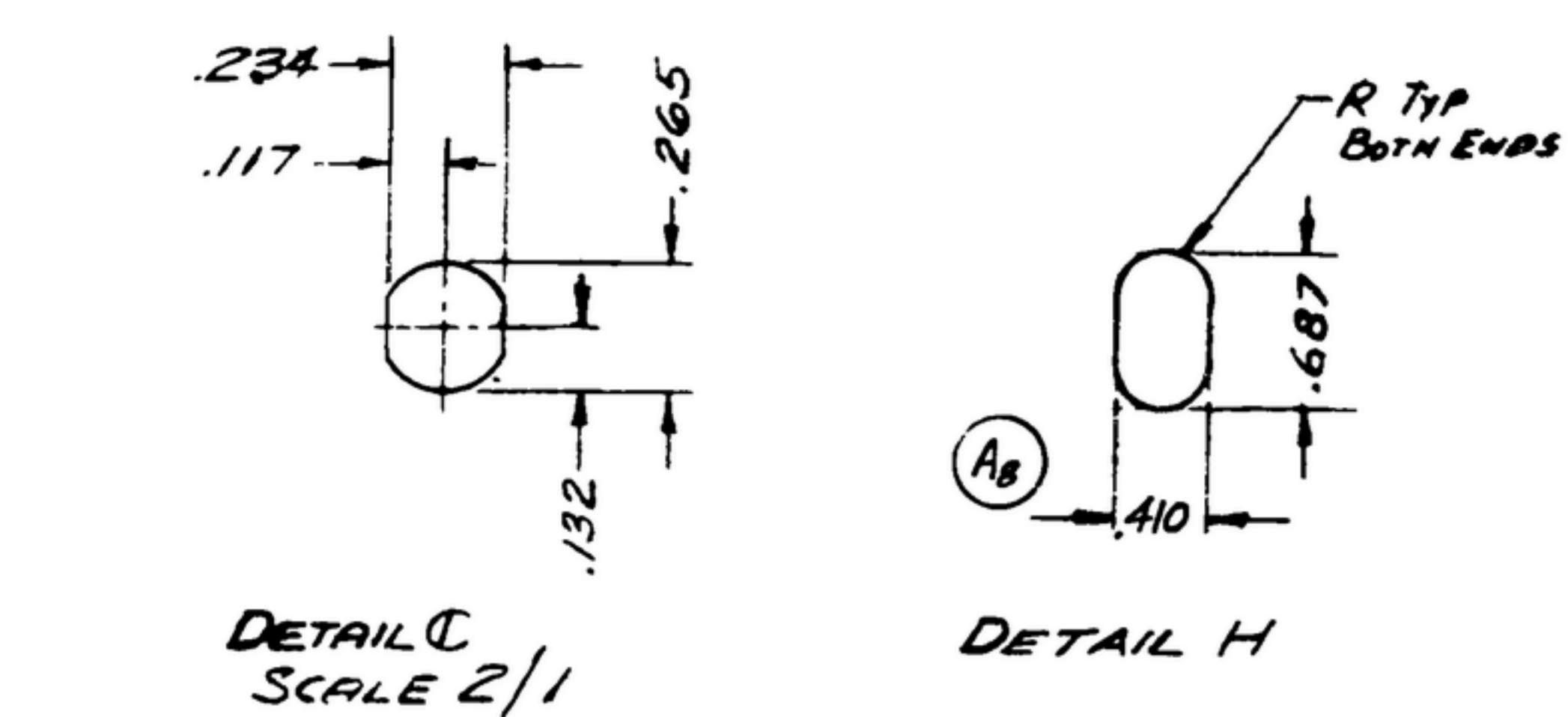
NOTE: WHEN GOVERNMENT DRAWINGS, SPECIFICATIONS, OR OTHER DATA ARE USED FOR ANY PURPOSE OTHER THAN IN CONNECTION WITH A SPECIFICALLY RELATED GOVERNMENT PROCUREMENT OPERATION, THE UNITED STATES GOVERNMENT TAKES NO RESPONSIBILITY FOR ANY OMISSION, MISSTATEMENT, OR ANY WAY THAT THE INFORMATION MAY BE FORMULATED, TRANSMITTED, OR IN ANY WAY RELAYED. THE DATA RELAYING, SPECIFICATIONS, OR OTHER DATA IS NOT TO BE DECLASSIFIED BY ANY AGENCY OF THE FEDERAL GOVERNMENT UNLESS THE INFORMATION IS FIRST DETERMINED TO BE UNCLASSIFIED BY THE NATIONAL ARCHIVES AND RECORDS ADMINISTRATION.

THIS DOCUMENT HAS BEEN PURCHASED BY THE GOVERNMENT AND MAY BE REPRODUCED AND USED IN CONNECTION WITH ANY GOVERNMENT PROCUREMENT OR DAILY OPERATION.

\*FOR INFORMATION ONLY. CONTRACTOR MAY AT HIS OPTION DEVIATE FROM THESE PROCESS DETAILS.

When Part No. Appears As 658-0394 S-4 MILITARY SOURCE INSPECTION IS REQUIRED.

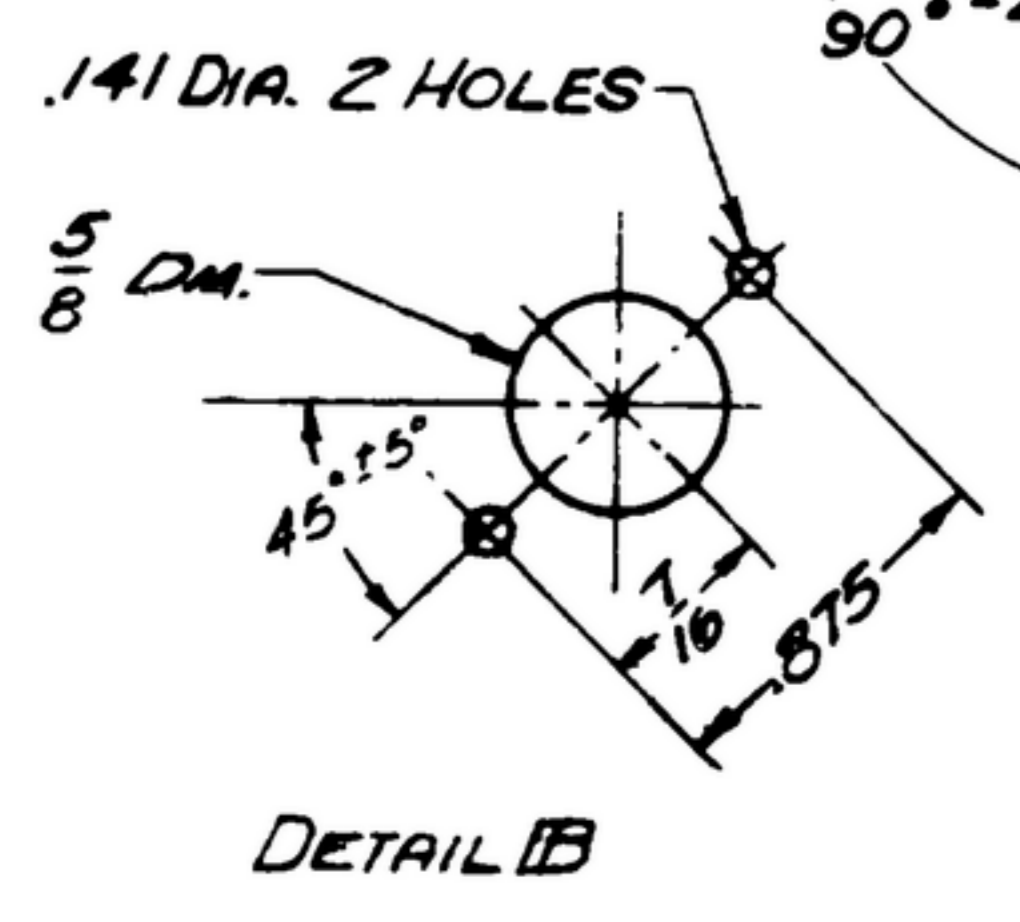
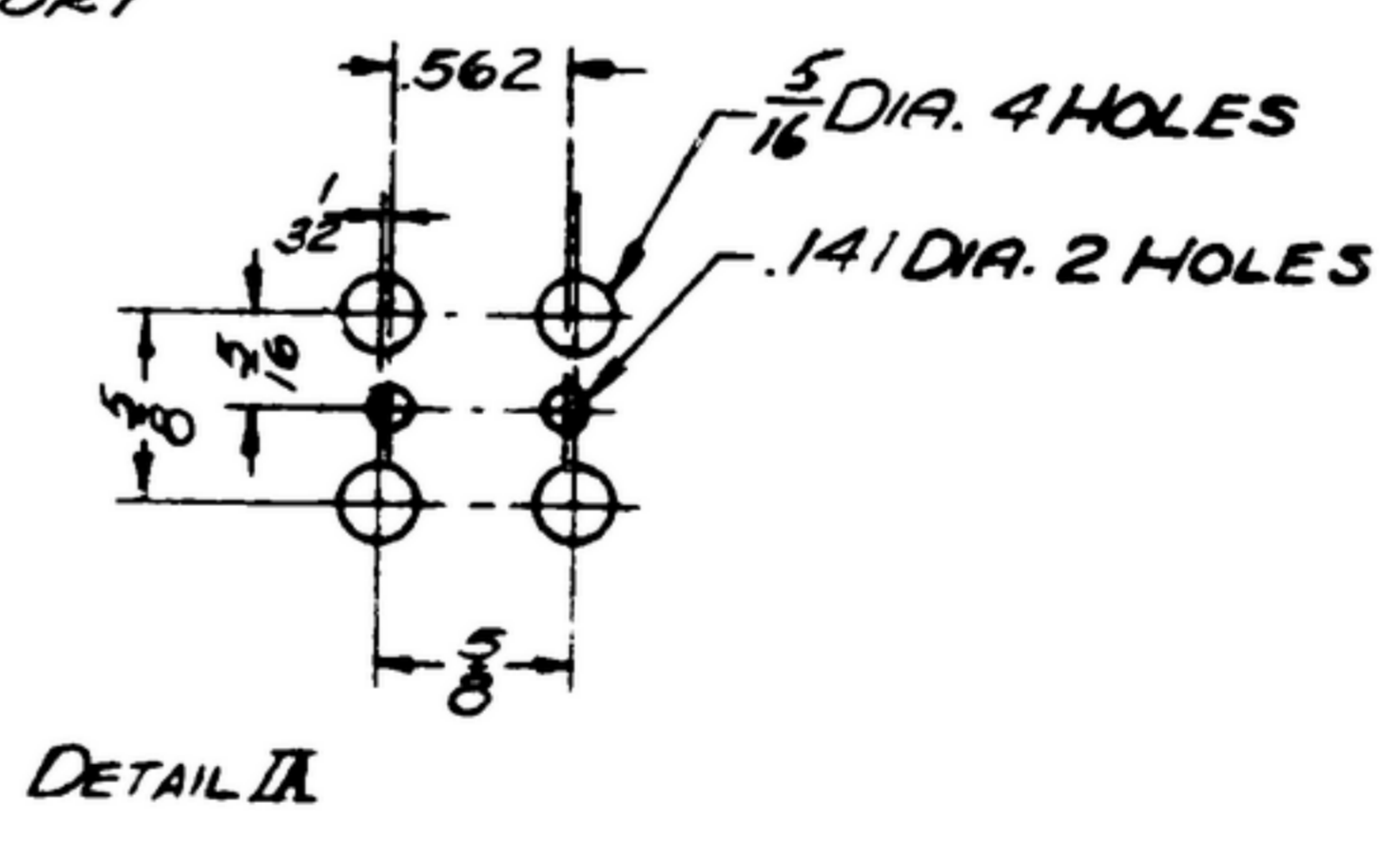
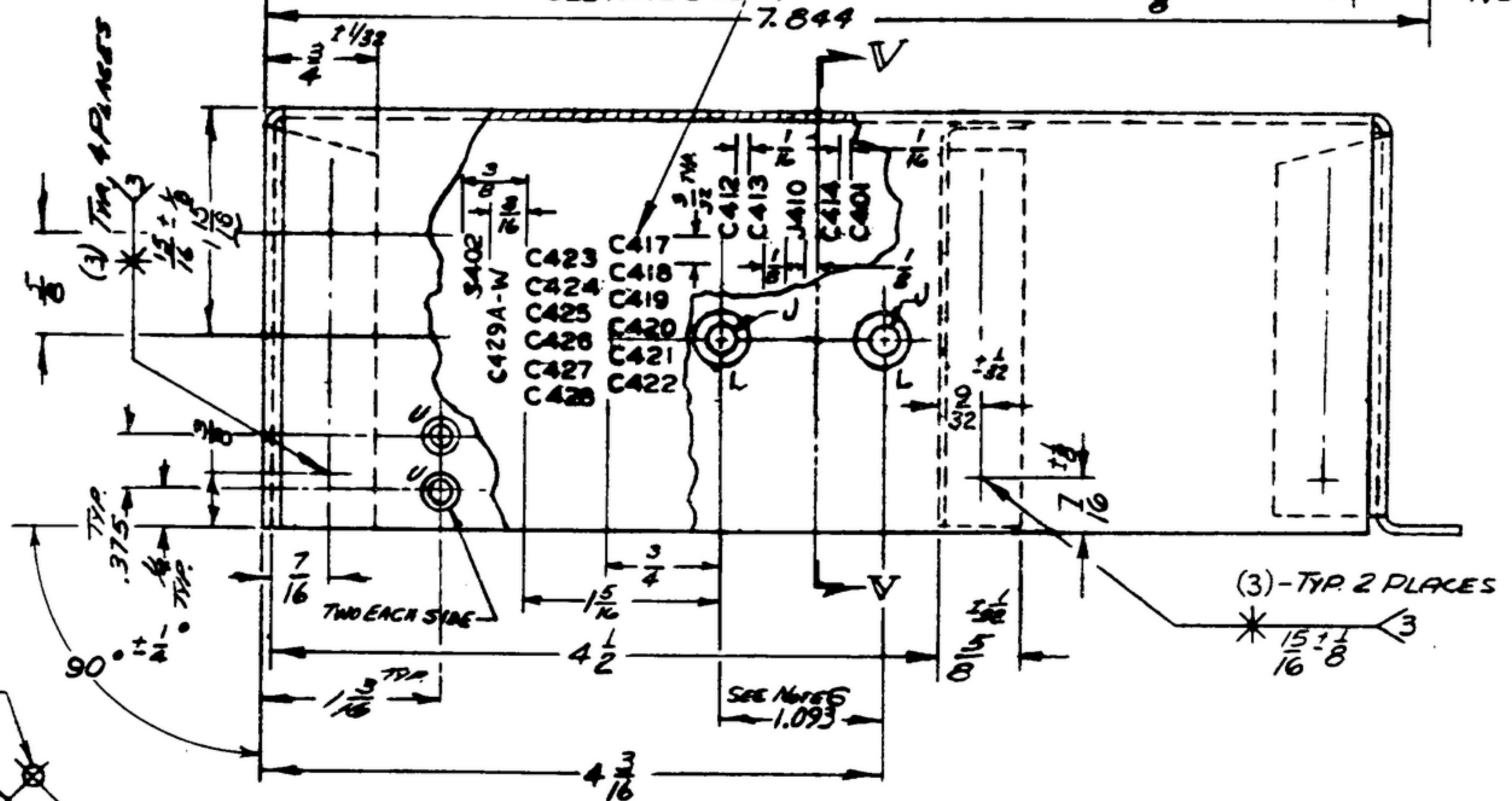
REVISIONS			
BY	DESCRIPTION	DATE	APPROVAL
A11	A. REVISED NOTES & DIMS. A2-DELETED SILK SCREEN NOTATION; A3- WMS .125 A4- WMS 2.75, 752 WMS 752 A5- DIMENSIONAL CALL SCREENING ON VIEW A6- WMS 525 A7- ADDED "V" HOLES A8- WMS .375 A9- DELETED ITEM 3707. A10- WAS SPEC MIL-W-6860 A11- ADDED SHEET 2.	3 NOV 59	REV'D. PME
B1	B1- 6 EQUAL SPACES @ .375- 2.250 WAS 6 EQUAL SPACES @ .375- 2.625	5 APR 60	REV'D. PME



ALUMINUM ALLOY 5052, TEMPER H32, PER SPEC. QQ-A-318.  
FINISH: E513 PER SPEC. MIL-F-14072.  
\*GOLLINS-580-0056-00.

- NOTES:
1. ALL RELIEF & BEND RADII 3/64 MAX.
  2. WELDING SYMBOLS IN ACCORDANCE WITH JAN-STD-19, SPOT WELDING SHALL BE IN ACCORDANCE WITH SPEC MIL-W-6858
  3. RIB ITEM(2) TO BE FLUSH TO 1/32 ABOVE BOTTOM OF CHASSIS
  4. HOLE LOCATION TOLERANCE APPLIES TO "J" HOLE, "R" MAY VARY ± 1/64
  5. ALL CHARACTERS TO BE 3/32 HIGH GOTHIC TYPE PER SPEC. MIL-N-13231 GROUP II. COLOR TO BE BLACK, COLOR CHIP #27038 PER FED STD 595. MARKINGS TO BE CENTRALLY LOCATED ± 1/32 UNLESS OTHERWISE SHOWN. COVER DESIGNATIONS WITH 1 COAT OF VARNISH PER MIL-V-173, TYPE II.
  6. TOLERANCE APPLIES TO (J) HOLES, (L) HOLES OPPOSITE SIDE MAY VARY ± 1/32.

HOLE	DESCRIPTION	REQD
IR	SEE DETAIL IR	1
IB	SEE DETAIL IB	1
C	SEE DETAIL C	1
D	.109 DIA.	1
E	.136 DIA. ± .005	1
F	.171 DIA.	8
G	171 ± .005 DIA. C SINK @ 82° TO .203	3
H	SEE DETAIL H	2
J	.203 ± .001 DIA.	14
K	3/12 ± .001 DIA.	2
L	3/8 DIA.	26
M	1/2 DIA.	1
N	.515	1
P	9/16 DIA.	2
R	1 DIA.	1
S	250 DIA.	26
T	.140 DIA.	7
U	1/4 DIA. C SINK @ 82° TO .230 DIA.	4
V	1/4 DIA.	2



ITEM	REQD	PART NO.	DESCRIPTION	MATL.	MATL. SPEC.
7	1	SM-B-248816			
6	1	SM-B-248815			
5	1	SM-B-248814			
4	1	SM-B-248813			
3	REF.	SM-B-248812	SILK SCREEN XTAL OSC		
2	1	SM-D-249044-2	RIB .040 THICK		
1	1	SM-D-249044-1	CHASSIS .064 THICK		

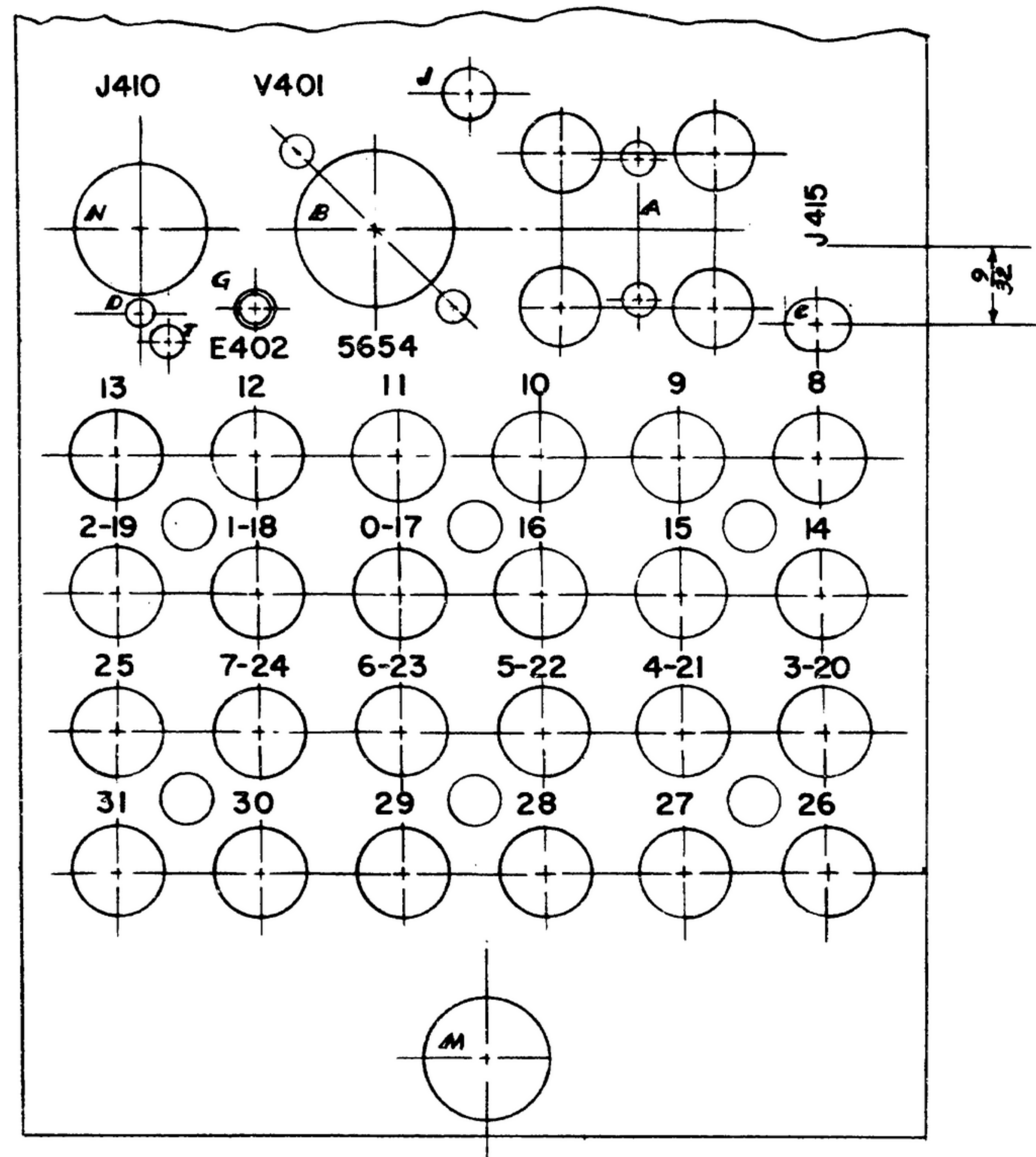
DRAWN <b>NUGEN</b>	CHECKED <b>Rm</b>	APPROVED <b>[Signature]</b>	-GOLLINS-580-0056-00- 14214-PH-51-93 SIGNAL CORPS REVIEWED <b>PME</b> APPROVED <b>HLV</b> DATE <b>29 DEC 55</b>	DEPARTMENT OF THE ARMY SIGNAL CORPS ENGINEERING LABORATORIES FORT MONMOUTH NEW JERSEY 5M-D-249044 SHEET 1 OF 2
APPLICATION 658-0394-003 - SM-C-249043 SEC-DE-248775		LIST OF MATERIAL -GOLLINS-PART-NO-558-0394-004		

NOTICE: THESE DIMENSIONS ARE APPROXIMATE. THE CONTRACTOR SHALL BE RESPONSIBLE FOR THE ACCURACY OF THE DIMENSIONS SHOWN ON THIS DRAWING. THE CONTRACTOR SHALL BE RESPONSIBLE FOR THE ACCURACY OF THE DIMENSIONS SHOWN ON THIS DRAWING. THE CONTRACTOR SHALL BE RESPONSIBLE FOR THE ACCURACY OF THE DIMENSIONS SHOWN ON THIS DRAWING.

THIS DRAWING IS THE PROPERTY OF THE SIGNAL CORPS ENGINEERING LABORATORIES. IT IS LOANED TO YOU FOR YOUR INFORMATION ONLY. IT IS NOT TO BE REPRODUCED OR COPIED IN ANY MANNER WITHOUT THE WRITTEN PERMISSION OF THE SIGNAL CORPS ENGINEERING LABORATORIES.

NOTE: \*FOR INFORMATION ONLY. CONTRACTOR MAY AT HIS OPTION DEVIATE FROM THESE PROCESS DETAILS

*SWE APPROVAL		REVISIONS		
SYM	DESCRIPTION	DATE	APPROVAL	
<del>PR10042</del>				
A <sub>II</sub>	ADDED SHEET 2	13 NOV 59	PMF	4242B-PC59
B <sub>I</sub>	B <sub>I</sub> - SEE SHEET *1 FOR REVISIONS	5 APRIL 60	PMF	4242B-PC59



REQD	PART NO.	DESCRIPTION	MATL	MATL SPEC
LIST OF MATERIAL				

UNLESS OTHERWISE SPECIFIED		COLLINS RADIO CO.		<b>CHASSIS XTAL OSC. ASSY</b>	DEPARTMENT OF THE ARMY SIGNAL CORPS ENGINEERING LABORATORIES FORT MONMOUTH NEW JERSEY
DIMENSIONS ARE IN INCHES		CEDAR RAPIDS, IOWA			
TOLERANCES ON		14214-PH-51-93		SM-D-249044 SHEET 2	
FRACTIONS DECIMALS ANGLES		SIGNAL CORPS			
± 1/64 ± .005 ± 1°		REVIEWED PMF			
Drawn By: <i>RUGEN</i>		APPROVED HLY			
Checked By: <i>PC</i>		DATE 29 DEC 55		SCALE 2/1	
Next Assy Used On		DATE 29 DEC 55			
APPLICATION		Est. Approval		SCALE 2/1	