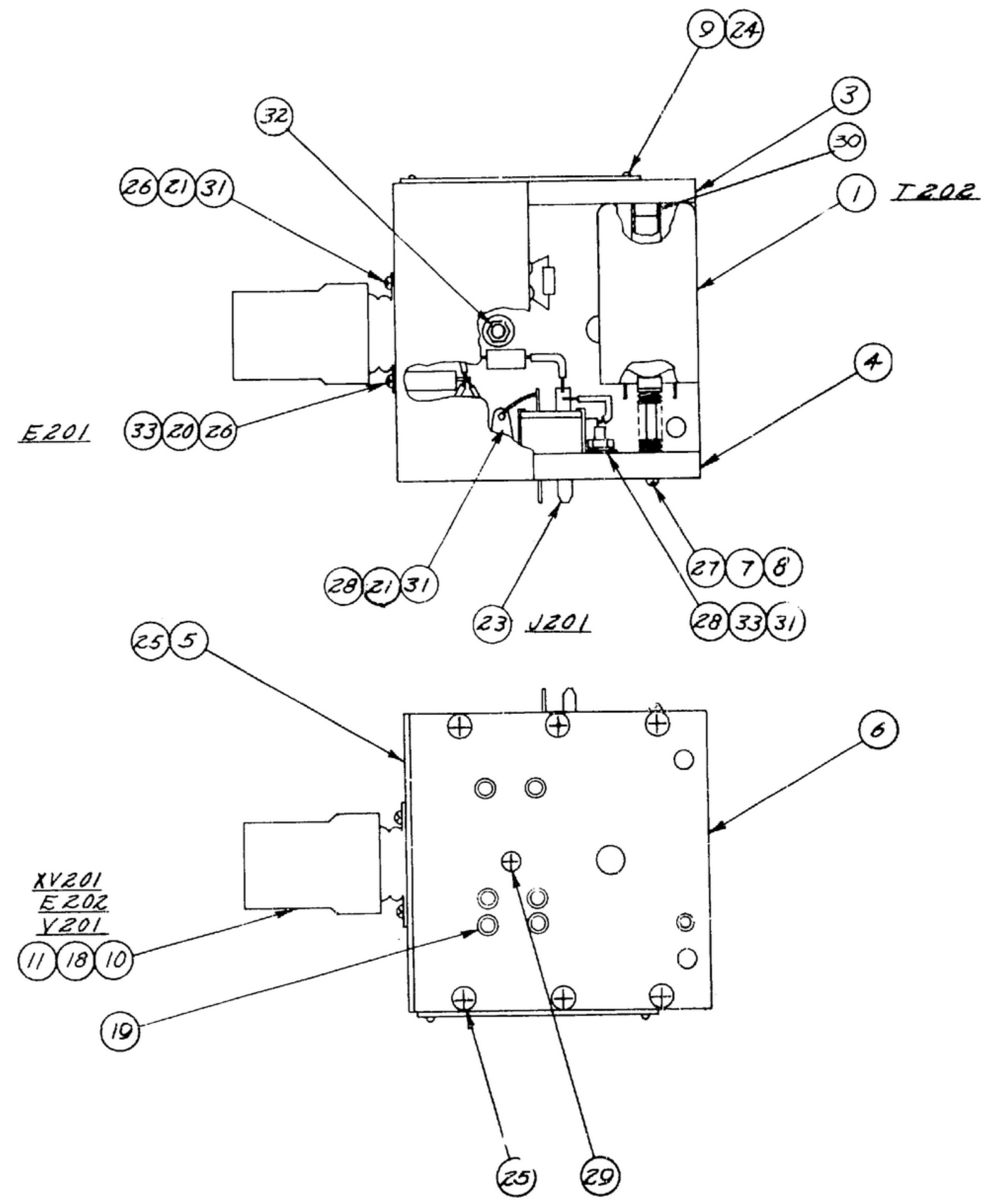
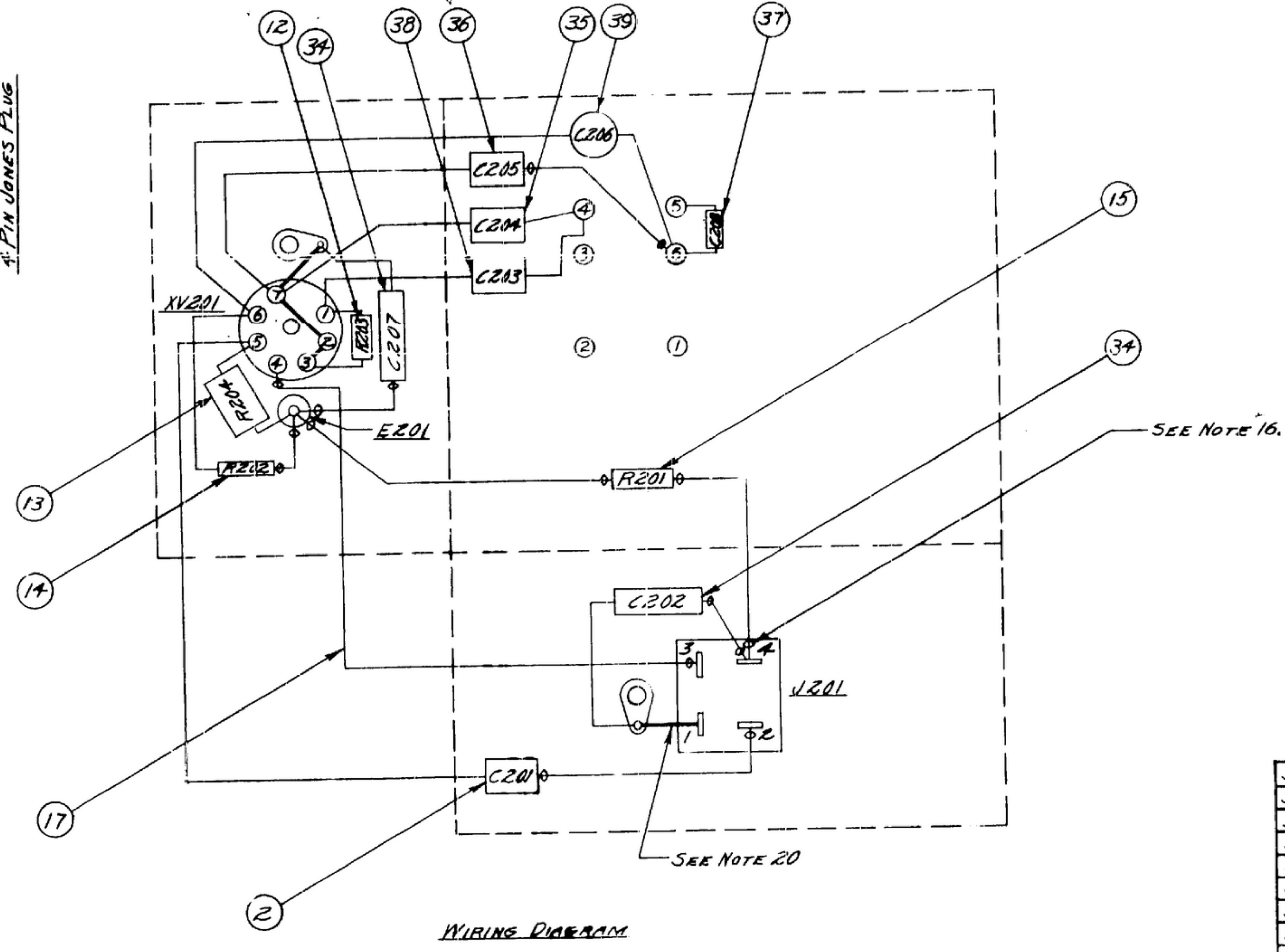
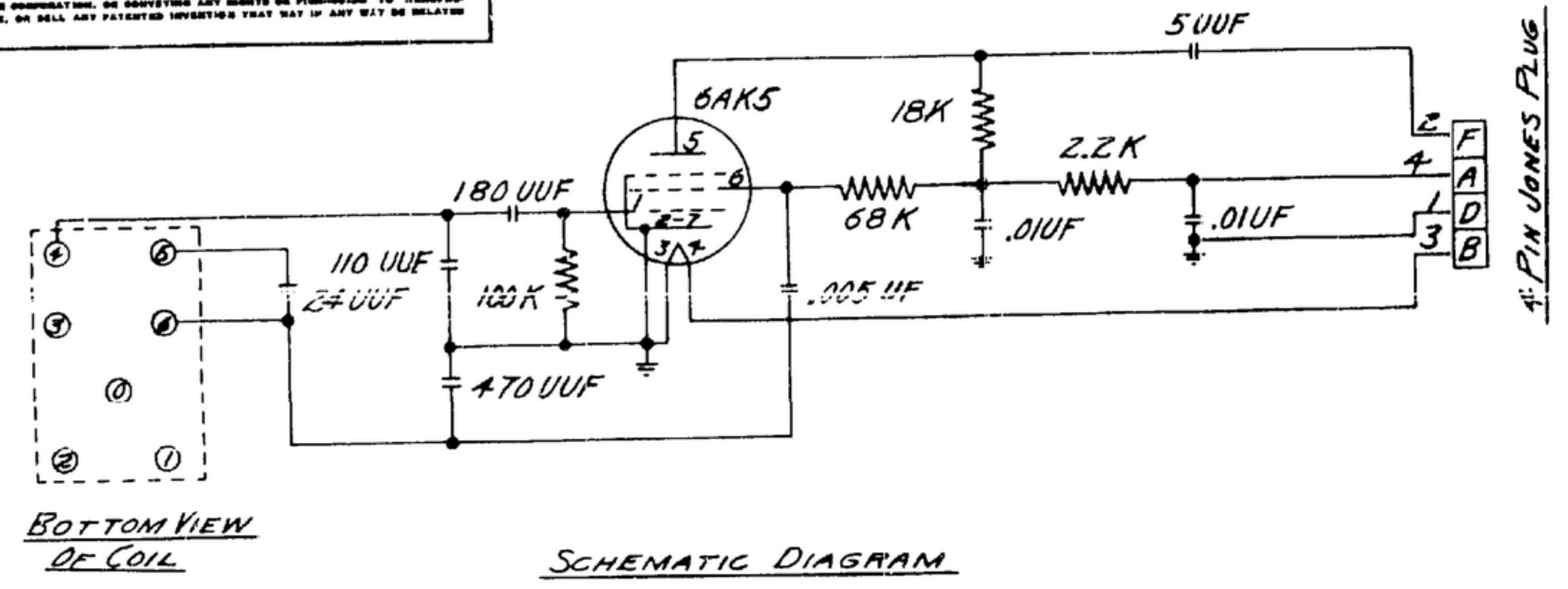


NOTICE: WHEN GOVERNMENT DRAWINGS, SPECIFICATIONS, OR OTHER DATA ARE USED FOR ANY PURPOSE OTHER THAN IN CONNECTION WITH A SPECIFIC BUYER'S ORDER, THE BUYER ASSUMES ALL RESPONSIBILITY FOR ANY INADEQUACIES, OMISSIONS, OR ERRORS IN ANY WAY SUPPLIED FOR THIS DRAWING. SPECIFICATIONS, OR OTHER DATA AS SET BY THE BUYER OR OTHER AUTHORITY ARE NOT TO BE CONSIDERED AS PART OF THIS DRAWING UNLESS THEY ARE SO INDICATED BY THE BUYER OR OTHER AUTHORITY. THE BUYER'S USE OF THIS DRAWING IS LIMITED TO THE PURPOSES AND CONDITIONS SPECIFIED IN THE BUYER'S ORDER. THE BUYER'S USE OF THIS DRAWING FOR ANY OTHER PURPOSE IS AT HIS OWN RISK AND WITHOUT LIABILITY TO THE GOVERNMENT. THE GOVERNMENT ASSUMES NO LIABILITY FOR ANY PATENTED INVENTIONS THAT MAY BE IN ANY WAY RELATED TO THIS DRAWING.

THIS DOCUMENT HAS BEEN PREPARED BY THE CONTRACTOR AND MAY BE SUPERSEDED BY THE GOVERNMENT WITH THE SAME OR OTHER EQUIPMENT OR MODIFICATIONS. THE CONTRACTOR SHALL BE RESPONSIBLE FOR THE CORRECTION OF ANY SUCH CHANGES AND FOR THE MAINTENANCE OF THE ORIGINAL DRAWING.

FOR INFORMATION ONLY. CONTRACTOR MAY AT HIS OPTION DEVIATE FROM THESE PROCESS DETAILS.



- NOTES:
1. WIRE (17) SHALL BE BRN. SAIR - 7/5(7)-22 U1.
  2. SUPPLIED BY GENERAL ELECTRIC CORP., SCHENECTADY, NEW YORK, OR EQUAL.
  3. SUPPLIED BY SEAELECTRO CORP., NEW ROCHELLE, NEW YORK, OR EQUAL.
  4. SUPPLIED BY WHITSO INC., SCHILLER PARK, ILL., OR EQUAL.
  5. SUPPLIED BY PATTON-MACGUYER CO., PROVIDENCE, RHODE ISLAND, OR EQUAL.
  6. SUPPLIED BY BENTLEY HARRIS MFG. CO., CONSHOHOCKE, PENN., OR EQUAL.
  7. SUPPLIED BY HOWARD B. JONES CO., CHICAGO, ILL., OR EQUAL.
  8. SUPPLIED BY PARKER KALON CORP., CLIFTON, N.J., OR EQUAL.
  9. SUPPLIED BY PHEOLL MFG. CO., CHICAGO, ILL., OR EQUAL. (PHILLIPS CROSS RECESSED)
  10. SUPPLIED BY BRISTOL CO., WATERBURY, CONN., OR EQUAL. (6 SPLINE)
  11. SUPPLIED BY CENTRAL SCREW CO., CHICAGO, ILL., OR EQUAL.
  12. SUPPLIED BY INLAND AUTOMATIC INC., OMAHA, NEB. OR EQUAL. (INSERT CAPTIVE)
  13. SUPPLIED BY SHAKENPROOF INC., CHICAGO, ILL., OR EQUAL.
  14. SUPPLIED BY SPRAGUE ELECTRIC CO., NORTH ADAMS, MASS., OR EQUAL.
  15. SUPPLIED BY CORNELL-DUBLIER ELECTRIC CORP., SOUTH PLAINFIELD, N.J., OR EQUAL.
  16. SYMBOL  $\odot$  INDICATES TUBING (22).
  17. ALL SOLDER SHALL BE SN-50 PER QQ-S-571.
  18. COIL (1) IS SUPPLIED IN POSITION SHOWN. WHEN IN USE COIL IS PLUGGED IN SOCKETS (19) & HELD IN PLACE WITH SCREWS (29).
  19. COAT ALL SOLDER CONNECTIONS WITH VARNISH TYPE I PER MIL-V-173.
  20. WIRE (16) IS SHOWN BY A DOUBLE LINE.
  21. SHALL BE TYPE S #22 SOFT ANNEALED TIN COATED.
  22. ALL THREADS SHALL BE PER HANDBOOK H.28.

QTY	DESCRIPTION	MATERIAL	FINISHED SIZE	BY	NOTE
39	1	-24	1DR5D5		
38	1	-23	22R5T18		
37	1	-22	22R5Q24		
36	1	-21	5R5T47		
35	1	-20	22R5T11	MICA	15
34	2	-19	CAPACITOR *67P10394	PAPER	14
33	2	-18	WASHER *4 INT. SHAPE		13
32	1	-17	NUT 4-40 NC-2A X 1/2-30 NC-HEX		12
31	3	-16	NUT 4-40 NC-2BA 7/8 X 1/2 HEX		11
30	1	-15	8-32 NC-2A 1/4 HEAD X 1/4 THK.		10
29	1	-14	4-40 NC-2A 1/2 PAN HEAD		
28	2	-13	4-40 NC-2A 1/2 FLAT HEAD		
27	1	-12	6-32 NC-2A 1/2 PAN HEAD		
26	2	-11	4-40 NC-2A 1/2 BINDER HEAD		
25	10	-10	SCREW 4-40 NC-2A		9
24	2	-9	DRIVE SCREW 1/8 1.058 DIA.	STEEL	8
23	1	-8	CONNECTOR P-3M-1B-M1		7
22	1	-7	TUBING *BH8000 No. 18		6
21	2	-6	LUG *3002		5
20	1	-5	POST *103A-1		4
19	6	-4	SOCKET *SKT-1	TEFLON	3
18	1	-3	TUBE *6AK5		2
17	1	-2	JAN-C-76		1
16	15/100	SM-D-33305-1	WIRE MIL-W-3861	COPPER	21
15	1	RC326F222U			
14	1	RC20BF683K			
13	1	RC20BF183K			
12	1	RC20BF104K	RESISTOR MIL-R-11		
11	1	TS102U	SHIELD		
10	1	TS102P01	SOCKET JAN-5-28		
9	1	SM-C-31958-2	NAME PLATE		
8	1	SM-B-31957	SPRING		
7	1	SM-B-31956	NUT		
6	1	SM-B-31251	PLATE		
5	1	SM-B-31250	TOP		
4	1	SM-B-31249	PLATE		
3	1	SM-B-31248	PLATE		
2	1	SM-C-283226-1	CAPACITOR	MICA	
1	1	SM-D-249087	COIL ASSY		

UNLESS OTHERWISE SPECIFIED DIMENSIONS ARE IN INCHES FRACTIONS DECIMALS ANGLES		COLLINS RADIO CO COLUMBIA AVENUE MURFREESBORO, TENN. 37055		TEST OSC R-390A URR		DEPARTMENT OF THE ARMY SIGNAL CORPS ENGINEERING LABORATORIES	
REVIEWED	SC6687639	DESIGNED	DATE	SM-D-33305	ANT COIL T202	1.0-2.0 MC	SIG C MSP
APPROVED		DATE	4 SEPT 56	SCALE	57292		
APPLICATION		SCALE					