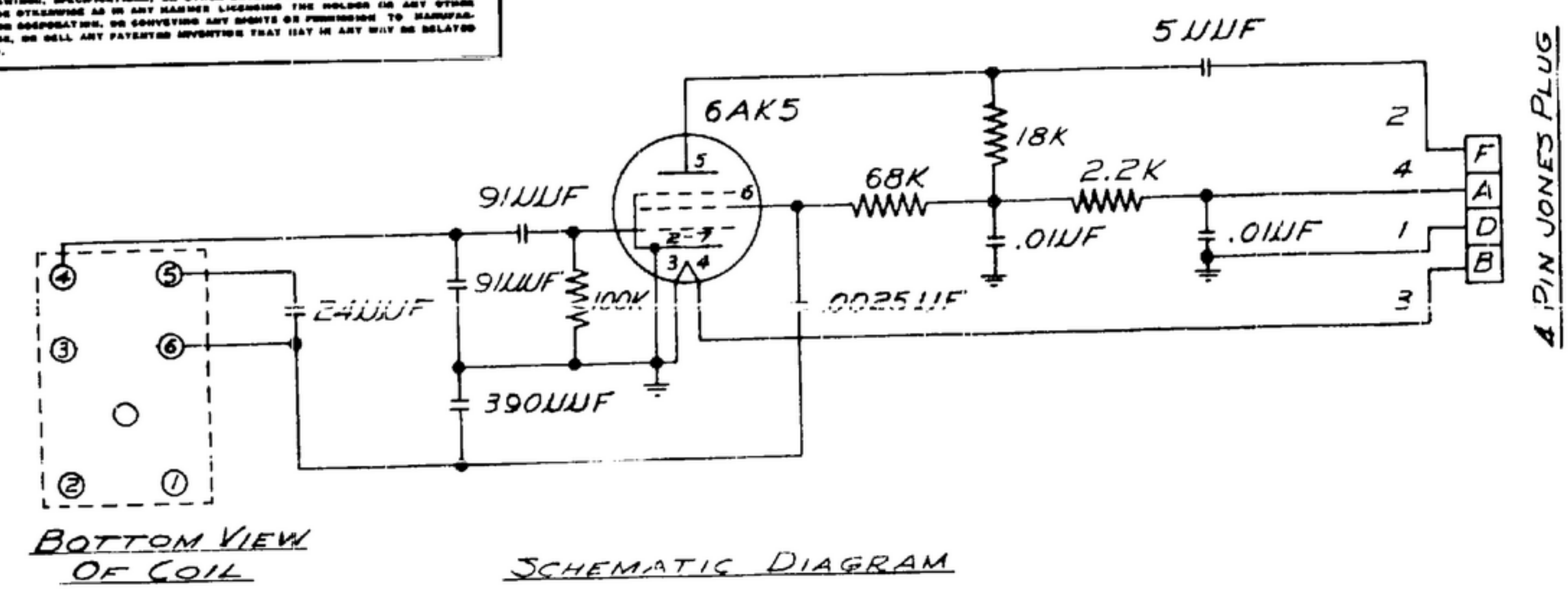


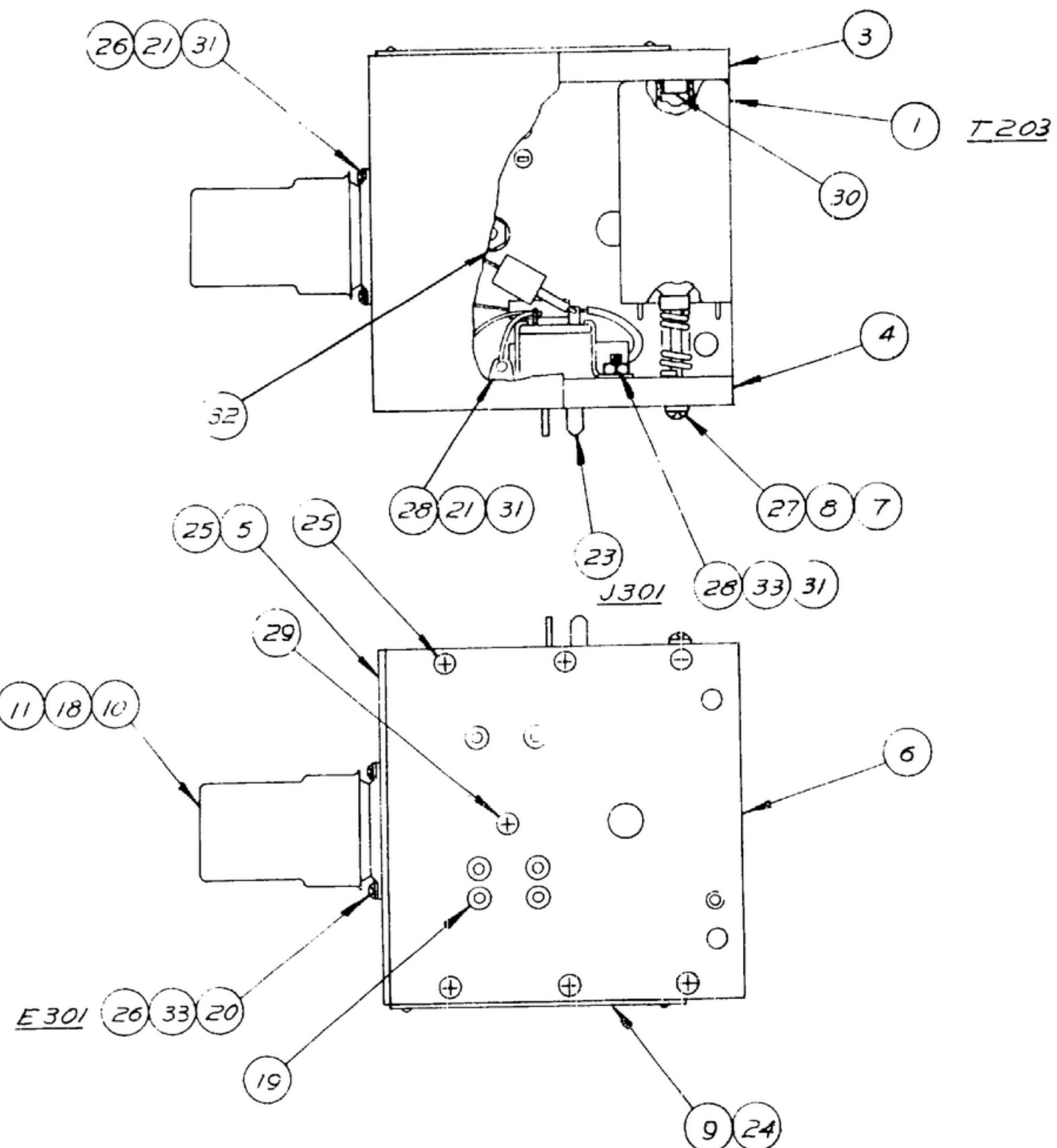
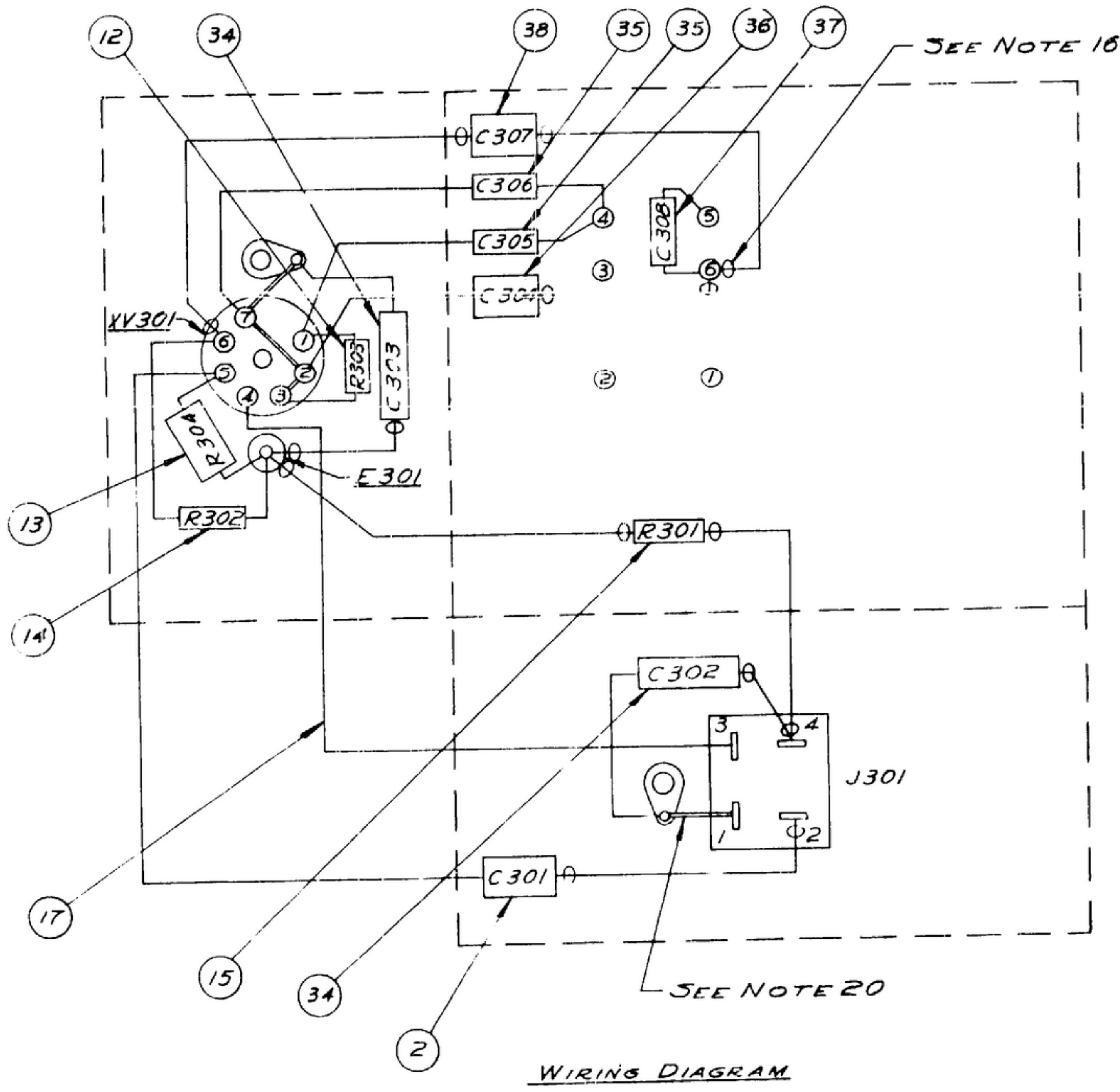
NOTICE: THESE APPROVED DRAWINGS, SPECIFICATIONS, OR OTHER DATA ARE HEREBY MADE PUBLIC PROPERTY OF THE ARMY AND ARE TO BE USED ONLY FOR THE PURPOSES AND LIMITATIONS STATED HEREON. IT IS THE POLICY OF THE ARMY TO MAKE AVAILABLE TO THE PUBLIC THE INFORMATION CONTAINED HEREIN TO THE EXTENT PERMITTED BY LAW. THE ARMY ASSUMES NO LIABILITY FOR ANY DAMAGE TO PERSONS OR PROPERTY, OR FOR ANY OTHER LOSS OR INJURY, ARISING FROM THE USE OF THIS INFORMATION IN ANY MANNER NOT INTENDED BY THE ARMY. THIS DOCUMENT IS THE PROPERTY OF THE ARMY AND IS TO BE RETURNED TO THE ARMY AT THE END OF THE TERM FOR WHICH IT WAS LOANED TO YOU. IF YOU HAVE ANY COMMENTS OR SUGGESTIONS, PLEASE CONTACT THE ARMY AT THE ADDRESS INDICATED BELOW.

THIS DOCUMENT HAS BEEN FORMULATED BY THE UNDERSEAS AND AIR FORCE RESEARCH AND DEVELOPMENT COMMAND AND IS TO BE USED IN CONNECTION WITH ANY EQUIPMENT OR PROGRAM OF RESEARCH OR DEVELOPMENT.

\*FOR INFORMATION ONLY. CONTRACTOR MAY AT HIS OPTION DEVIATE FROM THESE PROCESS DETAILS.



BOTTOM VIEW OF COIL



NOTES

1. SHALL BE BROWN SRIR-3/4 (7)-22UL.
2. SUPPLIED BY GENERAL ELECTRIC CORP., SCHENECTADY, NEW YORK, OR EQUAL.
3. SUPPLIED BY SEAELECTRO CORP., NEW ROCHELLE, NEW YORK, OR EQUAL.
4. SUPPLIED BY WHITSO INC., SHILLER PARK, ILL., OR EQUAL.
5. SUPPLIED BY PATTON-MACGUYER CO., PROVIDENCE, RHODE ISLAND, OR EQUAL.
6. SUPPLIED BY BENTLEY HARRIS MFG. CO., CONSHOCKEN, PENN., OR EQUAL.
7. SUPPLIED BY HOWARD B. JONES CO., CHICAGO, ILL., OR EQUAL.
8. SUPPLIED BY PARKER KALON CORP., CLIFTON, N.J., OR EQUAL.
9. SUPPLIED BY PHEOLL MFG. CO., CHICAGO, ILL., OR EQUAL (PHILLIPS CRUSS PROC.).
10. SUPPLIED BY BRISTOL CO., WATERBURY, CONN., OR EQUAL. (G.3 LINE).
11. SUPPLIED BY CENTRAL SCREW CO., CHICAGO, ILL., OR EQUAL.
12. SUPPLIED BY INLAND AUTOMATIC INC., OMAHA, NEB., OR EQUAL (INSERT ACTIVE).
13. SUPPLIED BY SHAKEPROOF INC., CHICAGO, ILL., OR EQUAL.
14. SUPPLIED BY SPRAGUE ELECTRIC CO., NORTH ADAMS, MASS., OR EQUAL.
15. SUPPLIED BY CORNELL-DUBLIER ELECTRIC CORP., SOUTH PLAINFIELD, N.J., OR EQUAL.
16. SYMBOL  $\varnothing$  INDICATES TUBING (22).
17. ALL SOLDER SHALL BE SN-50 PER QQ-5-571.
18. COIL (1) IS SUPPLIED IN POSITION SHOWN. WHEN IN USE COIL IS PLUGGED IN SOCKETS (19) & HELD IN PLACE WITH SCREW (29).
19. COAT ALL SOLDER CONNECTIONS WITH VARNISH TYPE I PER MIL-V-173.
20. WIRE (16) IS SHOWN BY A DOUBLE LINE.
21. SHALL BE TYPE 2 #22 SOFT ANNEALED TIN COATED.
22. ALL THREADS SHALL BE PER HANDBOOK H28.

QTY	SIZE	PART NO.	DESCRIPTION	DRFL.	FINISHED QTY	ENV. DATE
			*1R5025			
			*22R5Q24			
			*5R5T39			
			*22R5Q91	MICA		15
			-19 CAPACITOR #67P1039A	PAPER		14
			-18 WASHER #4 INT. SHAKE			13
			-17 NUT #4-40NC-2BYT230			12
			-16 NUT #4-40NC-2BYT230			11
			-15 TUBE #6AK5			10
			-14 PAN. HD.			
			-13 FLAT. HD.			
			-12 PAN. HD.			
			-11 BINDER HD.			
			-10 SCREW FLAT HD.			9
			-9 DRIVE SCREW	STEEL 3/4 X .058 DIA		8
			-8 CONNECTOR P.304ABW			7
			-7 TUBING #BH9000 No18			6
			-6 LUG #3002			5
			-5 POST #103A-1			4
			-4 SOCKET #SKT-1	TEFLON		3
			-3 TUBE #6AK5			2
			-2 JAN. C-76			1
			WIRE MIL-W-3861	COPPER		21
			RC32GF22J			
			RC20BF683K			
			RC20BF183K			
			RC20BF104K	RESISTOR MIL-R-11		
			TS1C U01	SHIELD		
			TS102P01	SOCKET JAN-5-28		
			SM-C-31958-3	NAME PLATE		
			SM-B-31957	SPRING		
			SM-B-31956	NUT		
			SM-B-31951	PLATE		
			SM-B-31950	TOP		
			SM-B-31249	PLATE		
			SM-B-31248	PLATE		
			SM-C-283226-1	CAPACITOR	MICA	
			SM-D-249088	COIL A35X.		

UNLESS OTHERWISE SPECIFIED DIMENSIONS ARE IN INCHES TOLERANCES ON FRACTIONS DECIMALS ANGLES		COLLINS RADIO CO. CEDAR RAPIDS, IA 28719-PH-55-93		DEPARTMENT OF THE ARMY SIGNAL CORPS ENGINEERING LABORATORIES	
NEXT ARMY USED ON		APPROVED R.F.S.		ANT. COIL T 203 2.0-4.0 MC SIG. C INSP 87292	
APPLICATION		DATE 4 SEP 56		SCALE	
				SM-D-33306	

REFERRING TO THIS DRAWING STATE DRAWING NO., APPLICABLE ISSUE & REVISION, IF ANY, AND DATE.