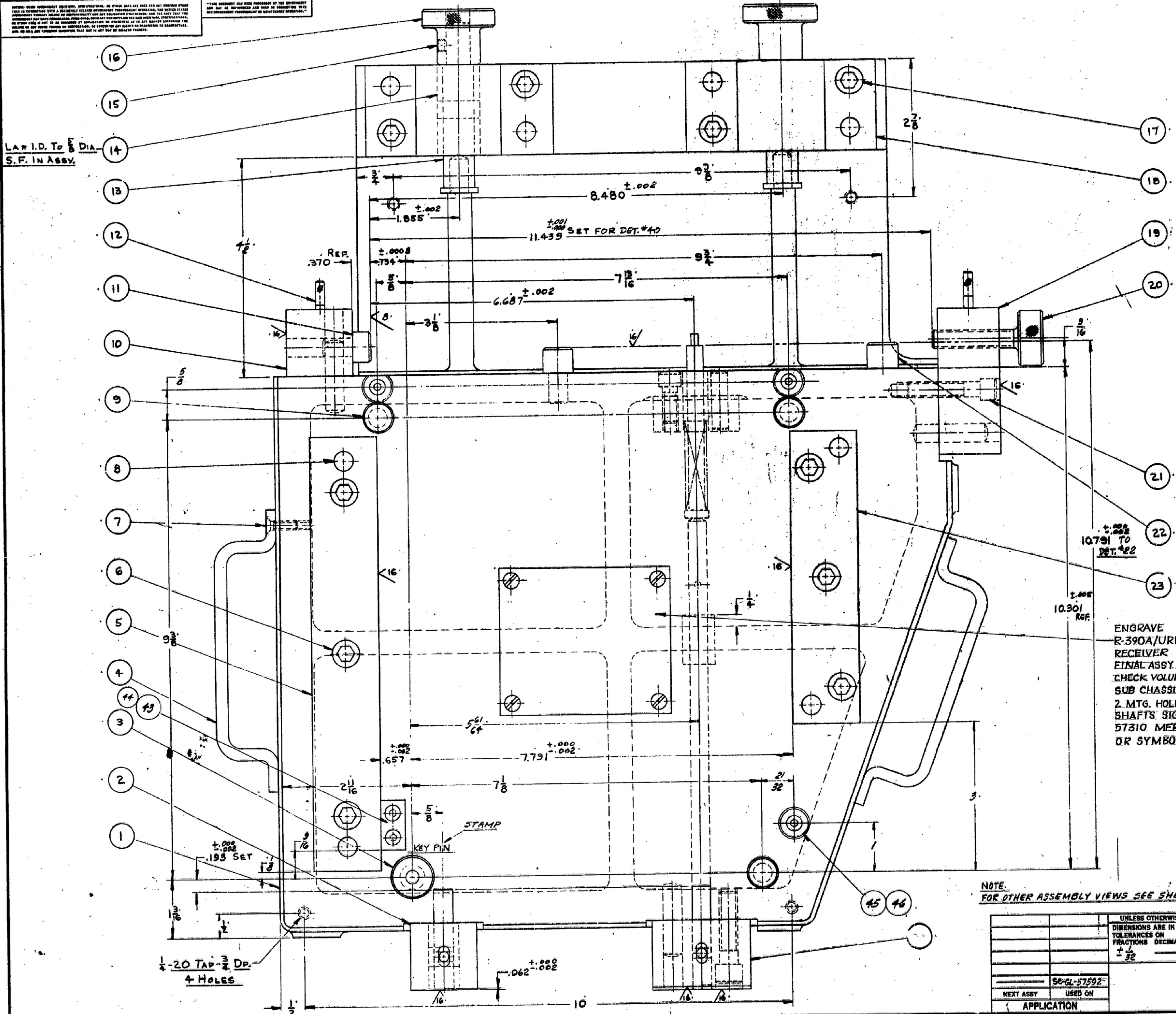


APPROVED FOR CONSTRUCTION BY THE STANLEY WORKS NEW BRITAIN, CONN. OR EQUAL
 APPROVED FOR CONSTRUCTION BY THE WEST POINT MANUFACTURING CO.
 APPROVED FOR CONSTRUCTION BY ACME INDUSTRIAL CO. 200 N. CAPLIN ST.
 CHICAGO 7, ILL. OR EQUAL
 APPROVED FOR CONSTRUCTION BY KLICR ENGINEERING CO. 2200 SANTA MONICA BLVD.
 LOS ANGELES 26, CAL. OR EQUAL

L.A. I.D. TO 1/8 DIA.
 S.F. IN ASSY.



- NOTES:
1. SUPPLIED BY THE STANLEY WORKS NEW BRITAIN, CONN. OR EQUAL
 2. SUPPLIED BY WEST POINT MANUFACTURING CO. 26955 W. SEVEN MILE DETROIT 19, MICH. OR EQUAL
 3. SUPPLIED BY ACME INDUSTRIAL CO. 200 N. CAPLIN ST. CHICAGO 7, ILL. OR EQUAL
 4. SUPPLIED BY KLICR ENGINEERING CO. 2200 SANTA MONICA BLVD. LOS ANGELES 26, CAL. OR EQUAL
 5. THIS GAGE WILL CHECK SM-D-57310
 6. A PROTECTIVE FINISH PER SPEC. MIL-G-10944 (ORD) SHALL BE APPLIED TO NON-FUNCTIONING, NON-GRINDING & NON-LOCATING SURFACES TO PREVENT CORROSION. BLACK OR GRAY COLORS ARE PREFERRED.

IT	REQD	PART NO.	DESCRIPTION	MATL	MATL SPEC	NOTES
46	3	46	1/8-32 X 3/4 PLAT NO. SCR.			
45	3	45	WASPO REAR BUTTON 7000 B			2
44	2	44	1/8-32 X 1/2 PLAT NO. SCR.			
43	1	43	PAD 1/4 X 1/2 X 1			
42	1	42	PIN 1/8 DIA. X 1 1/2 APP.			
41	2	41	1/8-32 X 1/2 PLAT NO. SCR.			3
40	1	40	PIN 3/8 DIA. X 1 1/2 APP.			
39	2	39	1/8 DIA. X 1/2 DONNEL			
38	2	38	1/8-16 X 1/2 SOC. HD. SCR.	STEEL		
37	6	37	1/8-16 X 1/2 SOC. HD. SCR.			3
36	2	36	PIN 1/8 DIA. X 3/4 APP.			
35	1	35	RID 3/8 DIA. X 3/4			
34	4	34	1/8-16 X 1/2 PLAT NO. SCR.			3
33	2	33	1/8 DIA. X 1/2 DONNEL			
32	1	32	RID 3/8 DIA. X 3/4 APP.			
31	1	31	PIN 1/8 DIA. X 3/4			
30	1	30	PIN 1/8 DIA. X 3/4			
29	2	29	SPRING TO SUIT WIRE	80-W-474		
28	1	28	BLOCK 1/2 X 1 1/2 X 3/4			
27	2	27	1/8-16 X 1/2 PLAT NO. SCR.			3
26	1	26	HANDLE 3/8 DIA. X 1			
25	1	25	1/8-32 X 1/2 SOC. SET.			
24	1	24	BLOCK 1/2 X 1 1/2 X 3/4			
23	1	23	RAIL 1/8 X 1 1/2 X 6	STEEL		
22	2	22	WASPO REAR BUTTON 7000 B			2
21	3	21	1/8-16 X 1 1/2 SOC. HD. SCR.			
20	1	20	WASPO REAR BUTTON 7000 B			4
19	1	19	BLOCK 1/2 X 3 X 3			
18	2	18	BLOCK 1/2 X 3 1/2 X 3 1/2 AL. ALLOY			
17	10	17	1/8-16 X 1/2 SOC. HD. SCR.	STEEL		
16	2	16	KNOB 1/2 DIA. X 1 1/2	AL. ALLOY		
15	2	15	1/4-20 X 1 1/2 SOC. SET SCR.			
14	4	14	1/8-16 X 1/2 PLAT NO. SCR.			3
13	2	13	PIN 3/8 DIA. X 3/4			
12	4	12	HANDLE 3/8 DIA. X 1 1/2			
11	1	11	WASPO REAR BUTTON 7000 B			2
10	1	10	BLOCK 1/2 X 3 X 1 1/2			
9	3	9	WASPO REAR BUTTON 7000 B	STEEL		2
8	14	8	1/8 DIA. X 1 1/2 DONNEL			
7	8	7	1/8-32 X 1/2 PLAT NO. SCR.			
6	6	6	1/8-16 X 1 1/2 SOC. HD. SCR.			
5	1	5	RAIL 1/8 X 1 1/2 X 8 1/2			1
4	2	4	STANLEY WORKS PLAT NO. SCR.			
3	1	3	PIN 1/8 DIA. X 1 1/2			
2	1	2	BLOCK 1/2 X 3 X 1 1/2	AL. ALLOY		

NOTE: FOR OTHER ASSEMBLY VIEWS SEE SHEET 2

UNLESS OTHERWISE SPECIFIED	DIMENSIONS ARE IN INCHES
TOLERANCES ON FRACTIONS	DECIMALS ANGLES
± 1/32	± .005
± 1/64	± .002
± 1/128	± .001
± 1/256	± .0005
± 1/512	± .0002
± 1/1024	± .0001

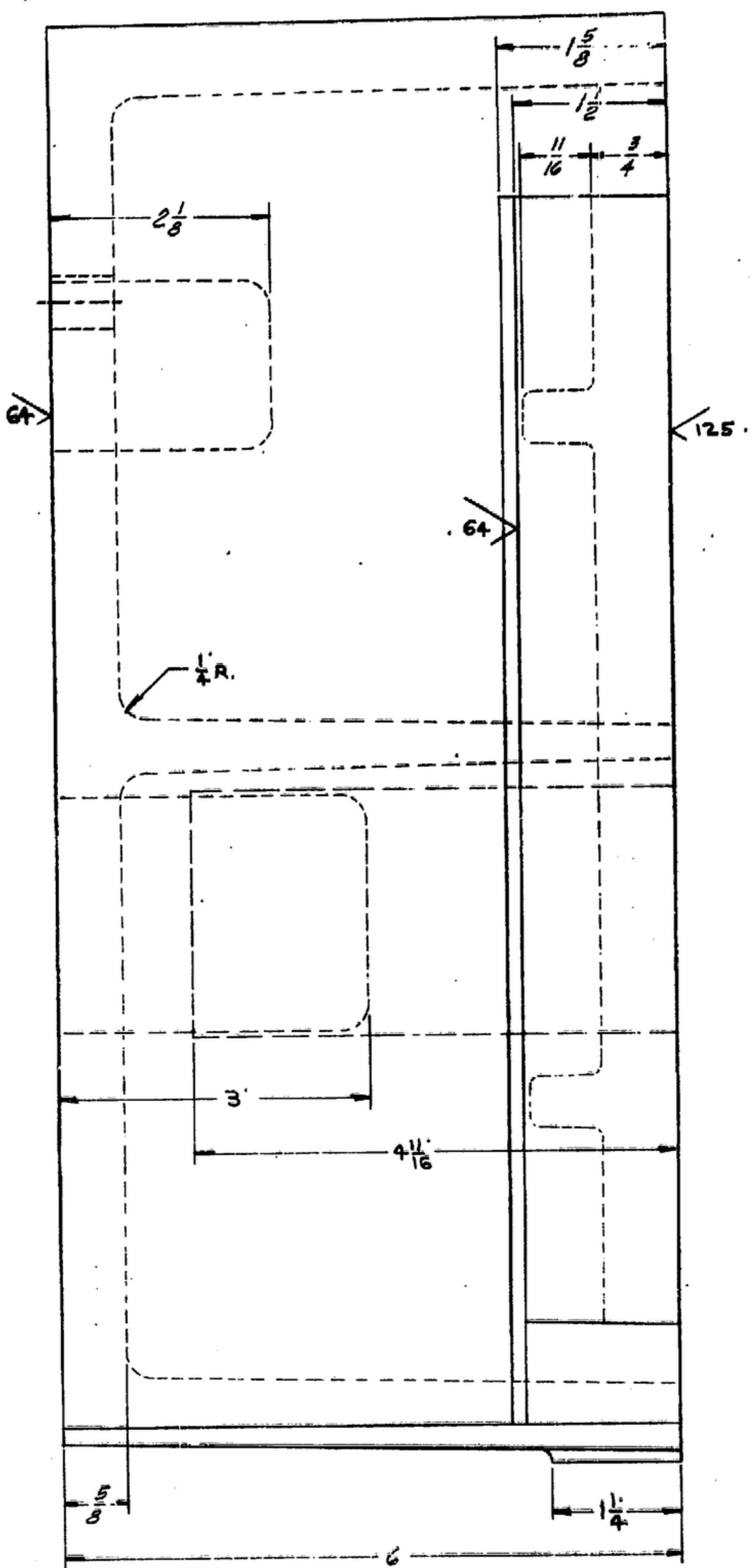
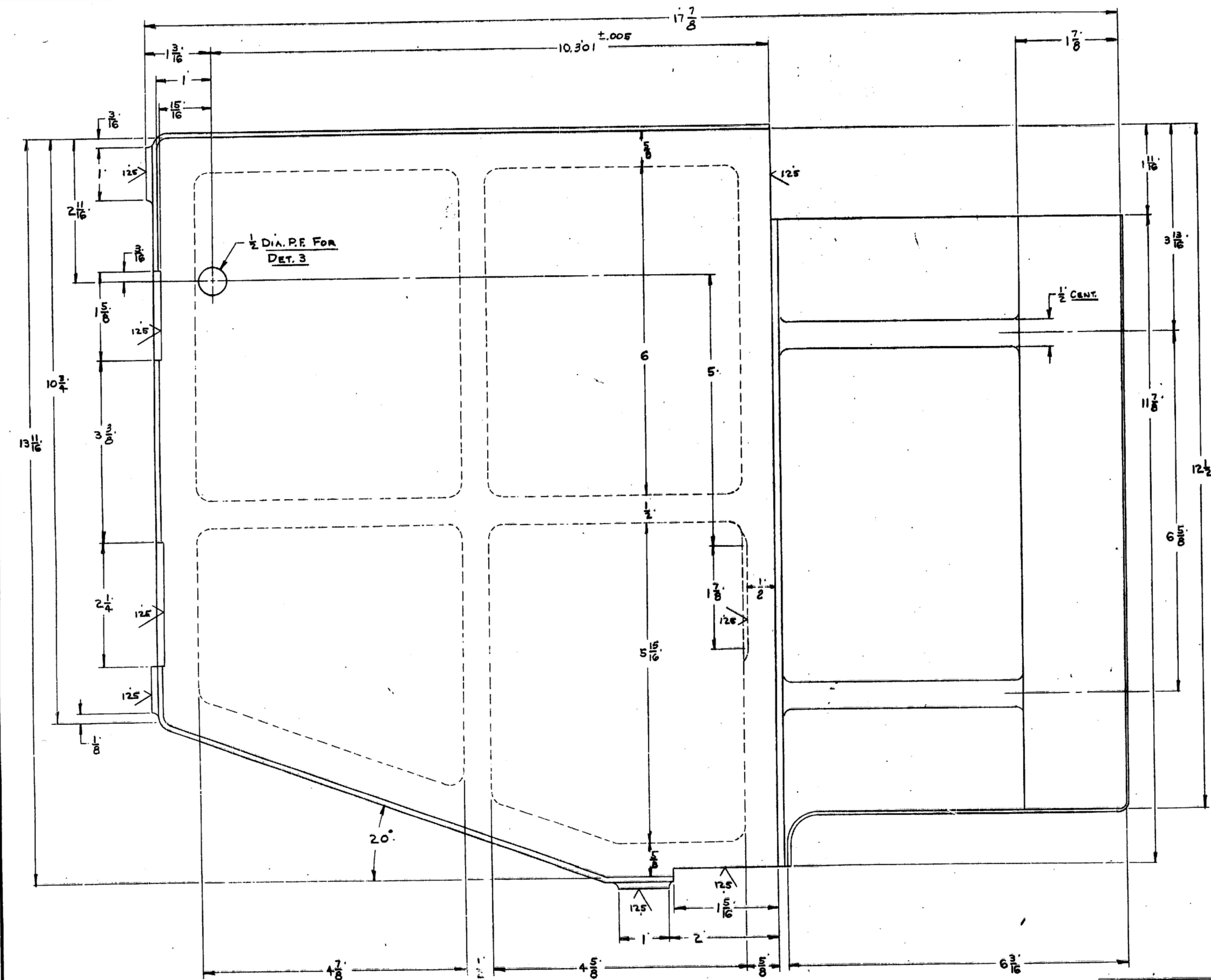
ORDER # 08719-PH-55-93
 SIGNAL CORPS
 REVIEWED P.M.E.
 APPROVED W.H. P.M.E.
 DATE 21-10-55 SCALE FULL

GAGE
 To CHECK VOLUME OF R.F. SUB CHASSIS & LOCATION OF 2 MOUNTING HOLES & 2 SHAFTS

DEPARTMENT OF THE ARMY
 SIGNAL CORPS ENGINEERING LABORATORIES
 FORT MONMOUTH NEW JERSEY
 SM-D-57310
 SHEET 1 OF 5

NOTE: *FOR INFORMATION ONLY CONTRACTOR MAY AT HIS OPTION DEVIATE FROM THESE PROCESS DETAILS

OTHER: WHEN APPROVING DRAWINGS, SPECIFICATIONS, OR OTHER DATA USE FOR ANY PURPOSE OTHER THAN AS GOVERNMENT PROPERTY OR FOR THE PERFORMANCE OF GOVERNMENT FUNCTIONS. THE DRAWING DATA GOVERNMENT PROPERTY IS NOT TO BE REPRODUCED OR TRANSMITTED IN ANY FORM OR BY ANY MEANS, ELECTRONIC OR MECHANICAL, INCLUDING PHOTOCOPYING, RECORDING, OR BY ANY INFORMATION STORAGE AND RETRIEVAL SYSTEM. THE GOVERNMENT ASSUMES NO LIABILITY FOR ANY DAMAGE TO PERSONS OR PROPERTY THAT MAY BE CAUSED BY THE USE OF THIS DRAWING OR INFORMATION THEREFROM. THE GOVERNMENT ASSUMES NO LIABILITY FOR ANY DAMAGE TO PERSONS OR PROPERTY THAT MAY BE CAUSED BY THE USE OF THIS DRAWING OR INFORMATION THEREFROM.



① 1 REQ. ALUMINUM ALLOY SANDCASTING
 COMP. #3 - HEAT TREAT PER SPEC. GR-A-601.

REQD	PART NO.	DESCRIPTION	MATL	MATL SPEC

UNLESS OTHERWISE SPECIFIED		DIMENSIONS ARE IN INCHES	
FRACTIONS	DECIMALS	ANGLES	TOLERANCES
			±.005

REVIEWED	PME	APPROVED	M.H. PME
DATE	21-10-55	SCALE	FULL

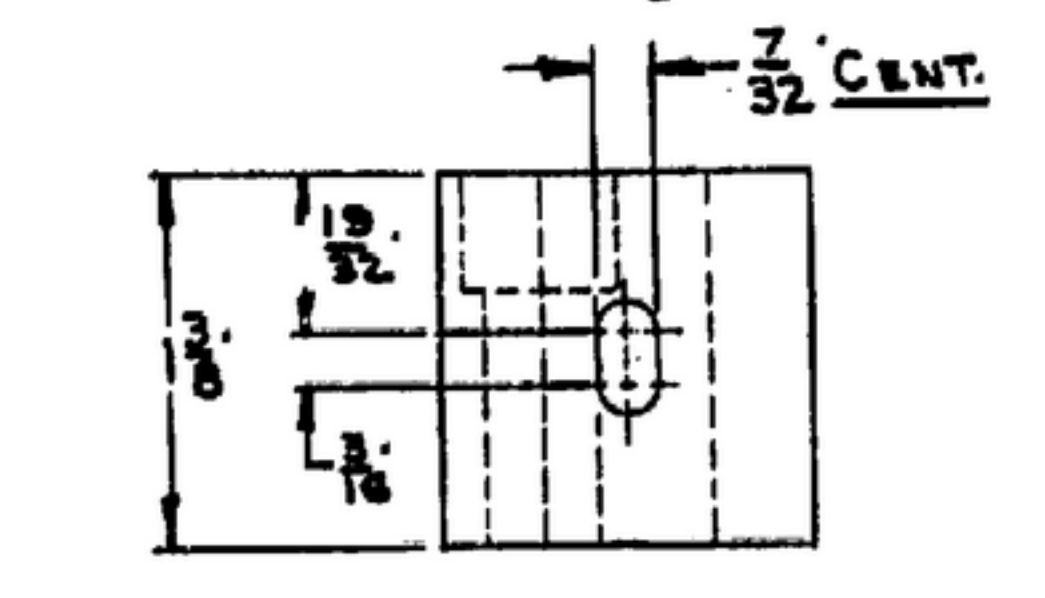
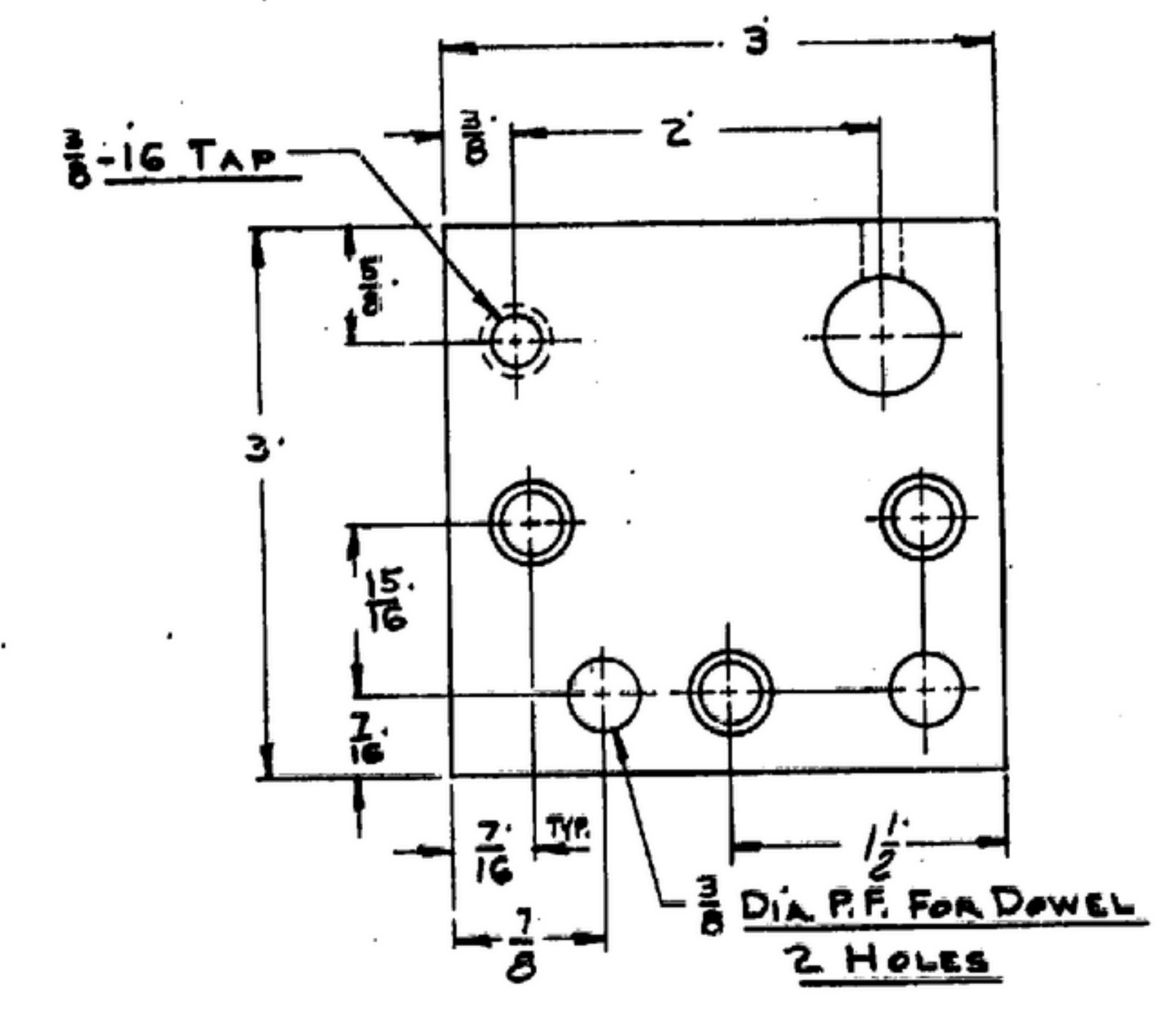
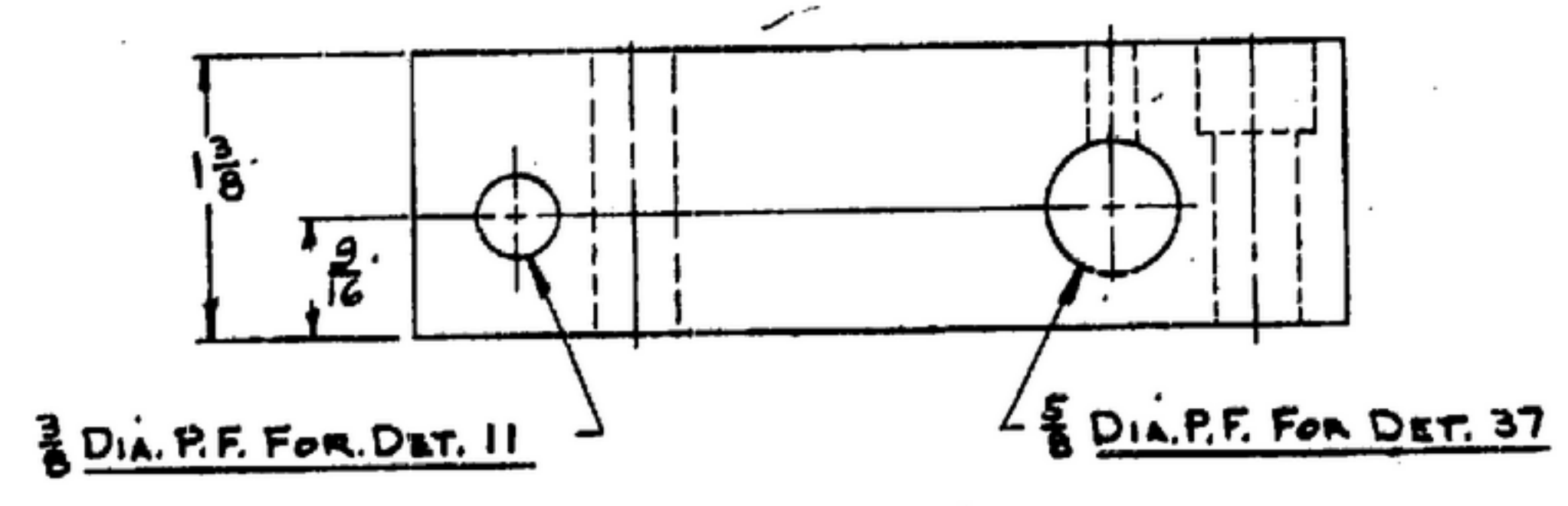
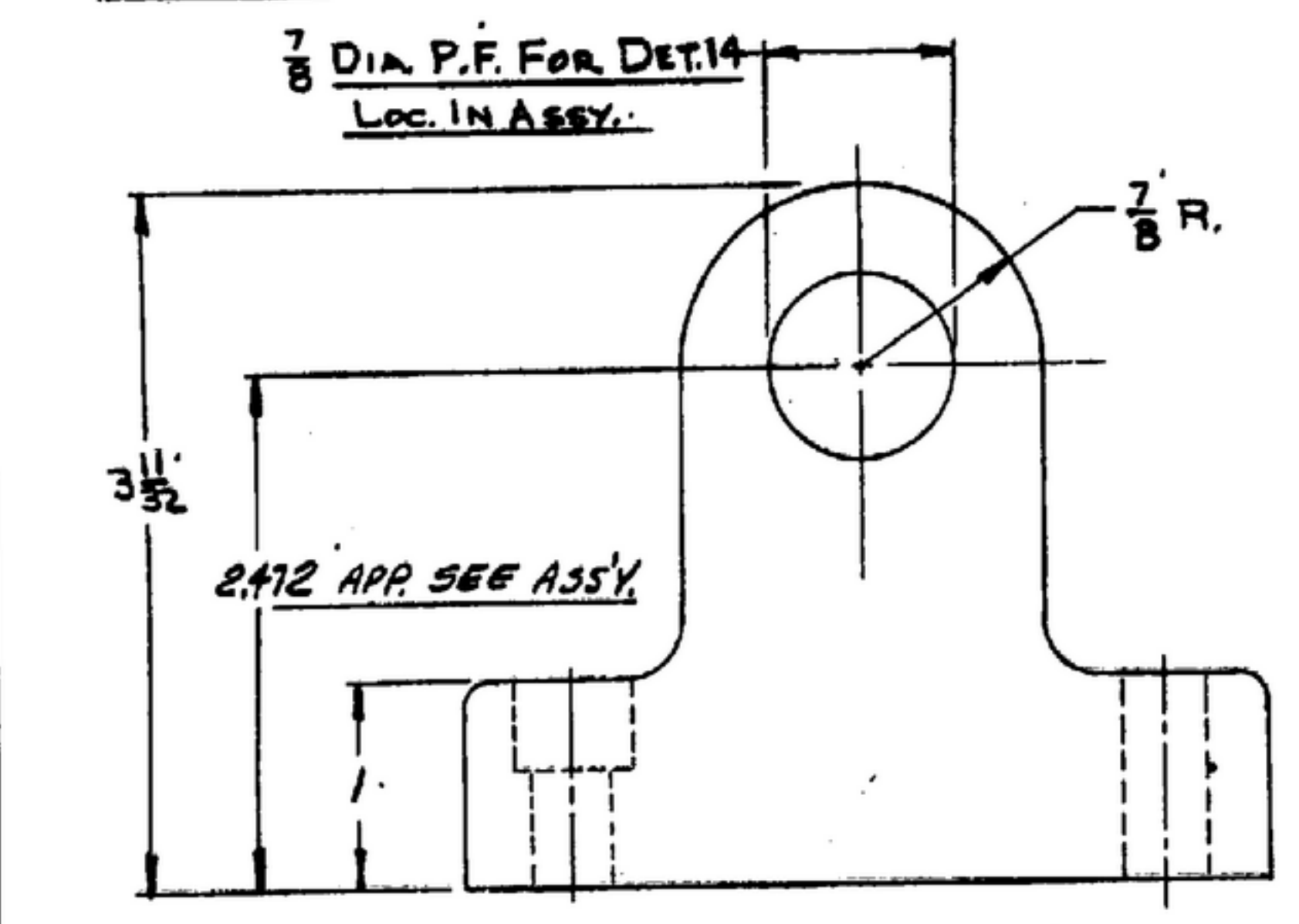
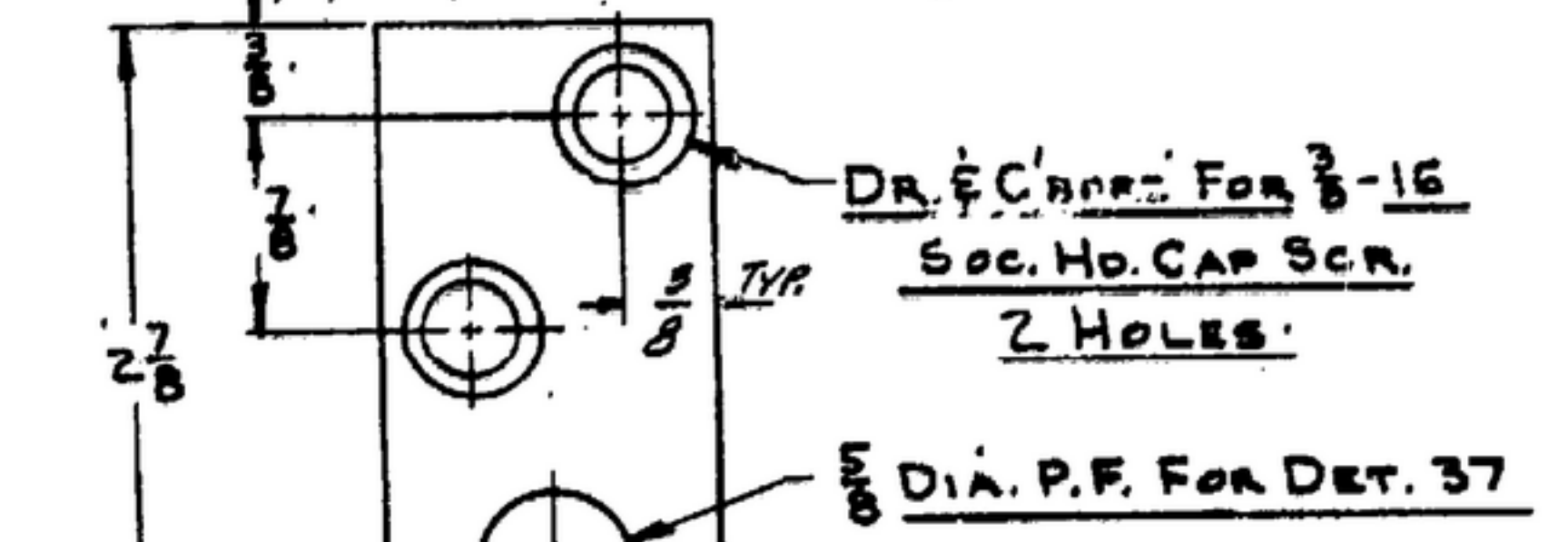
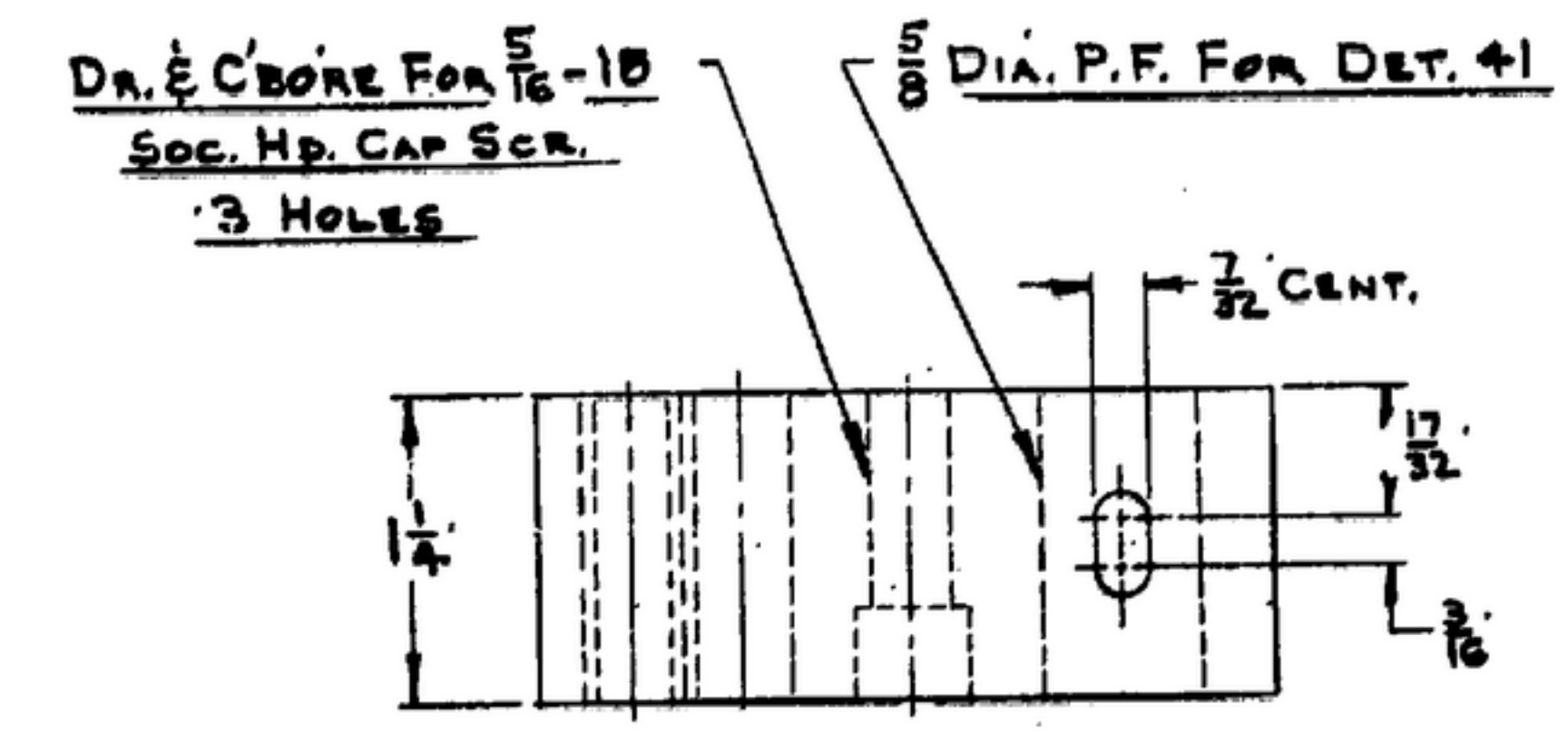
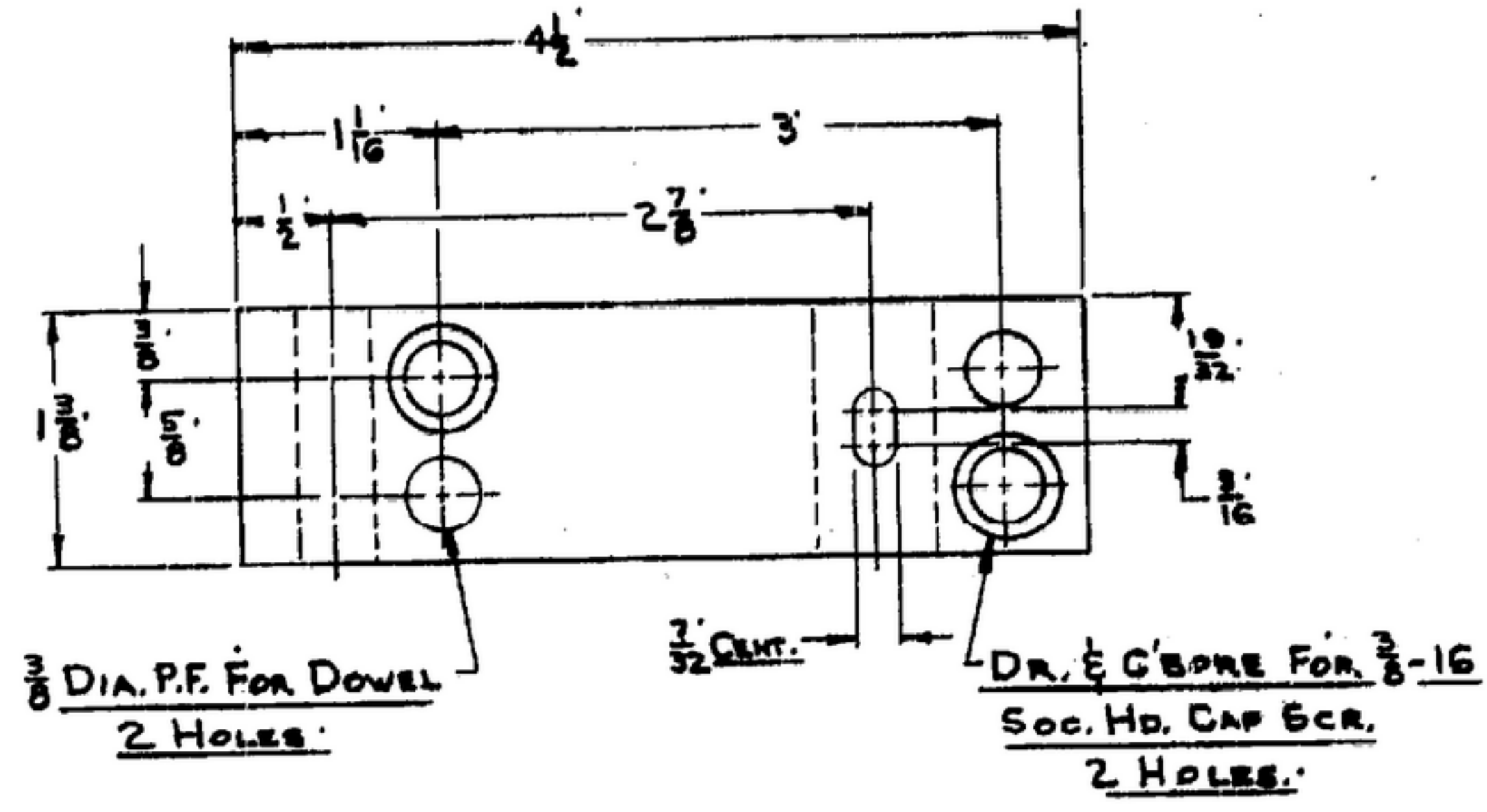
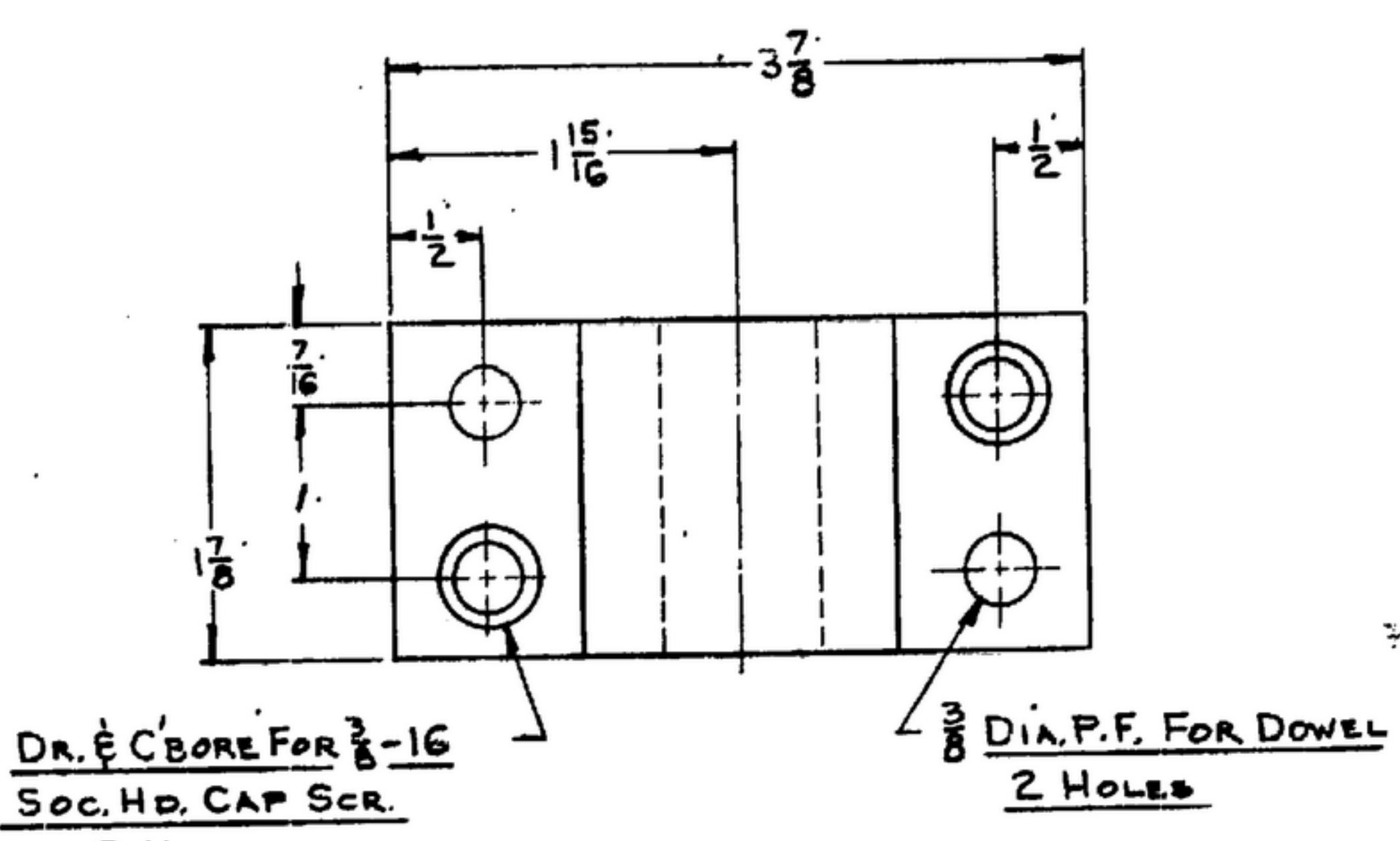
ORDER #	08719-PH-55-93
SIGNAL CORPS	
DEPARTMENT OF THE ARMY	
SIGNAL CORPS ENGINEERING	
LABORATORIES	
FORT MONMOUTH	NEW JERSEY

LIST OF MATERIAL	GAGE
To CHECK VOLUME OF R.F.	
SUB CHASSIS & LOCATION OF	
2 MOUNTING HOLES & 2 SH...	

UNLESS OTHERWISE SPECIFIED, DIMENSIONS ARE IN INCHES. DIMENSIONS IN FRACTIONS SHALL BE TO NEAREST 1/32 INCH UNLESS OTHERWISE SPECIFIED. DIMENSIONS IN DECIMALS SHALL BE TO NEAREST 0.001 INCH UNLESS OTHERWISE SPECIFIED. DIMENSIONS IN DECIMALS SHALL BE TO NEAREST 0.001 INCH UNLESS OTHERWISE SPECIFIED.

"THIS DRAWING IS THE PROPERTY OF THE GOVERNMENT AND IS LOANED TO YOU FOR YOUR INFORMATION ONLY. IT IS NOT TO BE REPRODUCED OR TRANSMITTED IN ANY FORM OR BY ANY MEANS, ELECTRONIC OR MECHANICAL, INCLUDING PHOTOCOPYING, RECORDING, OR BY ANY INFORMATION STORAGE AND RETRIEVAL SYSTEM, WITHOUT PERMISSION IN WRITING FROM THE GOVERNMENT."

NOTE: *FOR INFORMATION ONLY. CONTRACTOR MAY AT HIS OPTION DEVIATE FROM THESE PROCESS DETAILS

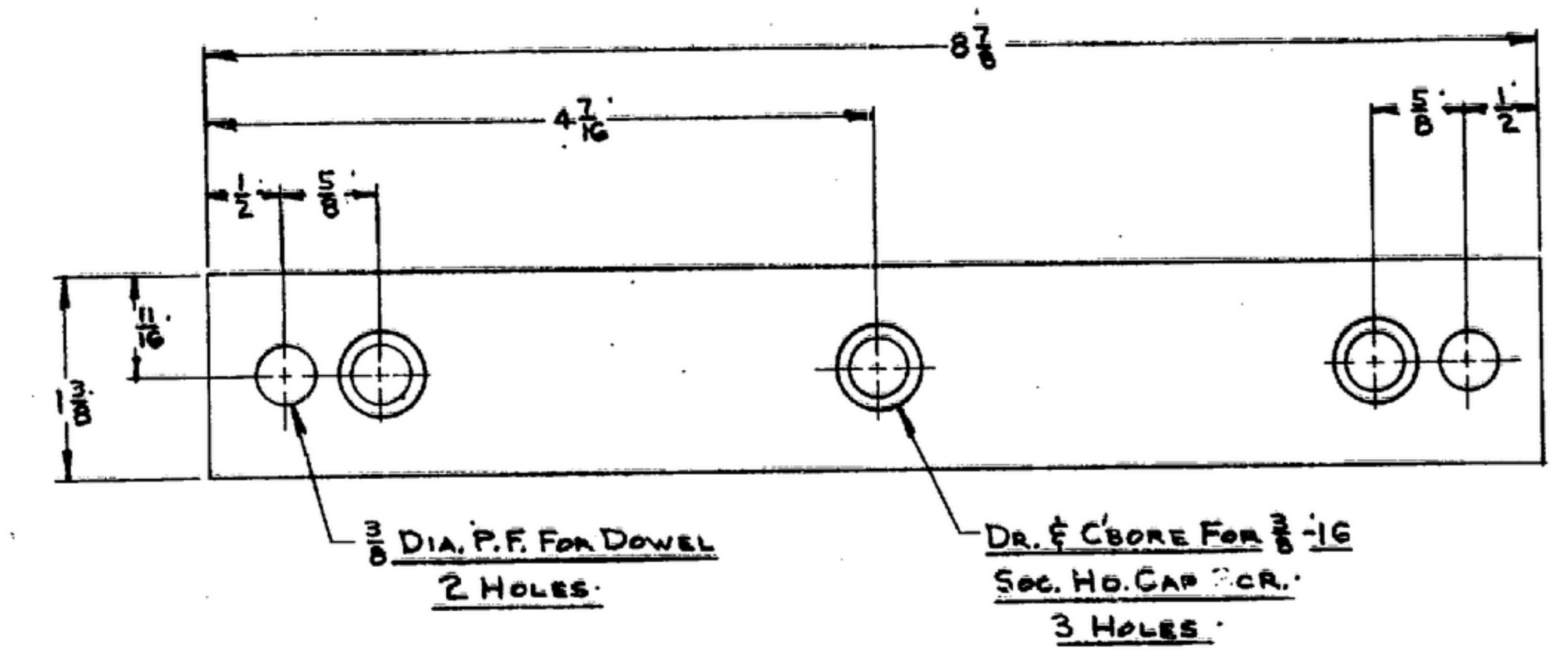
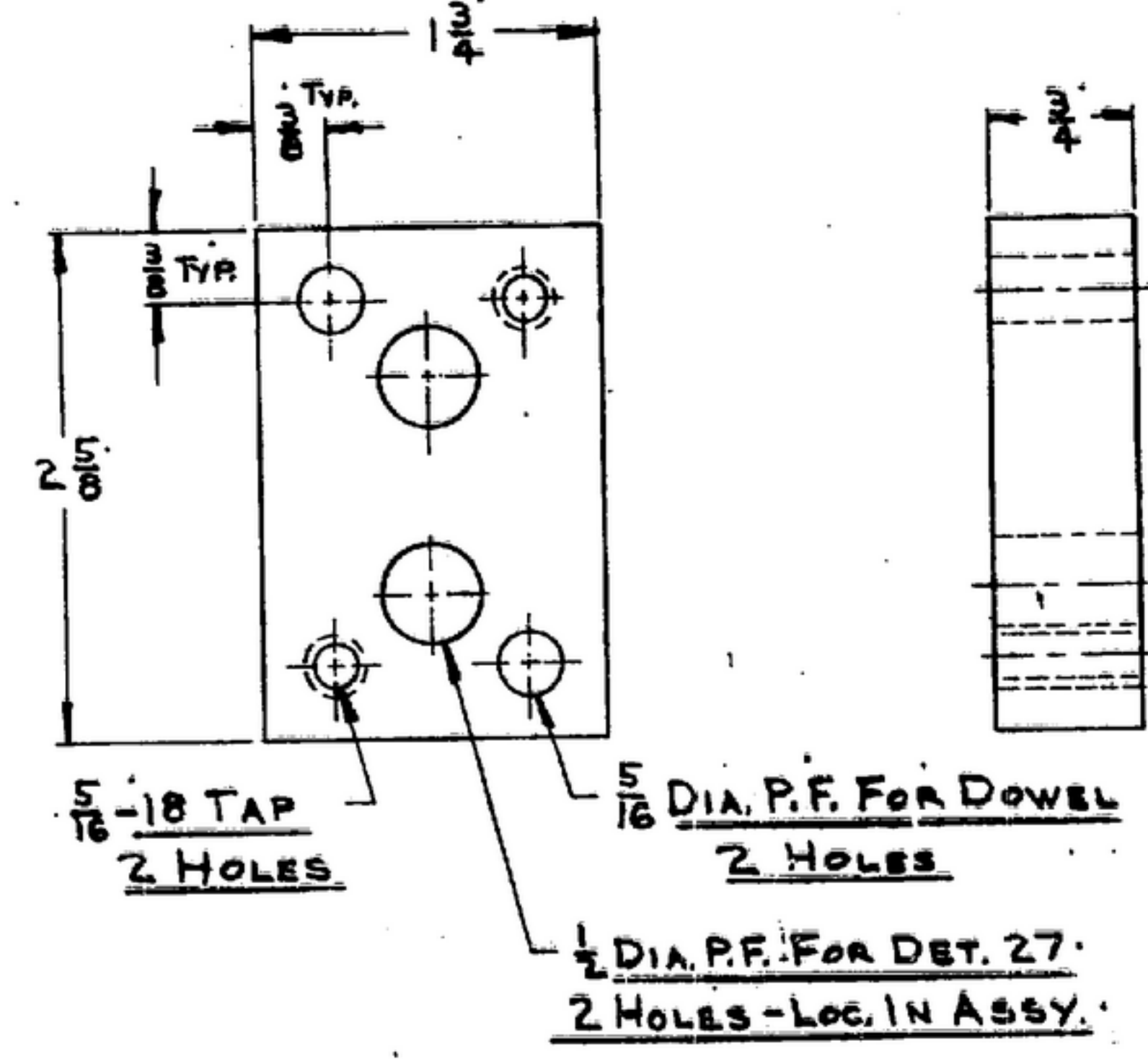
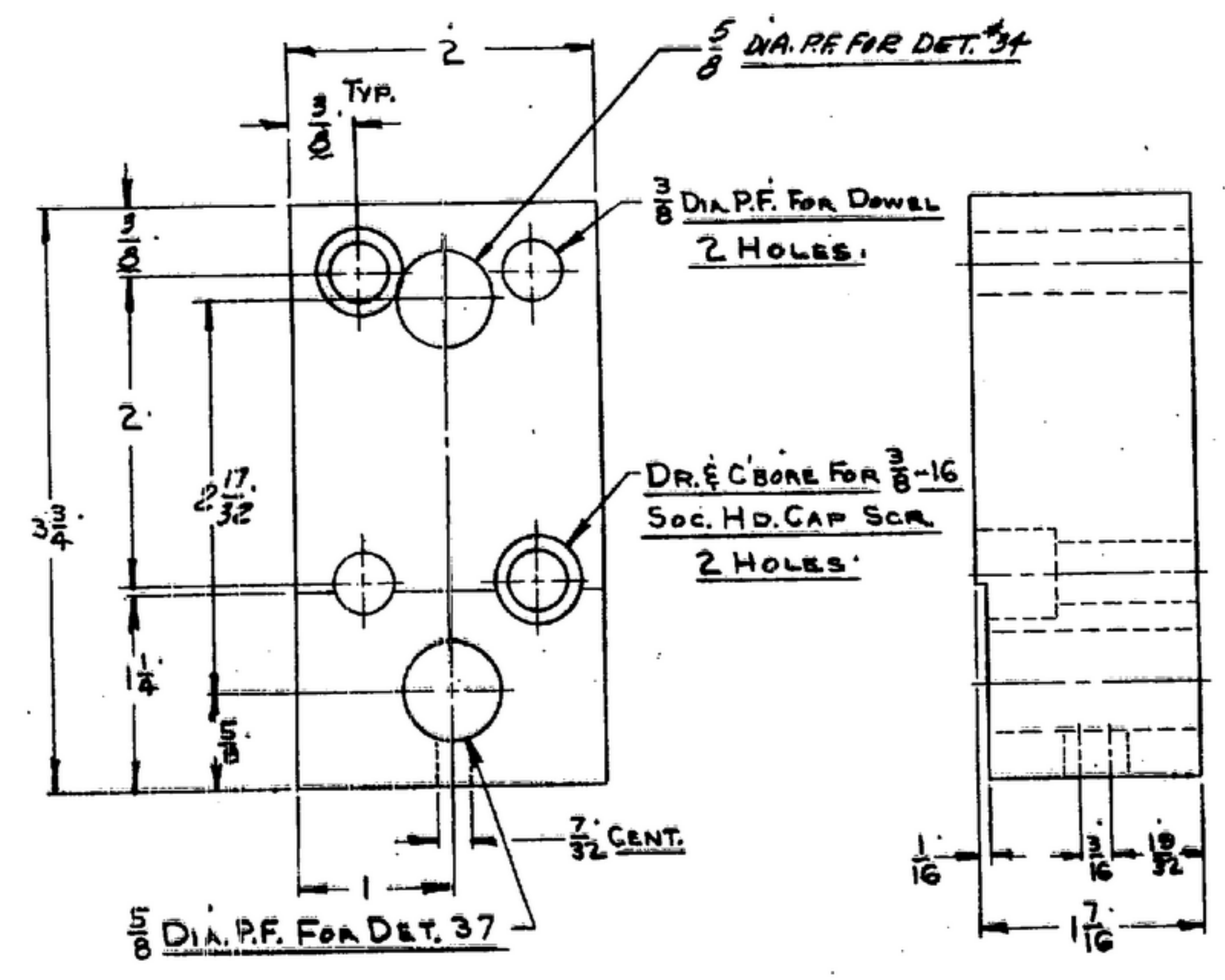


10 BLOCK
1 REQ. - STEEL-NORMALIZED
PER SPEC. QQ-S-633

18 BLOCK
2 REQ. - AL(24ST)
PER SPEC. QQ-A-355

19 BLOCK
1 REQ. - STEEL-NORMALIZED
PER SPEC. QQ-S-633

20 BLOCK
1 REQ. - STEEL-NORMALIZED
PER SPEC. QQ-S-633



5 RAIL
1 REQ. - STEEL-NORMALIZED & TEMPERED
PER SPEC. QQ-S-633 RACK 'G' 60-68

28 BLOCK
1 REQ. - STEEL-NORMALIZED
PER SPEC. QQ-S-633

24 BLOCK
1 REQ. - STEEL-NORMALIZED
PER SPEC. QQ-S-633

EQO	PART NO.	DESCRIPTION	MATL	MATL SPEC
LIST OF MATERIAL				

UNLESS OTHERWISE SPECIFIED DIMENSIONS ARE IN INCHES TOLERANCES ON FRACTIONS DECIMALS ANGLES ± 1/32 ± .005 ± .010 ± .015 ± .020 ± .030 ± .040 ± .050 ± .060 ± .070 ± .080 ± .090 ± .100	GEORGE W. BROWN CO. ORDER # 08719-PH-55-93 SIGNAL CORPS	GAGE TO CHECK VOLUME OF R.F. SUB CHASSIS & LOCATION OF 2 MOUNTING HOLES & 2 SHAFTS	DEPARTMENT OF THE ARMY SIGNAL CORPS ENGINEERING LABORATORIES FORT MONMOUTH, NEW JERSEY
	REVIEWED APPROVED DATE 21-10-55		SCALE FULL
	NEXT ASSY USED ON APPLICATION		SM-D-57310 SHEET 4
	WHEN REFERRING TO THIS DRAWING STATE DRAWING NO., APPLICABLE ISSUE, AND DATE.		

