

BY	DESCRIPTION	DATE	APPROVAL
----	-------------	------	----------

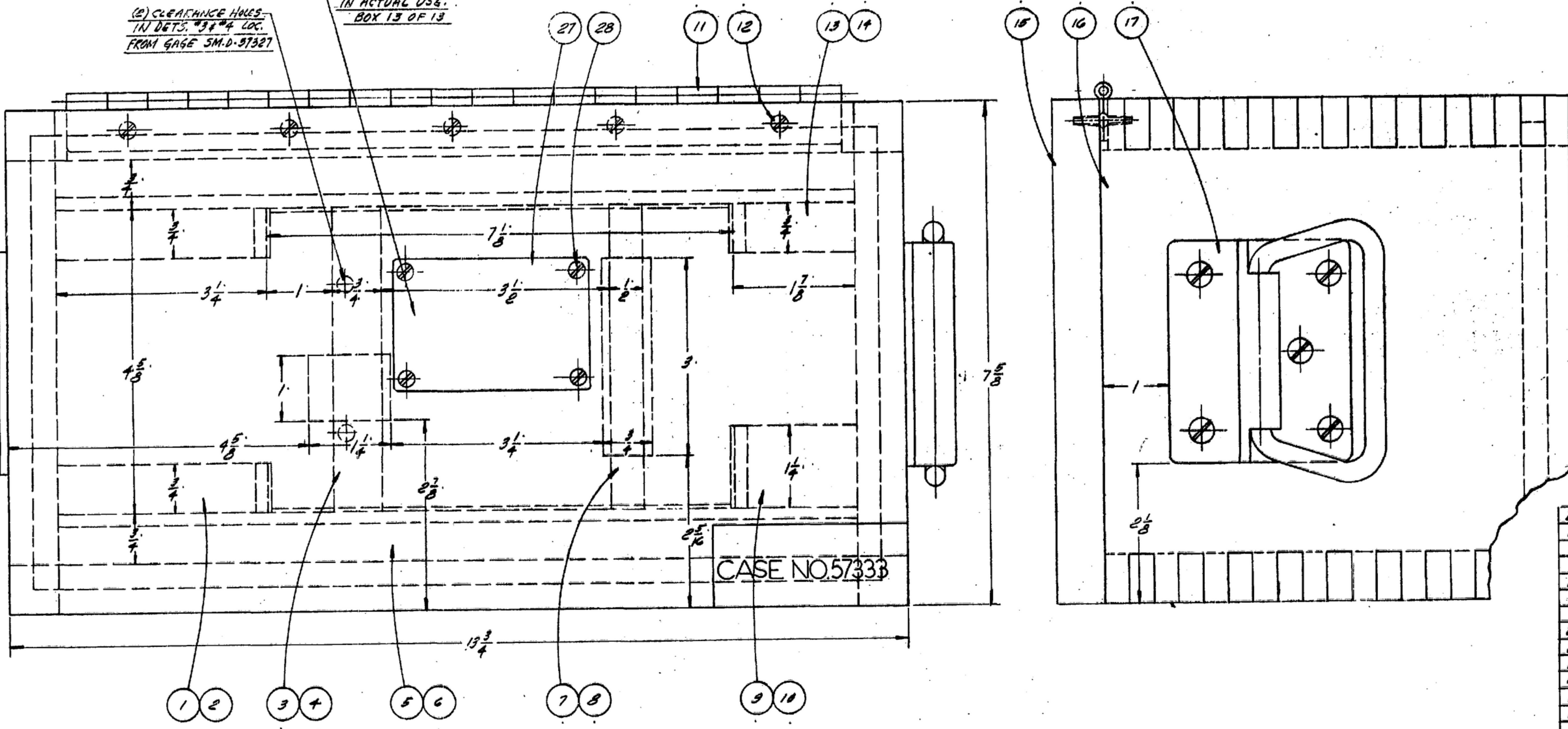
NOTE: \*FOR INFORMATION ONLY, CONTRACTOR MAY AT HIS OPTION DEVIATE FROM THESE PROCESS DETAILS

UNLESS OTHERWISE SPECIFIED, DIMENSIONS ARE IN INCHES. DIMENSIONS ON FRACTIONS ON ANGLES SHALL BE DECIMALS. DIMENSIONS ON FRACTIONS ON ANGLES SHALL BE DECIMALS. DIMENSIONS ON FRACTIONS ON ANGLES SHALL BE DECIMALS.

THIS DRAWING HAS BEEN FORWARDED BY THE ENGINEER AND HAS BEEN APPROVED FOR THE CONTRACTOR'S USE.

(2) CLEARANCE HOLES IN DETS. 38 & 4 LOC. FROM GAGE SM-D-57327

ENGRAVE GAGE FOR R-390A/URR CAUTION - PRECISION INSTRUMENT HANDLE WITH CARE REPLACE GAGE IN ASSIGNED POSITION IN CASE WHEN NOT IN ACTUAL USE. BOX 13 OF 13



- NOTES.
- SUPPLIED BY MEMMASTER-CARR SUPPLY CO. 670 W. LAKE ST. CHICAGO 6, ILL. OR EQUAL
  - SUPPLIED BY CORBIN CABINET LOCK DIV. THE AMERICAN HARDWARE CORP. NEW BRITAIN, CONN. OR EQUAL
  - COMMERCIAL DOUGLAS FIR PLYWOOD EXTERIOR TYPE, GRADE SOUND 2, SIDES EXTERIOR PER SPEC. MIL-P-66.
  - ALL JOINTS INCLUDING BOTTOM SHALL BE BONDED WITH ADHESIVE PER SPEC. MIL-A-897 TYPE 1, CLASS 1 AND APPLIED PER SPEC. MIL-A-5483.
  - BREAK ALL UNNECESSARY SHARP EDGES.
  - BEFORE ASSEMBLY OF HARDWARE, PADDING AND NAMEPLATE, ALL INSIDE AND OUTSIDE SURFACES OF CASE SHALL BE FINISHED AS FOLLOWS, SAND AND APPLY ONE COAT OF WOOD SEALER PER SPEC. MIL-S-1351B, STENCIL AS INDICATED AND APPLY TWO COATS OF CLEAR SPAR VARNISH PER SPEC. TT-V-119.

NO	QTY	DESCRIPTION	MATL	MATL SPEC	NOTES
28	4	28 1/2 x 1/2 RD. HD. WOOD SCR.	BRASS		
27	1	27 TAG TO SUIT	AL. ALLOY	QA-A-318	
26	1	26 BOTTOM 3/4 x 6 1/2 x 13	PLYWOOD		
25	1	25 PAD 1/2 x 3/4 x 3		C-F-206	
24	1	24 BLOCK 3/4 x 2 1/2 x 3	PLYWOOD		
23	1	23 CORBIN CATCH #15824			2
22	1	22 CORBIN STRIKE #18794			2
21	4	21 1/2 x 1/2 RD. HD. WOOD SCR.	BRASS		
20	1	20 PAD 1/2 x 1 x 1 1/4	FELT	C-F-206	
19	1	19 BLOCK 1 x 1 1/4 x 1 3/4	HARDWOOD	MM-L-736	
18	2	18 SIDE 3/4 x 7 1/2 x 13 3/4	PLYWOOD		
17	2	17 CASE BRIT. 1/2 x 1 1/2 x 1 1/2			1
16	2	16 SIDE 3/4 x 7 1/2 x 7 1/2	PLYWOOD		
15	1	15 TOP 3/4 x 7 1/2 x 13 3/4	PLYWOOD		
14	1	14 PAD 1/2 x 3/4 x 1 1/2	FELT	C-F-206	
13	1	13 RAIL 3/4 x 1 1/2 x 1 1/2	PLYWOOD		
12	10	12 5/8 x 1/2 RAT HD. WOOD SCR.	BRASS		
11	1	11 CONTINUOUS BRASS STRIKE ME MASTER CARTRIDGE			1
10	1	10 PAD 1/2 x 1 1/4 x 1 1/2	FELT	C-F-206	
9	1	9 RAIL 1 1/2 x 1 1/2 x 1 1/2	HARDWOOD	MM-L-736	
8	1	8 PAD 1/2 x 1/2 x 4 3/8	FELT	C-F-206	
7	1	7 RAIL 1/2 x 3/4 x 4 3/8	HARDWOOD	MM-L-736	
6	2	6 PAD 1/2 x 3/4 x 7	FELT	C-F-206	
5	2	5 RAIL 3/4 x 1 1/2 x 12 1/4	PLYWOOD		
4	1	4 PAD 1/2 x 1/2 x 4 3/8	FELT	C-F-206	
3	1	3 RAIL 3/4 x 3/4 x 4 3/8	PLYWOOD		
2	2	2 PAD 1/2 x 3/4 x 1 1/2	FELT	C-F-206	
1	1	SM-D-57333-1 RAIL 3/4 x 1 1/2 x 3 1/4	PLYWOOD		

UNLESS OTHERWISE SPECIFIED DIMENSIONS ARE IN INCHES TOLERANCES ON FRACTIONS ON ANGLES		CHECKED BY: <i>W.H. DME</i> DATE: 25-10-55 SCALE: FULL	CASE GAGE	DEPARTMENT OF THE ARMY SIGNAL CORPS ENGINEERING LABORATORIES FORT MONMOUTH, NEW JERSEY SM-D-57333 SHEET 1 OF 2
NEXT ASSY: <i>SM-D-57392</i> USED ON: _____ APPLICATION: _____	REVIEWED: _____ APPROVED: <i>W.H. DME</i> DATE: 25-10-55			

WHEN REFERRING TO THIS DRAWING STATE DRAWING NO., APPLICABLE ISSUE SYMBOL, IF ANY, AND DATE.

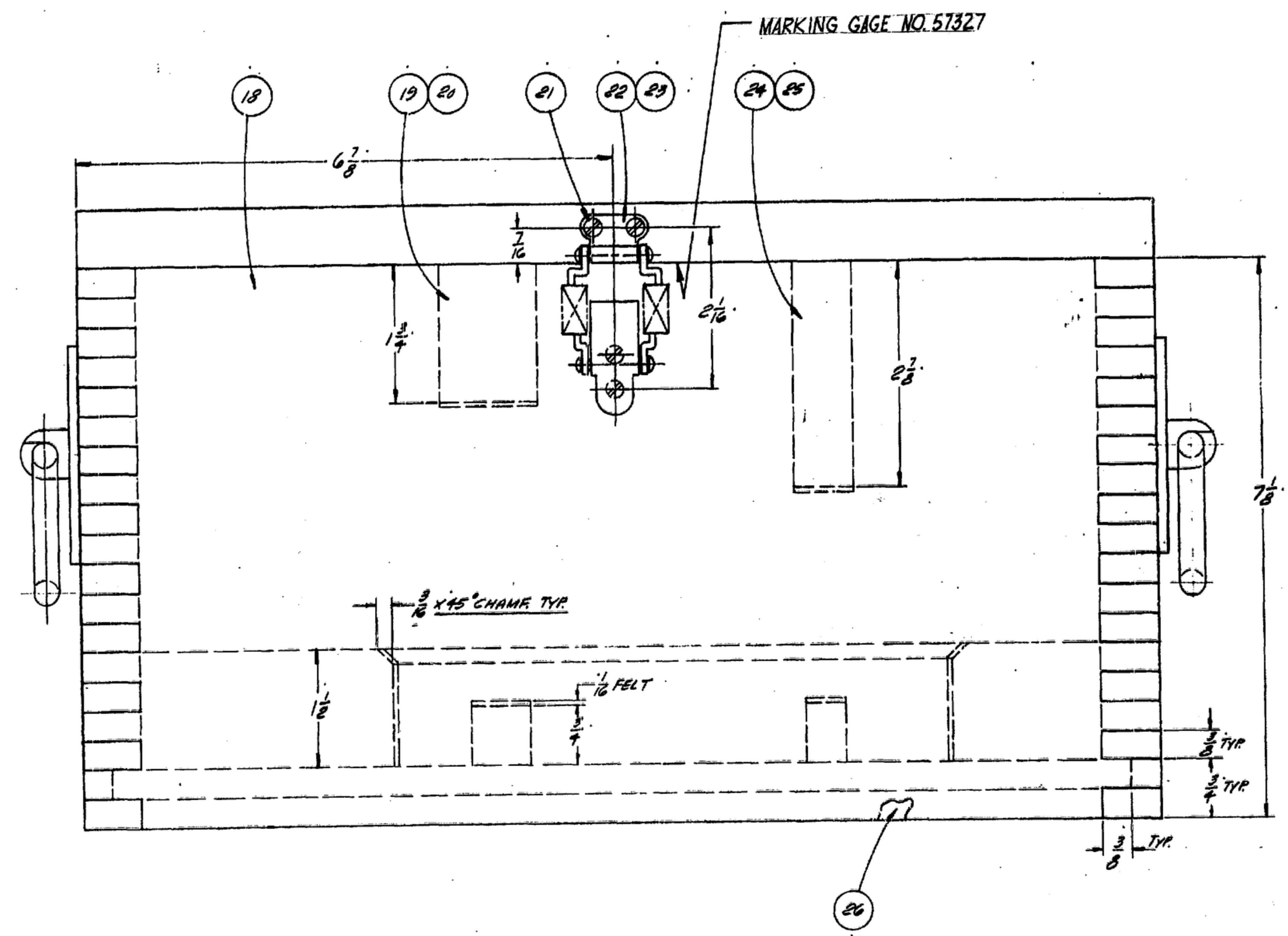


UNLESS OTHERWISE SPECIFIED, DIMENSIONS ARE TO BE TAKEN FROM THE SURFACE UNLESS OTHERWISE INDICATED. DIMENSIONS ARE TO BE TAKEN FROM THE SURFACE UNLESS OTHERWISE INDICATED. DIMENSIONS ARE TO BE TAKEN FROM THE SURFACE UNLESS OTHERWISE INDICATED.

THIS DRAWING IS THE PROPERTY OF THE SIGNAL CORPS ENGINEERING LABORATORIES. IT IS TO BE KEPT IN CONFIDENCE AND NOT TO BE REPRODUCED OR TRANSMITTED IN ANY FORM OR BY ANY MEANS, ELECTRONIC OR MECHANICAL, INCLUDING PHOTOCOPYING, RECORDING, OR BY ANY INFORMATION STORAGE AND RETRIEVAL SYSTEM.

NOTE:  
\*FOR INFORMATION ONLY. CONTRACTOR MAY AT HIS OPTION DEVIATE FROM THESE PROCESS DETAILS

REVISIONS ORIGINAL ISSUE # 25-10-53			
SYM	DESCRIPTION	DATE	APPROVAL



QTY	PART NO.	DESCRIPTION	MATL.	NATL. SPEC.
LIST OF MATERIAL				

UNLESS OTHERWISE SPECIFIED DIMENSIONS ARE IN INCHES TOLERANCES ON FRACTIONS DECIMALS ANGLES + 1/32 - 1/32		ORDER # 08719-PH-55-93 SIGNAL CORPS	<b>CASE GAGE</b>	DEPARTMENT OF THE ARMY SIGNAL CORPS ENGINEERING LABORATORIES FORT MONMOUTH NEW JERSEY
REVIEWED PME	APPROVED M. H. PME	DATE 25-10-53		
NEXT ASSY	USED ON	SCALE FULL	SM-D-57333	SHEET 2 OF 2
APPLICATION		WHEN REFERRING TO THIS DRAWING STATE DRAWING NO., APPLICABLE ISSUE, AND DATE.		