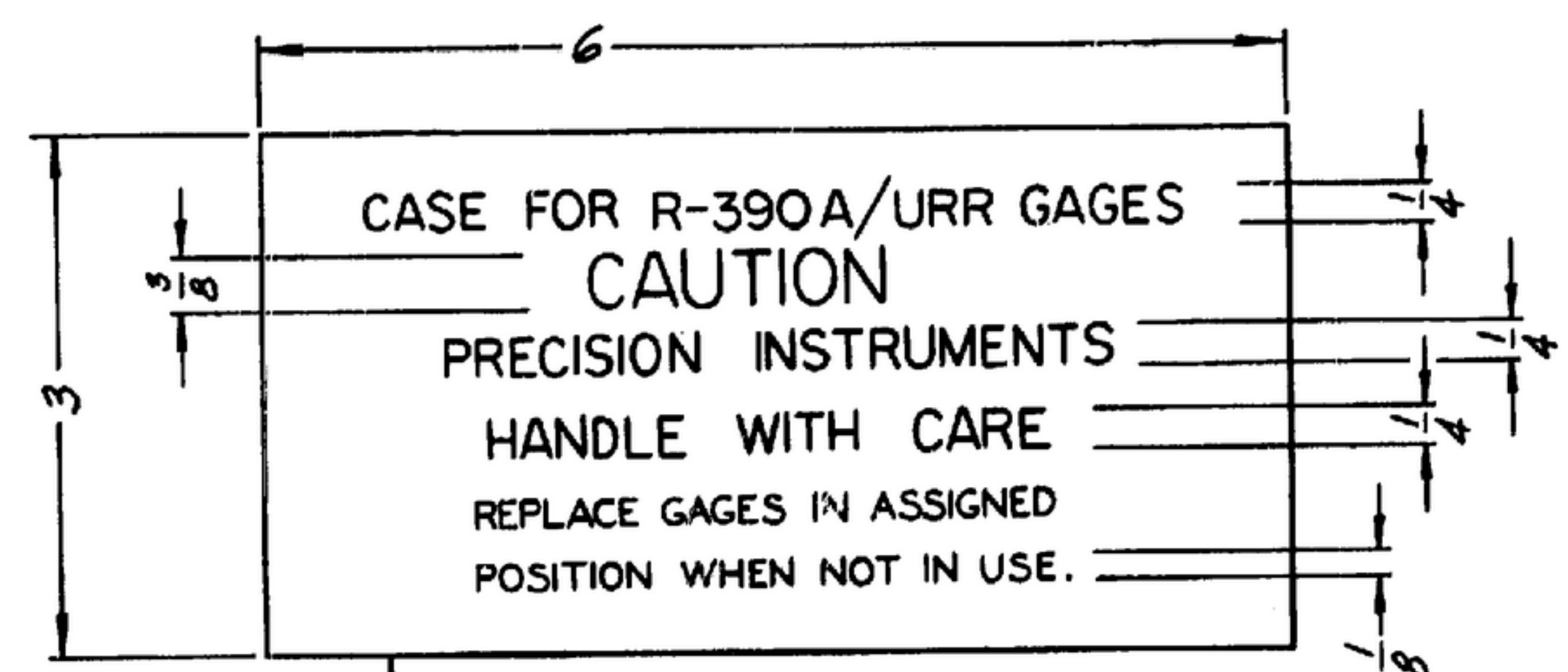
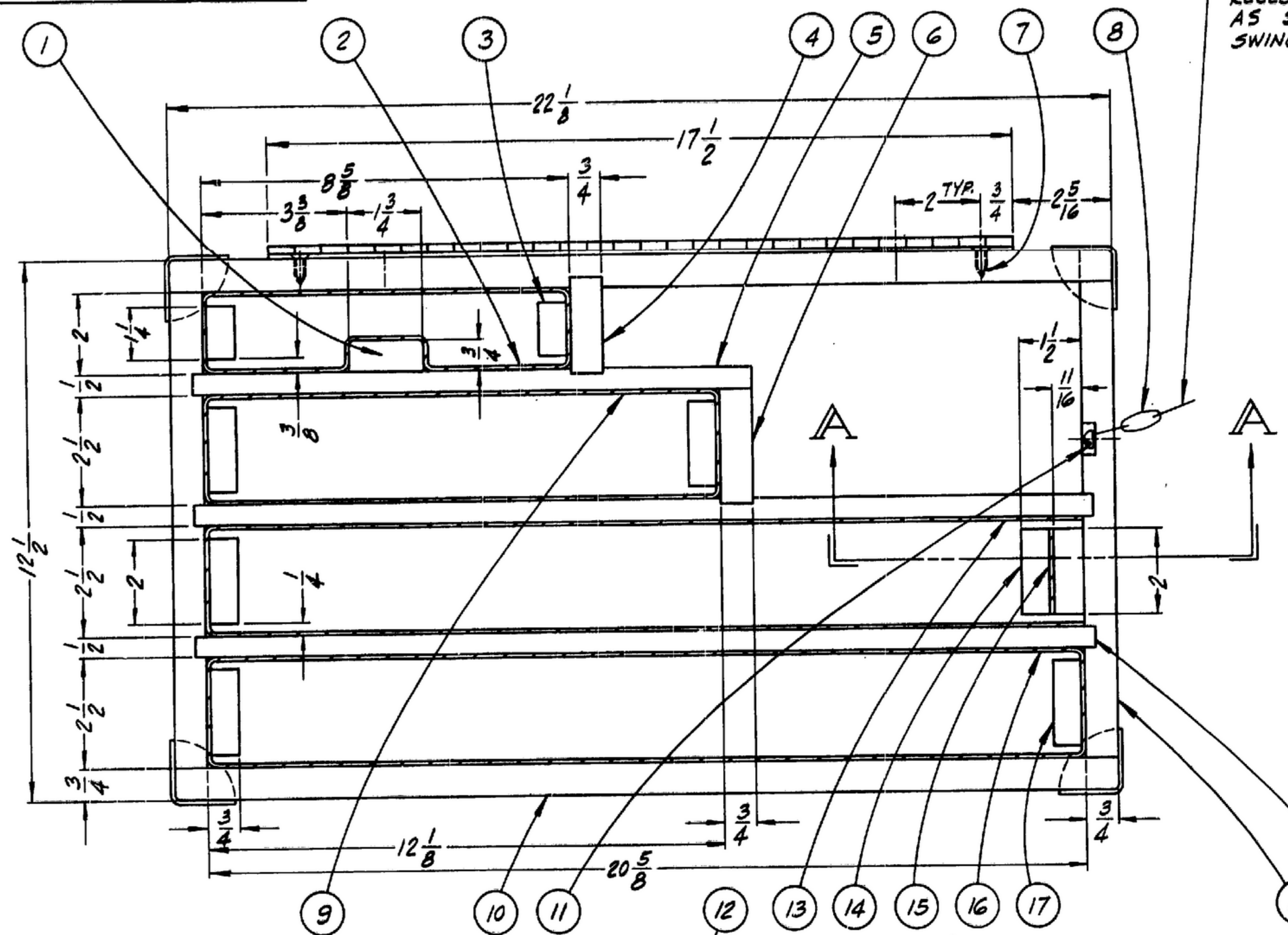


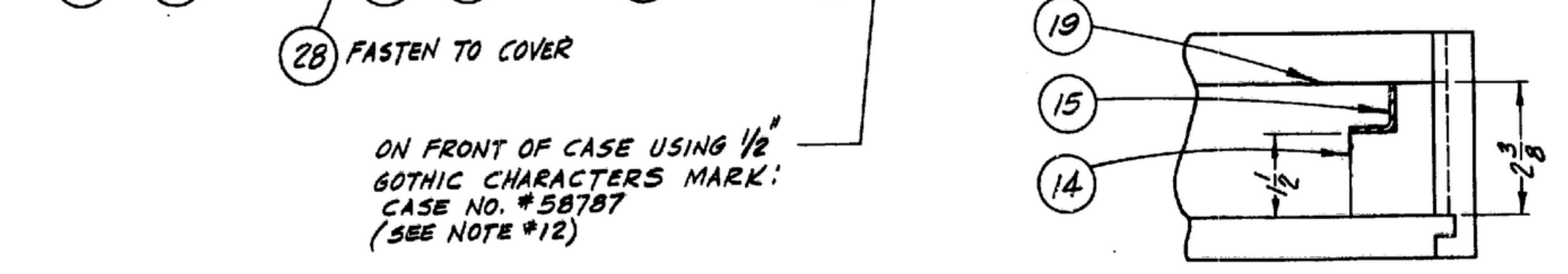
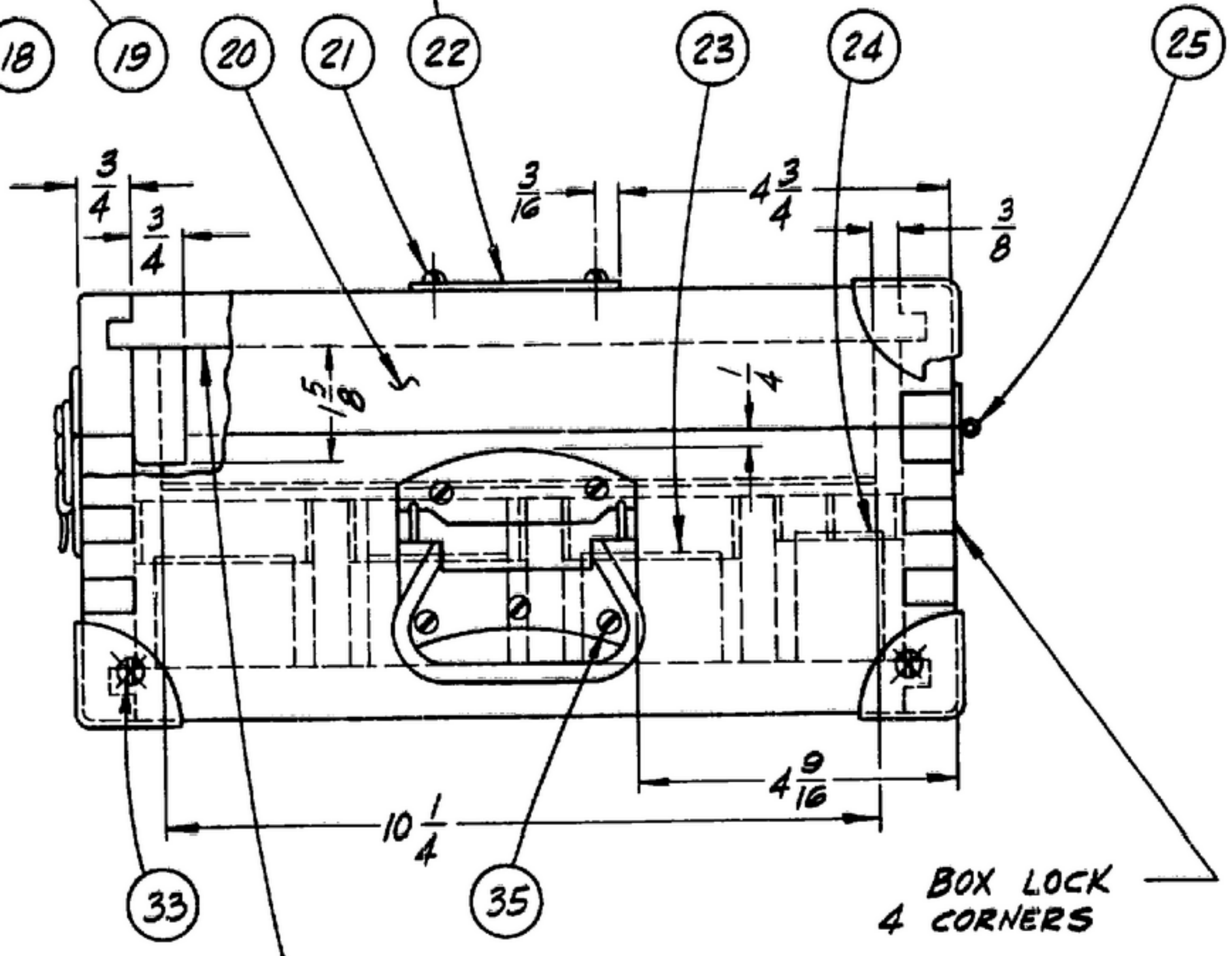
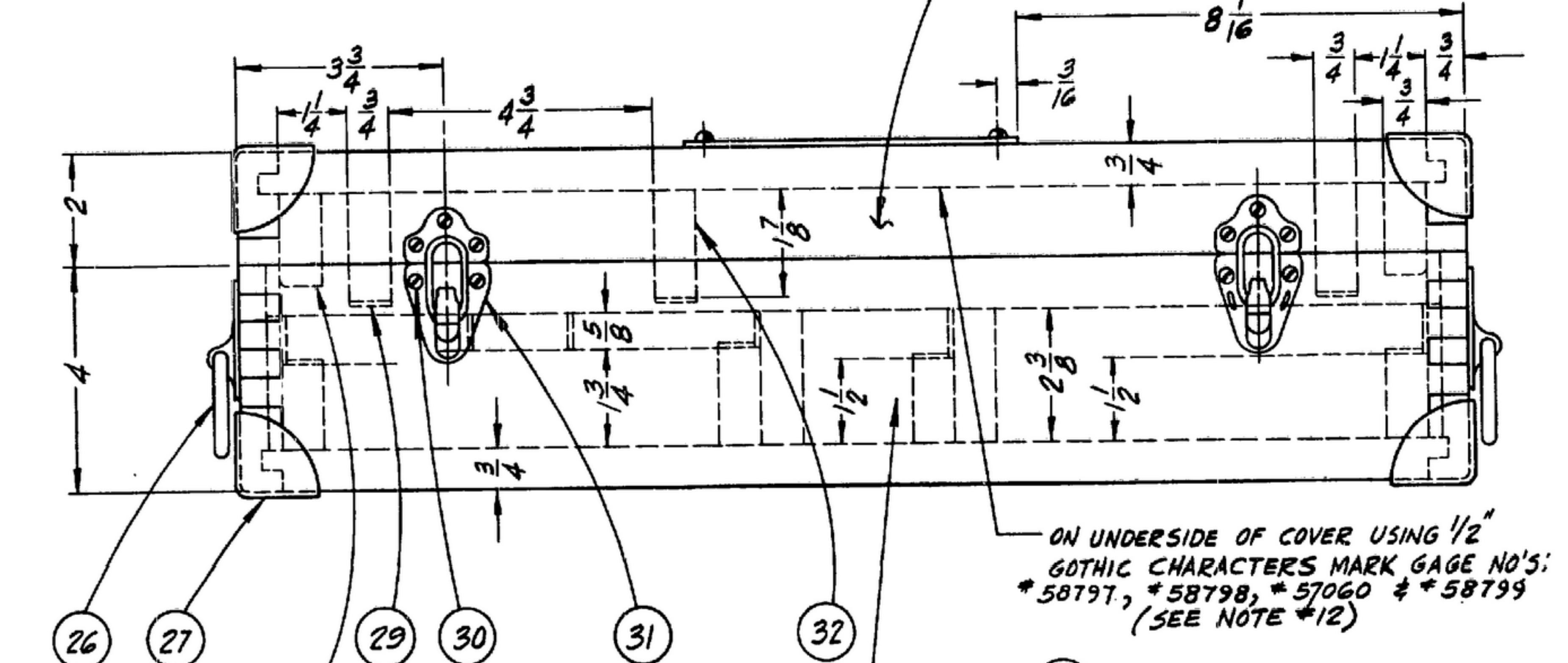
NOTES: WHEN APPROVED BY THE ENGINEER, DIMENSIONS AND OTHER DATA ARE TO BE USED FOR ALL PURPOSES UNLESS OTHERWISE SPECIFIED IN THIS DRAWING. DIMENSIONS ARE TO UNLESS OTHERWISE SPECIFIED IN THIS DRAWING. DIMENSIONS ARE TO UNLESS OTHERWISE SPECIFIED IN THIS DRAWING.

NOTE:
CHAIN AND ITS FASTENING TO BE RECESSED IN SIDES OF CASE & COVER AS SHOWN - CHAIN MUST CONFINE SWING OF COVER TO 120° MAX.

NOTES: CONT'D.
11. CASE AND MARKINGS ON THE CASE SHALL MEET THE REQUIREMENTS OF SPEC. MIL-G-13451.
12. AFTER FINISH IS APPLIED, FILL CHARACTERS WITH WHITE PAINT - THEN APPLY ONE COAT OF COLORLESS VARNISH TYPE II PER SPEC. MIL-V-173. CHARACTERS SHALL MEET THE TEST REQUIREMENTS OF SPEC. MIL-M-13231.
13. FINISHES ARE PER SPEC. MIL-F-14072.
14. ALL INSIDE DIMENSIONS ARE TO WOOD SURFACES.



SCALE: 1=1 (SEE NOTE #5)



ON FRONT OF CASE USING 1/2" GOTHIC CHARACTERS MARK: CASE NO. #58787 (SEE NOTE #12)

ON UNDERSIDE OF COVER USING 1/2" GOTHIC CHARACTERS MARK GAGE NO'S: *58797, *58798, *57060 & *58799 (SEE NOTE #12)

- NOTES:
- HIGH DENSITY PLYWOOD PER SC-A-47794-3.
 - HARD WOOD, CLEAR, PER SC-A-47794-21.
 - ALL JOINTS SHALL BE SECURELY BONDED WITH ADHESIVE PER SPEC. MIL-A-397, TYPE I, CLASS 1, APPLIED PER SPEC. MIL-A-5433.
 - BEFORE ASSEMBLY OF HARDWARE, PADDING, & NAMEPLATE, ALL INSIDE & OUTSIDE SURFACES OF CASE SHALL BE FINISHED AS FOLLOWS: SAND AND APPLY ONE COAT OF WOOD SEALER PER SPEC MIL-5-13518 AND ONE COAT OF CLEAR SPAR VARNISH PER SPEC TT-V-119.
 - ALUMINUM ALLOY 245-T4 PER SPEC QQ-A-362. BLACK ANODIZE PER SPEC MIL-A-8625. ENGRAVE USING GOTHIC STYLE CHARACTERS AND FILL WITH WHITE PAINT.
 - EXCELSIOR HARDWARE CO. - CAT. NO. #49110 - BRIGHT NICKEL FINISH.
 - STANLEY HARDWARE CO. - CAT. NO. #1205, SIZE 3 1/4, BRIGHT NICKEL FINISH.
 - STANLEY HARDWARE CO. - CAT. NO. #311 - 1 1/4 WIDE - BRIGHT NICKEL FINISH.
 - J. H. SESSIONS & SON ARMED FORCES HARDWARE CAT. NO. S-966-4A-ZN5 FINISH PER SPEC. 72-33 TABLE #2 TYPE I (ZINC COATING .0005 THICK).
 - FELT PER SPEC. C-F-206, SECURELY BONDED IN PLACE WITH Pliobond #30 AS MADE BY GOODYEAR TIRE & RUBBER CO. - AKRON OHIO. (OR APPROVED EQUIVALENT).

QTY	PART NO.	DESCRIPTION	MATL	FINISHED SIZE	NOTE
35	10	-35 FLAT HD. WOODSCR.	STAINLESS STEEL	#8 x 3/4 L.G.	+
34	2	-34 TOP & BOTTOM	PLYWOOD	3/4 x 11 3/4 x 21 3/8	1
33	24	-33 FLAT HD. WOODSCR.	STAINLESS STEEL	#6 x 1/2 L.G.	+
32	3	-32 TRAP BLOCK	HARDWOOD	3/4 x 1 1/8 x 10 1/4	2
31	2	-31 DRAWBOLT	STEEL	---	6
30	12	-30 FLAT HD. WOODSCR.	STAINLESS STEEL	#6 x 5/8 L.G.	+
29	3	-29 PAD	FELT	1/16 x 3/4 x 10 1/4	10
28	2	-28 COVER ALIGNMENT BLOCK	HARDWOOD	3/4 x 3/4 x 1 5/8	2
27	8	-27 BOX CORNER	STEEL	1 1/2"	9
26	2	-26 CHEST HANDLE	STEP	#3 1/4	7
25	1	-25 CONTINUOUS HINGE	STEE	1/4 W. x 17 1/2	8
24	2	-24 PAD	FELT	1/16 x 3/4 x 1 1/4	10
23	5	-23 PAD	FELT	1/16 x 3/4 x 2	10
22	1	-22 NAMEPLATE	ALUMINUM	3/4 x 3 x 6	5
21	4	-21 ROUND HD. WOODSCR.	STAINLESS STEEL	#6 x 1/2 L.G.	+
20	2	-20 ENDS - COVER	PLYWOOD	3/4 x 2 x 12 1/2	1
19	2	-19 SPACER	HARDWOOD	1/2 x 2 3/8 x 21 1/8	2
18	2	-18 ENDS - CASE	PLYWOOD	3/4 x 4 x 12 1/2	1
17	5	-17 REST BLOCK	HARDWOOD	3/4 x 1 1/2 x 2	2
16	1	-16 PAD	FELT	1/16 x 7/8 x 4 1/2	10
15	1	-15 PAD	FELT	1/16 x 1 3/4 x 2	10
14	1	-14 TRAP BLOCK	HARDWOOD	1/16 x 2 x 2 3/8	2
13	1	-13 PAD	FELT	1/16 x 7/8 x 4 1/4	10
12	2	-12 SIDES - COVER	PLYWOOD	3/4 x 2 x 22 1/8	1
11	2	-11 ROUND HD. WOODSCR.	STAINLESS STEEL	TO SUIT	+
10	2	-10 SIDES - CASE	PLYWOOD	3/4 x 4 x 22 1/8	1
9	1	-9 PAD	FELT	1/16 x 7/8 x 2 1/2	10
8	1	-8 CHAIN TO SUIT	STEEL PL.	AS REQ'D.	+
7	18	-7 FLAT HD. WOODSCR.	STAINLESS STEEL	#6 x 3/4 L.G.	+
6	1	-6 SPACER	---	3/4 x 2 3/8 x 2 3/8	2
5	1	-5 SPACER	---	1/2 x 2 3/8 x 1 3/8	2
4	1	-4 SPACER	---	3/4 x 2 1/4 x 2 3/8	2
3	2	-3 REST BLOCK	HARDWOOD	3/4 x 1 1/4 x 1 3/4	2
2	1	-2 PAD	FELT	1/16 x 9/8 x 2 1/2	10
1	1	SM-D-58787-1 TRAP BLOCK	HARDWOOD	5/8 x 3/4 x 1 1/4	2

UNLESS OTHERWISE SPECIFIED DIMENSIONS ARE IN INCHES TOLERANCES ON FRACTIONS DECIMALS ANGLES ± 1/32 ± .005 ±		MOTOROLA INC.	CASE FOR GAGES R-390A/URR	DEPARTMENT OF THE ARMY SIGNAL CORPS ENGINEERING LABORATORIES FORT MONMOUTH NEW JERSEY
ORDER NO. 14385-PC-58-A1(51)	SIGNAL CORPS	REVIEWED XXX		
DRAWN J. MACH	DATE 9-30-58	APPROVED muH	SM-D-58787	
CHECKED E.J.P.	DATE 30 SEPT. 1958	SCALE FULL	WHEN REFERRING TO THIS DRAWING STATE DRAWING NO., APPLICABLE ISSUE SYMBOL, IF ANY, AND DATE.	