

FOR INFORMATION ONLY, CONTRACTOR MAY AT HIS OPTION DEVIATE FROM THESE PROCESS DETAILS.

NOTES:  
 SUPPLIER FOR: (OR APPROVED EQUIVALENT)  
 ITEM 78: SPRING ACTION ELECTRIC CORP. DIV OF PARAGON RUBBER CO. EAST HAMPTON, MASS.  
 ITEM 79: BELDEN MFG CO. CHICAGO, ILLINOIS  
 ITEMS 5, 6 & 8: OHMITE MFG CO. SKOKIE, ILL.  
 ITEMS 7 & 58: ALLEN BRADLEY CO. MILWAUKEE, WISC.  
 ITEM 9: P. R. MALLORY & CO. INDIANAPOLIS, IND.  
 ITEMS 10 & 11: THORDARSON MEISSNER MFG, MT CARMEL, ILL.  
 ITEMS 12, 13 & 14: RADIO CORPORATION OF AMERICA, CHICAGO, ILL.  
 ITEMS 15, 16 & 17: WESTON ELECTRICAL INSTRUMENT CORP. NEWARK, N. J.  
 ITEMS 18, 19, 20, 35 & 36: CINCH MFG CO. CHICAGO, ILL.  
 ITEMS 21 & 22: DRAKE MFG CO. CHICAGO, ILLINOIS  
 ITEMS 23 & 24: LITTEL FUSE INC. DES PLAINES, ILL.  
 ITEMS 25, 56 & 57: CUTLER-HAMMER INC. MILWAUKEE, WISC.  
 ITEM 26: GENERAL ELECTRIC CO. SPECIALTY ELECTRONICS 77: COMPONENTS DEPT. SYRACUSE, N. Y.  
 ITEMS 27, 28, 29, 30 & 65: AMPHENOL ELECTRONICS CORP. CHICAGO, ILL.  
 ITEM 31: H. DAVIES CO. CHICAGO, ILLINOIS  
 ITEMS 32 & 33: WALSCO ELECTRONICS MFG CO. DIV OF TEXTRON, LOS ANGELES, CALIF.  
 ITEMS 36, 37, 38, 40, 45, 49 & 54: SHAKEPROOF, DIV. ILLINOIS TOOL WORKS, ELGIN, ILLINOIS  
 ITEMS 39, 41, 42, 43, 44, 46, 47, 48, 50, 51, 52, 53 & 55: HERCULES FASTENER CO. CHICAGO, ILLINOIS  
 ITEM 59: GATES WASHER CO. CHICAGO, ILLINOIS  
 ITEM 60: ELASTIC STOP NUT CORP OF AMERICA, UNION, N. J.  
 ITEM 61: PARKER-KALON CORP. CLIFTON, N. J.  
 ITEM 62, 63 & 64: BENTLEY-HARRIS MFG CO. CONSHOHOCKEN, PENN.  
 ITEMS 66, 67 & 68: CONSOLIDATED WIRE & ASSOC CO. CHICAGO, ILL.

- LEADS WITH COLOR IDENTIFIED ARE BREAKOUTS FROM TRANSFORMERS T1 & T2.
- LETTERED LEADS ARE JUMPER WIRES (SEE TABLE "A") SHOWN BY SINGLE LINE, LETTERED AT BOTH ENDS FOR CLARIFICATION.
- NUMBERED LEADS ARE BREAKOUTS FROM CABLE.
- WIRE SHALL BE TYPE (S) DRAWN AND ANNEALED, TINNED PER SPEC MIL-W-3861.
- RUN WIRES LOOSE AND DRESSED BACK AGAINST THE CHASSIS IN THE MOST CONVENIENT MANNER.
- USING ITEM 75, TAPE LEADS FROM TRANSFORMERS & JUMPERS WHERE EVER PRACTICAL, MAKING RUNNING LOCK STITCH HAVING 1/2 TO 3/4 INCH SPACING WITH DOUBLE STITCHES AT START AND FINISH OF LACING.
- USE ITEM 62 TO INSULATE LEADS FROM METERS & TO INSULATE LEADS FROM CONNECTOR
- WIRE LENGTHS INDICATED IN MATL LIST ARE PRELIMINARY AND SHALL BE CUT TO PROPER LENGTH IN ASSEMBLY.
- ITEM 42 TO BE FINISHED GRAY WITH CABINET.
- ELECTRICAL CONNECTIONS SHALL BE SOLDERED USING ITEM 76.
- LACING TAPE, TYPE P, WAXED, CLASS 2 PER SPEC MIL-T-713.

ITEM	QTY	SIG	PART NO.	DESCRIPTION	MATL-FIN	FIN SIZE	SHT	NOTES
79	72	#	-79	CORD #8452			6	1
78	1		-78	CONN # ALLIED 108			6	1
77	1		-77	CONNECTOR #GE-4317-1			6	1
76	AS REQD		-76	SOLDER .062 DIA Sn60WARP3			28A	11
75	AS REQD		-75	TAPE, LACING (WHT)	NYLON		2	12
74	1 1/2"		-74	WIRE #16			2	5
73	3"		-73	MW-C16(19)UB			2	
72	6 1/4"		-72	MW-C16(19)UR			2	
71	8 1/4"		-71	MW-C22(7)UO			2	
70	10 1/4"		-70	MW-C22(7)UR			2	
69	6		-69	MW-C22(7)UB	MIL-W-76		2	
68	7 1/4"		-68	#16-B-5-1 GY-GRN-			4	1
				BRN				
67	36 1/4"		-67	#20-0 BLK			6	1
66	36 1/4"		-66	WIRE #20-2 RED			6	1
65	7 1/4"		-65	CABLE RG-58/U			6	1
64			-64	TUBING, 5/16 DIA	VINYL		6	1
63			-63	TUBING, 1/2 DIA	VINYL		6	1
62	AS REQD		-62	INSULATION, SLV			2	1
				GRADE AC-1 #BH-1151				
61	2		-61	SCR (SELF-TAPPING #2			2	1
				RH, TYPE Zx3/16 LG)				
60	12		-60	NUT, CLINCH #C3-62			2	1
59	1		-59	WASH. FLATR/Bx5/Bx.020)	STL-CAD PL		2	1
58	1		-58	NUT, (#3/8-32x3/32 HEX)			2	1
				#M2786				
57	1		-57	RING, LOCKING #29-761			2	1
56	2		-56	NUT, HEX #B15-254F1			2	1
55	6	SM-D-58791	-55	NUT, (#4-40x3/32 HEX)	STL-CAD PL		2	1

ITEM	QTY	SIG	PART NO.	DESCRIPTION	MATL-FIN	FIN SIZE	SHT	NOTES
54	13		-54	LK WASH., (#4 INT TOOTH			2	1
				#1204-00)				
53	3		-53	MS, (#4-40x1/2 LG SLOT. FH)			2	1
52	4		-52	MS, (#4-40x3/8 LG SLOT.			2	1
				BIND. HEAD)				
51	6		-51	MS, (#4-40x1/2 LG SLOT.			2	1
				BIND. HEAD)				
50	5		-50	NUT, (#8-32x5/16x1/8 HEX)			2	1
49	5		-49	LK WASH., (#8 INT TOOTH)			2	1
				#1208-00				
48	1		-48	MS, (#8-32x2 LG SLOT. BIND.			2	1
				HEAD)				
47	4		-47	MS, (#8-32x5/16 LG SLOT.			2	1
				BIND. HEAD)				
46	8		-46	NUT, (#6-32x3/32 HEX)			2	1
45	7		-45	LK WASH., (#6 INT TOOTH)			2	1
				#1206-00				
44	4		-44	MS, (#6-32x5/16 LG SLOT. FH)			2	1
43	4		-43	MS, (#6-32x5/16 LG SLOT.			2	1
				BIND. HEAD)				
42	12		-42	MS, (#6-32x1/2 LG SLOT.			2	1&10
				BIND. HEAD)				
41	4		-41	NUT, (#3-56x3/16x1/16 HEX)			2	1
40	4		-40	LK WASH., (#3 INT TOOTH)			2	1
				#1203-00				
39	4		-39	MS, (#3-56x3/8 LG SLOT. RH)	STL CAD PL		2	1
38	6		-38	#2160-08-00			2	1
37	1		-37	#2101-06-00			2	1
36	4		-36	TERM., LOCKING #2101-04-00			2	1
35	4		-35	TERM., STANDOFF #750			2	1
34	3		-34	TERM., STANDOFF #756			2	1
33	4		-33	FOOT, RUBBER #3330-2			2	1
32	4		-32	GROMMET #3340-3			2	1
31	1		-31	KNOB #1450-W			2	1
30	1		-30	#26-218			6	1
29	2		-29	UG-88U			6	1
28	1		-28	AN-31068-145-2P			6	1
27	1		-27	CONNECTOR AN-3102A-145-2S			2	1
26	1		-26	MOTOR BASE, MINIATURE,			2	1
				MALE #GE-4343-5				
25	1		-25	SWITCH #8381K8			2	1
24	2		-24	FUSE #312.75			2	1
23	2		-23	HOLDER, FUSE #342001			2	1
22	1		-22	PILOT DOME #25PF RED			2	1
21	1		-21	PILOT LIGHT ASSY #10INS			2	1
20	2		-20	SHIELD #12564			2	1
19	1		-19	SOCKET #12272			2	1
18	2		-18	SOCKET #13723			2	1
17	1		-17	0-300V. D.C. #506			2	1
16	1		-16	0-10 V. A.C. #517			2	1
15	1		-15	METER 0-150 V. A.C. #517			2	1
14	1		-14	TUBE O82			2	1
13	1		-13	TUBE O42			2	1
12	1		-12	TUBE 5Y3 GT			2	1
11	1		-11	CHOKE #T20C53			2	1
10	1		-10	TRANSFORMER #T24R01-U			2	1
9	1		-9	CAPACITOR #FP-444			2	1
8	1		-8	20 #1002			2	1
7	1		-7	#GB-5635			2	1
6	1		-6	RESISTOR, 3K0			2	1
				#BROWN DEVIL				
5	1		-5	RHEOSTAT, MOD #H0162			2	1
4	1		-4	NAMEPLATE			032x3x1 7/16	4
3	1		-3	CABINET			9x7x.090	4
2	1		-2	PANEL			9x7x1/8	3
1	1		-1	CHASSIS	AL ALLOY		6 1/2x7 1/2x.090	5

UNLESS OTHERWISE SPECIFIED  
 DIMENSIONS ARE IN INCHES  
 TOLERANCES ON FRACTIONS DECIMALS ANGLES  
 ± 1/64 ±.010 ±0°30'

DRAWN J.J.L.  
 DATE 18 NOV 58

APPROVED XXX  
 DATE 18 NOV 58

SC-GL-57655

ORDER NO. 14385-PC-58-A1  
 SIGNAL CORPS

REVIEWED XXX

APPROVED J.F.K.  
 DATE 18 NOV 58

POWER SUPPLY FOR B.F.O. ELECTRICAL & MECHANICAL INTERCHANGEABILITY GAGES

DEPARTMENT OF THE ARMY  
 SIGNAL CORPS ENGINEERING LABORATORIES  
 FORT MONMOUTH NEW JERSEY

SM-D-58791  
 SHEET 1 OF 7 SHEETS

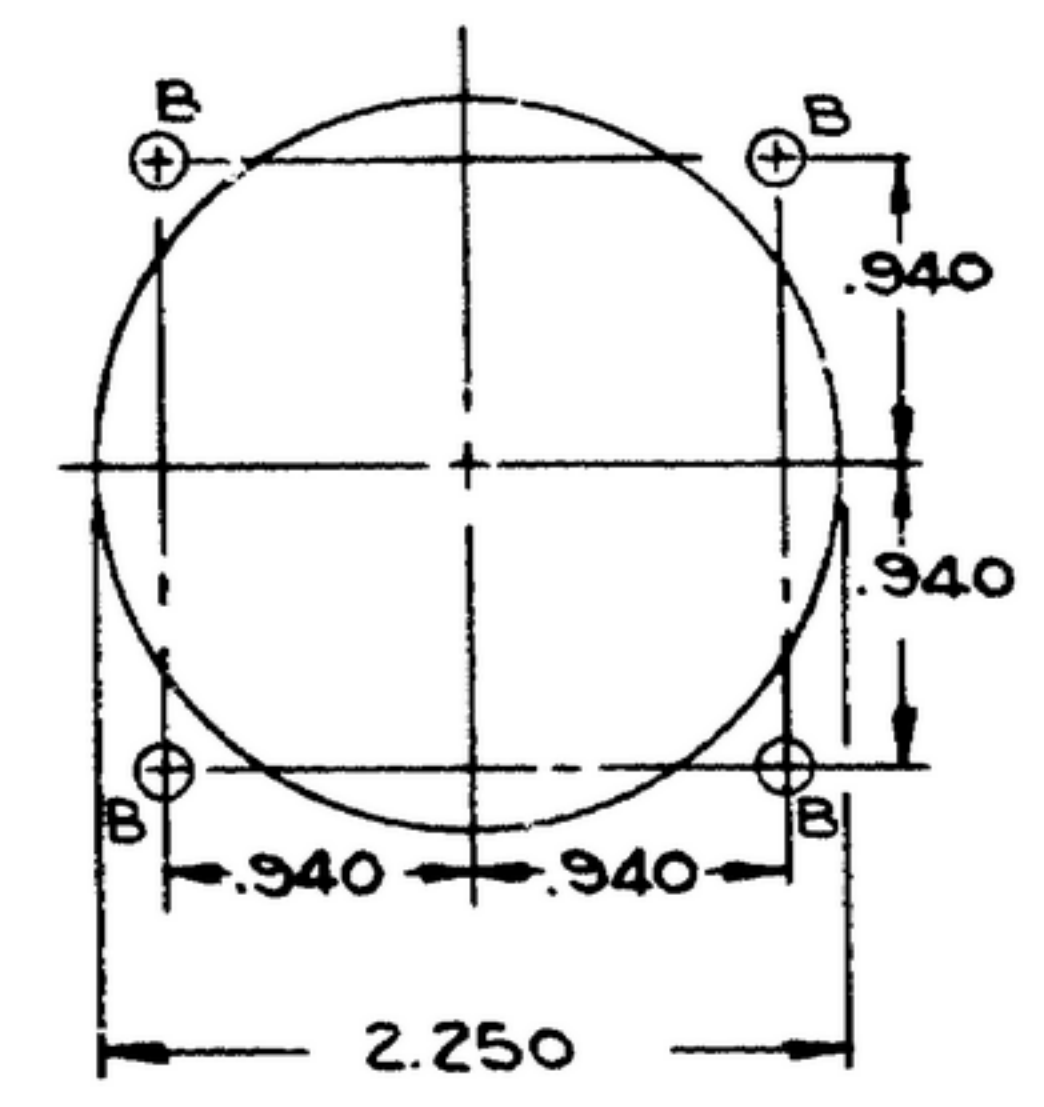
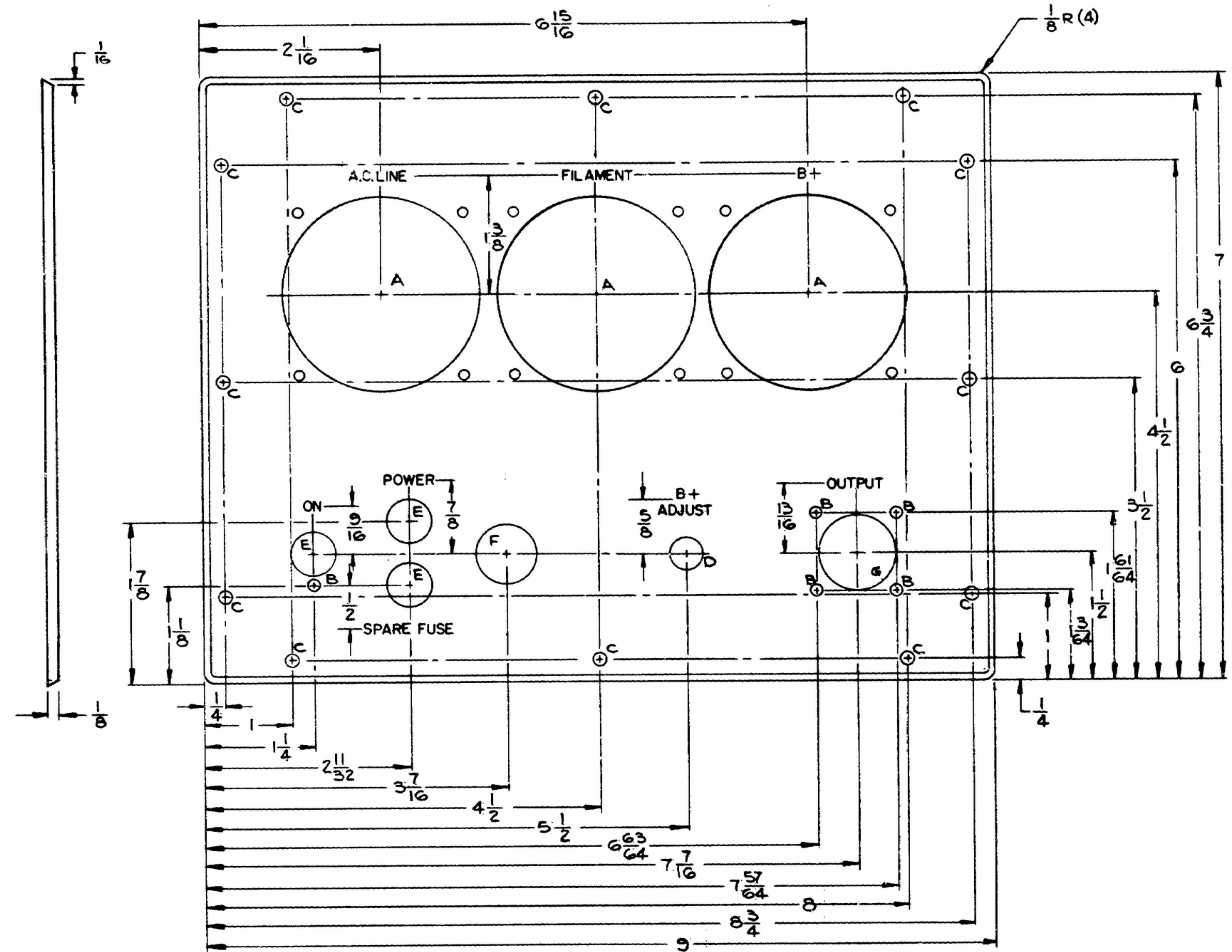
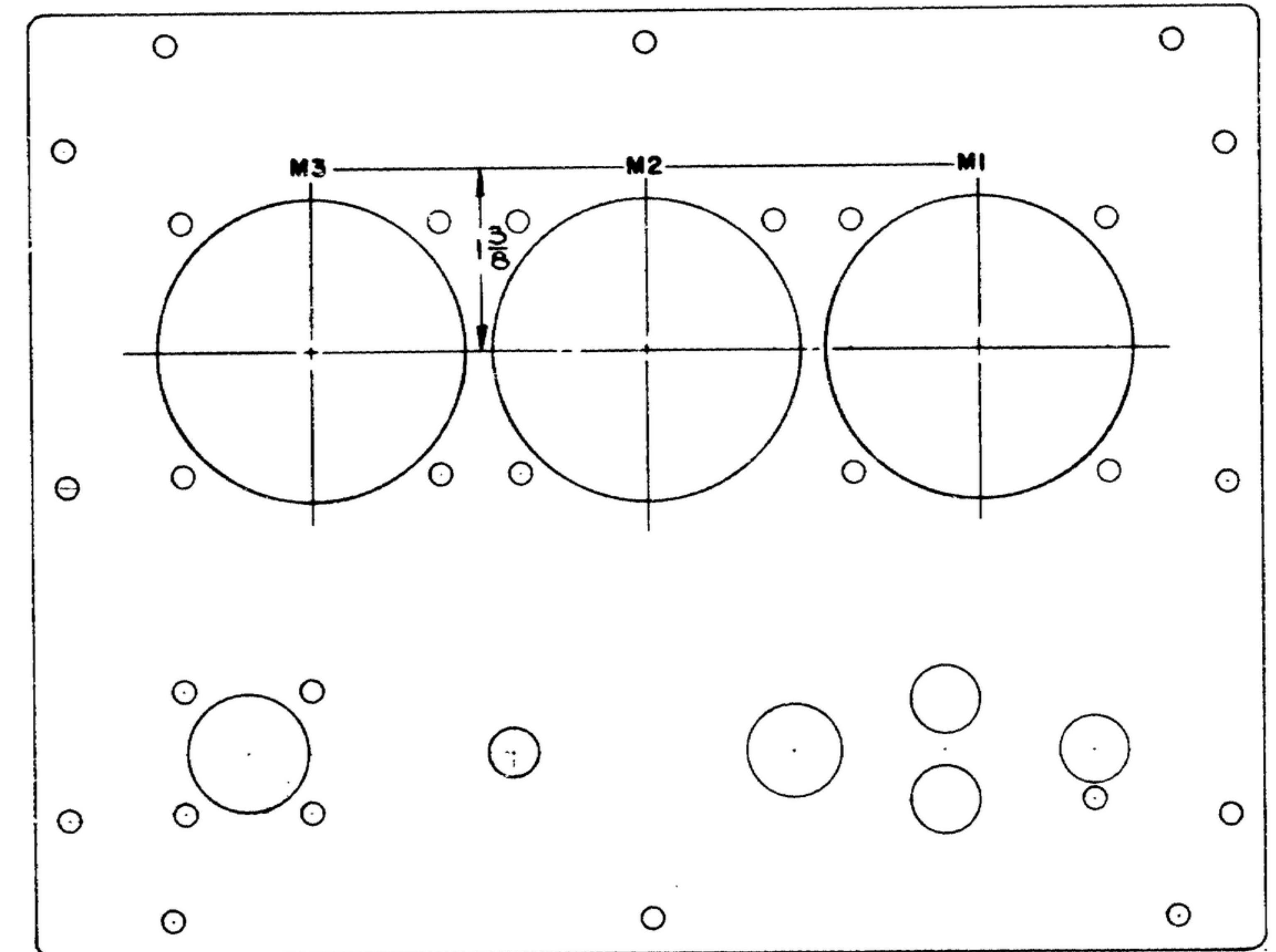
WHEN REFERRING TO THIS DRAWING STATE DRAWING NO., APPLICABLE ISSUE SYMBOL, IF ANY, AND DATE.



C-3336-0-1038

ORIG SYM 155 A	REVISIONS	17 Oct 58
SYL	DESCRIPTION	DATE APPROVAL

FOR INFORMATION ONLY, CONTRACTOR MAY AT HIS OPTION DEVIATE FROM THESE PROCESS DETAILS.



DETAIL A

SYM	DESCRIPTION	QTY
A	SEE DETAIL A	3
B	1/8 DIA THRU	17
C	5/32 DIA THRU	12
D	3/8 DIA THRU	1
E	1/2 DIA THRU	3
F	11/16 DIA THRU	1
G	7/8 DIA THRU	1

(2) PANEL

MATL: AL ALLOY 5052 TEMPER H-34 PER SPEC QQ-A-318.  
 FINISH: CLEAN IN VAPOR OR SOLVENT TYPE DEGREASER  
 HOT DICHROMAT DIP (IRIDITE #14), PRIME WITH ONE COAT  
 ZINC CHROMATE PRIMER TYPE 2 PER SPEC MIL-P-6800  
 APPLIED PER SPEC MIL-P-6808. FINISH WITH SEMI-GLOSS  
 ENAMEL PER SPEC MIL-E-11857, CLASS B, MEET THE  
 REQUIREMENTS OF FED. SPEC TT-P-141, COLOR GRAY  
 #2410 PER FED. SPEC TT-C-595.

NOTES:

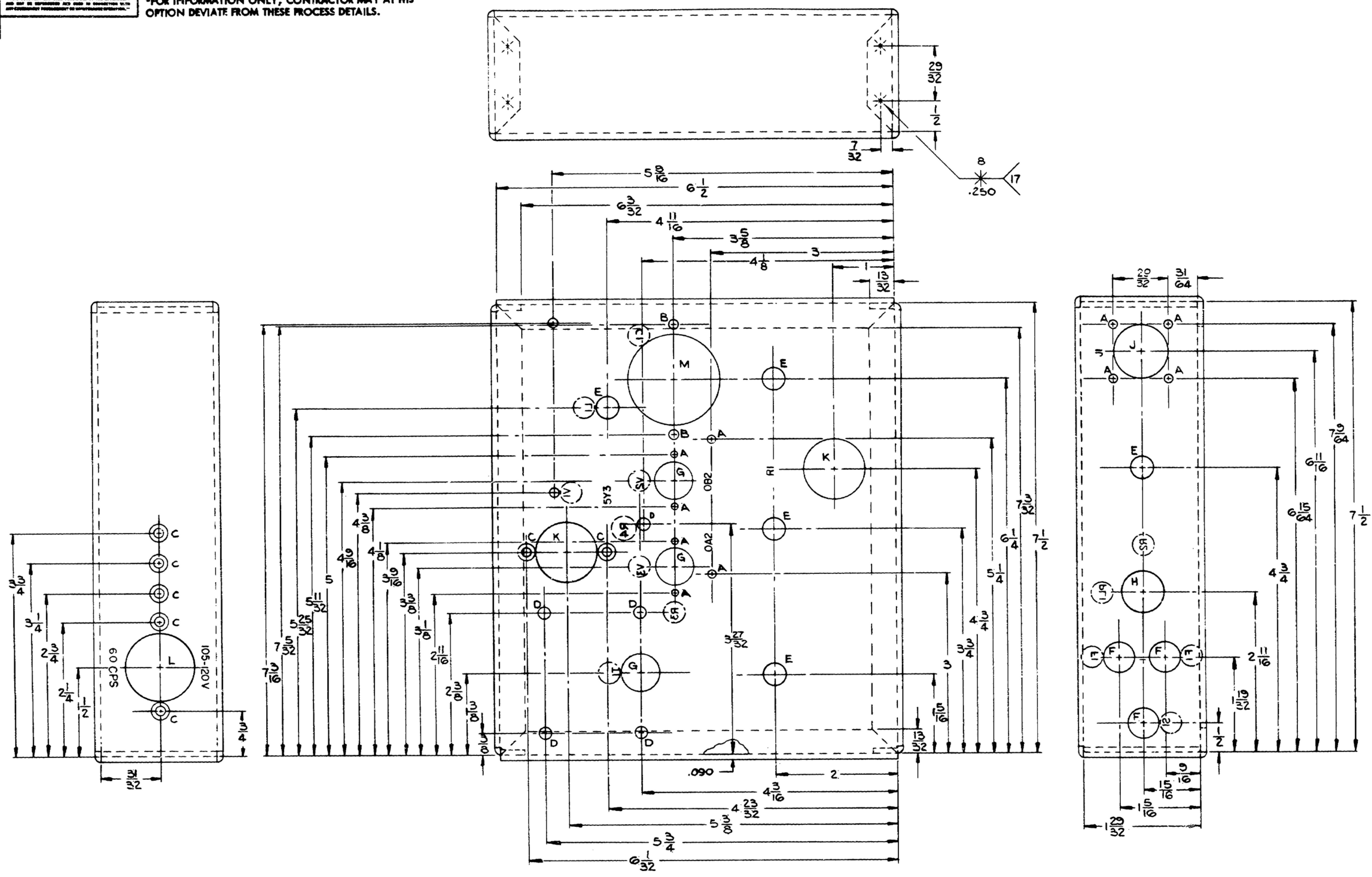
13. MARKINGS ARE TO BE:
  - A. ENGRAVED AFTER PAINTING.
  - B. 7/64 HIGH
  - C. SYMMETRICAL ABOUT THE RESPECTIVE CENTERLINES
  - D. FILLED WITH WHITE LACQUER SILK, AS SUPPLIED BY LAKE CHEMICAL, CHICAGO, ILL.
  - E. MARKING ON BACK OF PANEL TO BE 1/8 HIGH RUBBER STAMPED PERMANENT BLACK CONDENSED COVERCOATED WITH M.F.P. VARNISH #7475, AS SUPPLIED BY BROOKLYN VARNISH CO, BROOKLYN, N.Y.

ORDER NO.	14385-PC-58-A1	POWER SUPPLY FOR B.F.O. ELECTRICAL & MECHANICAL INTERCHANGEABILITY GAGES	DEPARTMENT OF THE ARMY SIGNAL CORPS ENGINEERING LABORATORIES FORT MONMOUTH NEW JERSEY
SIGNAL CORPS	REVIEWED XXX		
DRAWN E.D.H.	DATE 8 AUG 58	APPROVED [Signature]	SM-D-58791
CHECKED W.J.P. 14 JAN 59	DATE 8 AUG 58	SCALE 1/1	SHEET 3 OF 7 SHEETS



\*FOR INFORMATION ONLY, CONTRACTOR MAY AT HIS OPTION DEVIATE FROM THESE PROCESS DETAILS.

SYM	DESCRIPTION	DATE	APPROVAL
ORIG	SYM 155 A	REVISIONS	17 OCT 58



- 15. BENDING RADII 3/32
- 16. MARKINGS TO BE:
  - A. RUBBER STAMPED, PERMANENT BLACK, CONDENSED GOTHIC STYLE 1/8 HIGH.
  - B. COVERED WITH M. F. D. VARNISH #7873, AS SUPPLIED BY BROOKLYN VARNISH CO., BROOKLYN, N.Y.
  - C. SYMMETRICAL ABOUT THEIR RESPECTIVE CENTERLINES.
  - D. MARKING IN ARE INSIDE CHASSIS
- 17. SPOTWELD PER SPEC MIL-W-4858.

SYM	DESCRIPTION	QTY
A	1/8 DIA THRU	10
B	5/32 DIA THRU	4
C	.138 DIA 45° SINK 80° TO .279/.257	7
D	3/16 DIA THRU	5
E	3/8 DIA THRU	5
F	1/2 DIA THRU	3
G	5/8 DIA THRU	3
H	11/16 DIA THRU	1
J	7/8 DIA THRU	1
K	1 DIA THRU	2
L	1 1/8 DIA THRU	1
M	1 1/2 DIA THRU	1

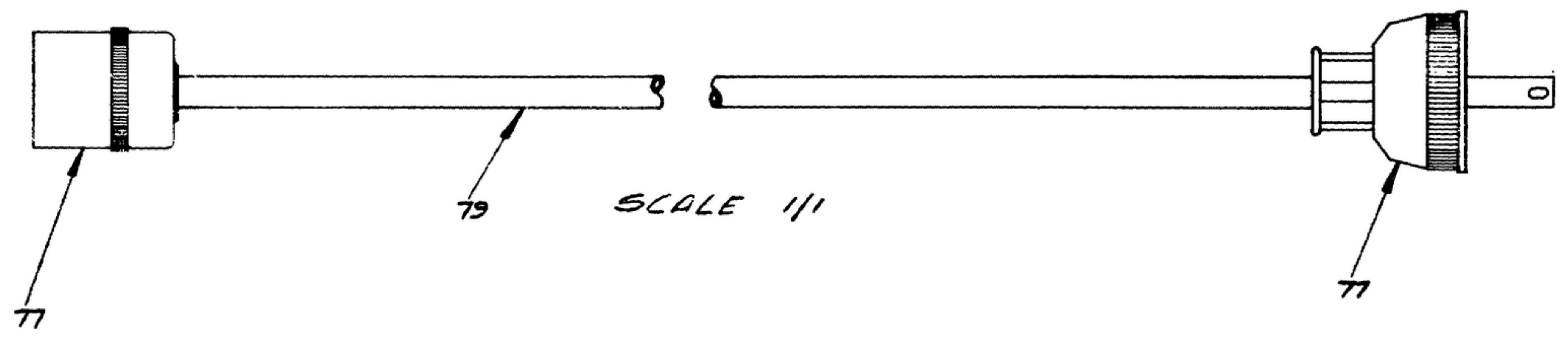
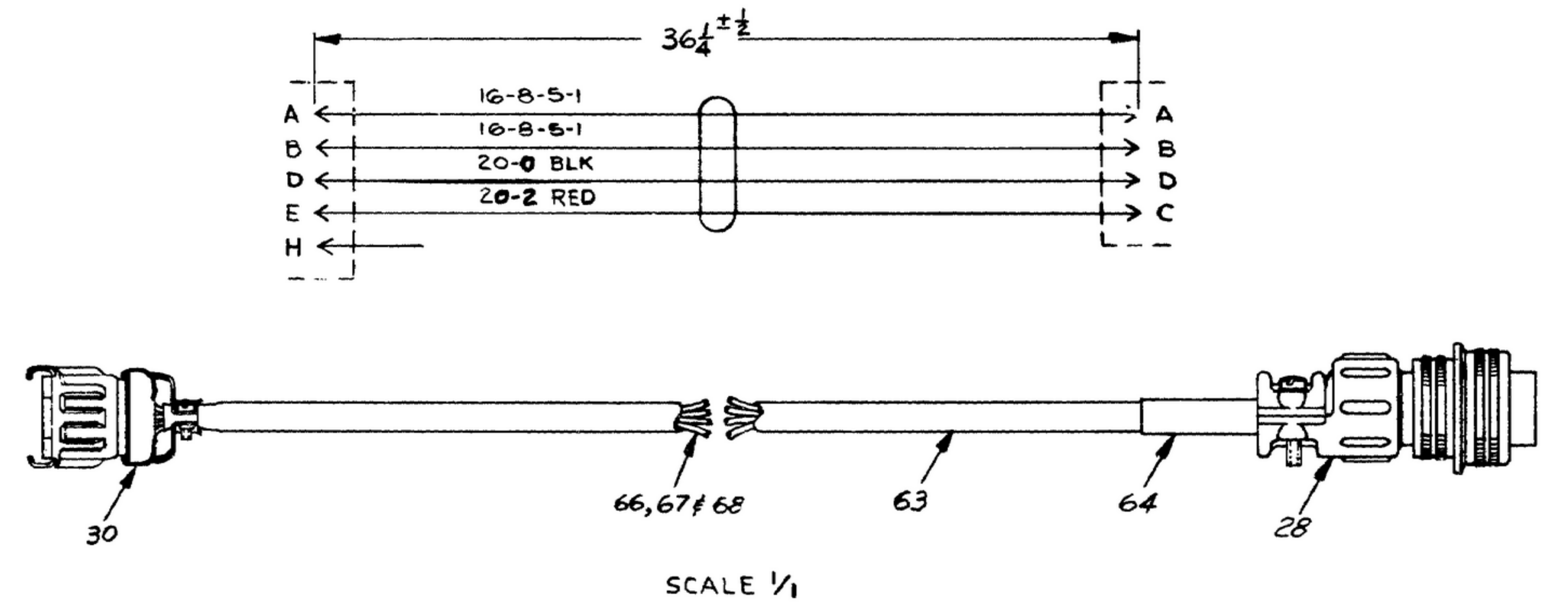
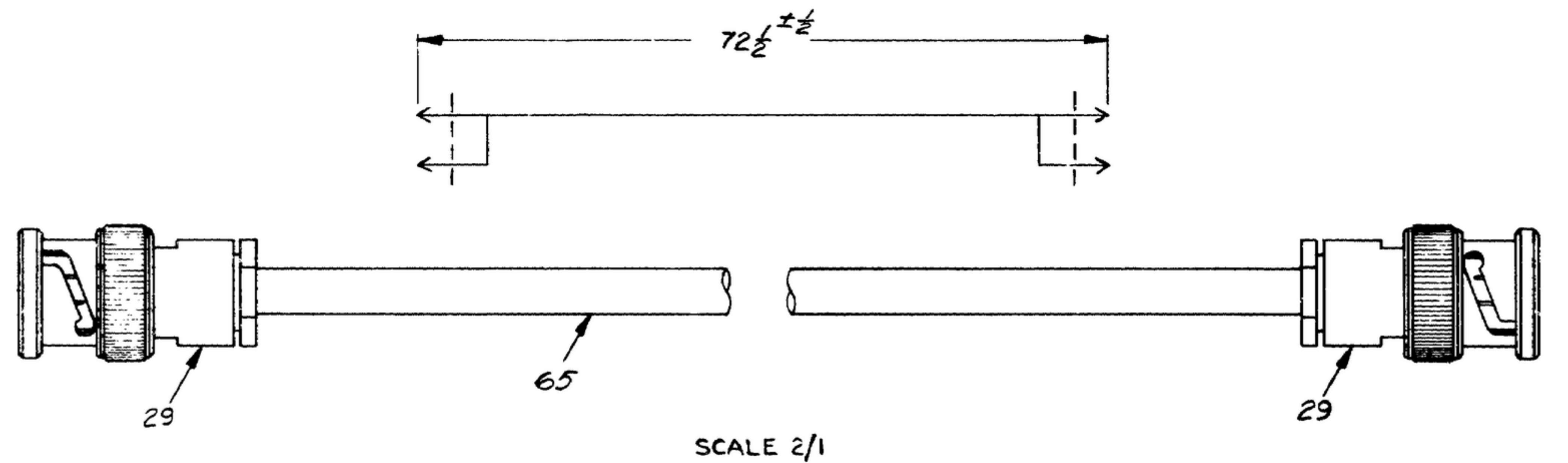
① CHASSIS  
 MATERIAL: AL ALLOY 5052, TEMPER H-34 PER SPEC QQ-A-318.  
 FINISH: ZINC PL., CL2, TYPE II PER SPEC QQ-Z-323.

REQD	PART NO.	DESCRIPTION	MATL.	MATL SPEC.
SEE TABLE FOR PART NO.		LIST OF MATERIAL		
UNLESS OTHERWISE SPECIFIED				
DIMENSIONS ARE IN INCHES				
TOLERANCES ON FRACTIONS DECIMALS ANGLES				
± 1/64 ± .010 ± 0°30'				
DRAWN E.D.H.				
DATE 5 AUG 58				
CHECKED W.J.P. 18 JAN 59				
APPROVED [Signature] 14 JAN 59				
NEXT ASSY USED ON		NEXT ARMY USED ON		APPLICATION
				POWER SUPPLY FOR B.F.O. ELECTRICAL & MECHANICAL INTERCHANGEABILITY GAGES
MOTOROLA INC. 14385-PC-58-A1 SIGNAL CORPS				
REVIEWED XXX				
APPROVED [Signature]				
DATE 5 AUG 58				
SCALE 1/1				
DEPARTMENT OF THE ARMY SIGNAL CORPS ENGINEERING LABORATORIES FORT MONMOUTH NEW JERSEY				SM-D-58791
				SHEET 5 OF 7 SHEETS

UNLESS OTHERWISE SPECIFIED, DIMENSIONS ARE GIVEN IN INCHES AND DECIMALS THEREOF. DIMENSIONS IN FRACTIONS SHALL BE TO NEAREST 1/32 INCH. DIMENSIONS IN DECIMALS SHALL BE TO NEAREST 0.001 INCH. DIMENSIONS IN DECIMALS SHALL BE TO NEAREST 0.001 INCH. DIMENSIONS IN DECIMALS SHALL BE TO NEAREST 0.001 INCH. DIMENSIONS IN DECIMALS SHALL BE TO NEAREST 0.001 INCH.

\*FOR INFORMATION ONLY, CONTRACTOR MAY AT HIS OPTION DEVIATE FROM THESE PROCESS DETAILS.

ORG SYM 185 A	REVISIONS	17 OCT 58
SYM.	DESCRIPTION	DATE APPROVAL



UNLESS OTHERWISE SPECIFIED	ROTORDOLA INC.
DIMENSIONS ARE IN INCHES	ORDER NO. 14385-PC-58-A1
TOLERANCES ON FRACTIONS DECIMALS ANGLES	SIGNAL CORPS
± 1/32 ± .010 ± 0°30'	REVIEWED XXX
DRAWN C.W. 280	APPROVED R.J. 24
DATE 24 SEPT 58	DATE 24 SEPT 58
CHECKED W.J.P. 14 JAN 59	DATE 24 SEPT 58
APPROVED [Signature]	SCALE
APPLICATION	

DEPARTMENT OF THE ARMY SIGNAL CORPS ENGINEERING LABORATORIES FORT MONMOUTH NEW JERSEY
SM-D-58791 SHEET 6 OF 7 SHEETS

6396-B-4951

