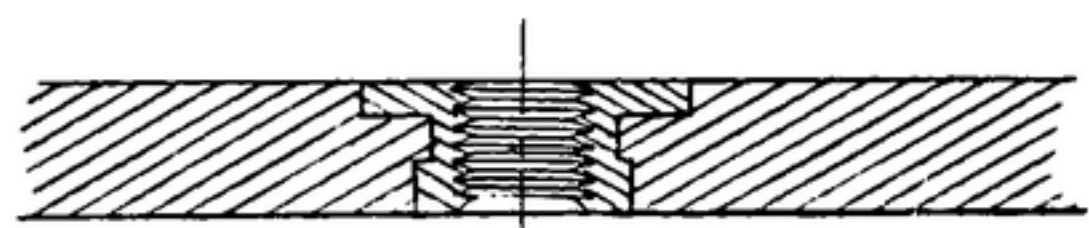


NOTICE: THESE GOVERNMENT DRAWINGS, SPECIFICATIONS, OR OTHER DATA ARE USED FOR ANY PURPOSE OTHER THAN IN CONNECTION WITH A SPECIFICALLY IDENTIFIED GOVERNMENT PROCUREMENT OPERATION. THE UNITED STATES GOVERNMENT THEREBY ASSUMES NO RESPONSIBILITY FOR ANY OMISSION, WHATEVER, AND THE FACT THAT THE GOVERNMENT HAS MADE AVAILABLE FOR PUBLICATION DOES NOT IMPLY THAT THE GOVERNMENT HAS MADE ANY STATEMENT OR OPINION AS TO THE ACCURACY, COMPLETENESS, OR QUALITY OF THE INFORMATION OR DATA. NO WARRANTY IS MADE BY THE GOVERNMENT FOR ANY OTHER PERSON OR CORPORATION, IN CONNECTION WITH THESE DRAWINGS OR SPECIFICATIONS, OR FOR THE USE OF ANY INFORMATION OR DATA THEREIN. NO WARRANTY IS MADE BY THE GOVERNMENT FOR THE USE OF ANY INFORMATION OR DATA THEREIN.

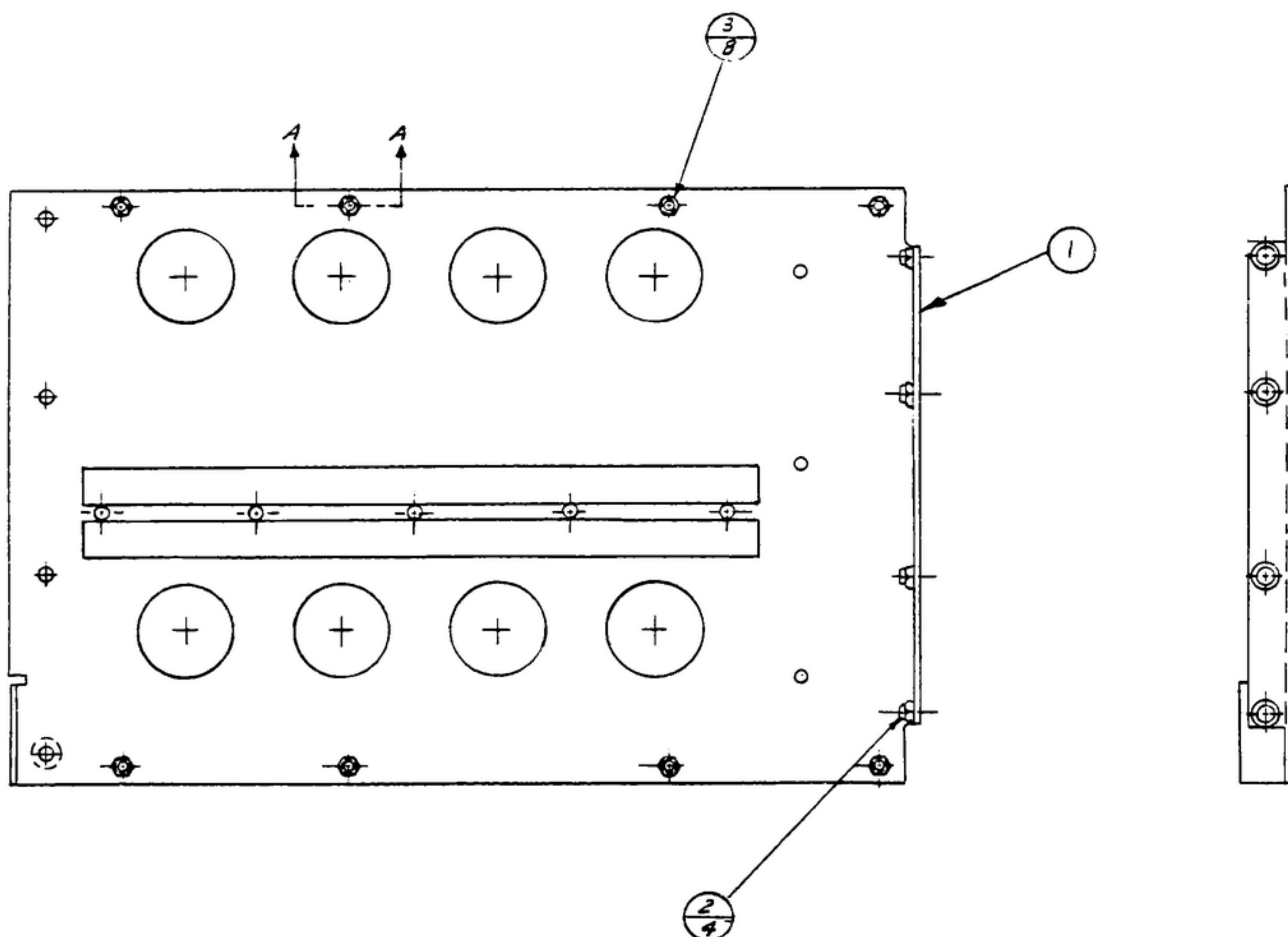
"THIS DOCUMENT HAS BEEN PURCHASED BY THE GOVERNMENT AND MAY BE REPRODUCED AND USED IN CONNECTION WITH ANY GOVERNMENT PROCUREMENT OR MAINTENANCE OPERATION."

NOTE: \*FOR INFORMATION ONLY, CONTRACTOR MAY AT HIS OPTION DEVIATE FROM THESE PROCESS DETAILS

REVISIONS			
SYM	DESCRIPTION	DATE	APPROVAL



SECTION A-A SCALE 4/1



NOTES:

1. PRESS (3) INTO (1) AS SHOWN
2. PRESS & ROLL (2) INTO (1) AS SHOWN
3. IN ALL SPLIT BALLOONS TOP FIGURE IS MATERIAL LIST ITEM INDICATOR & BOTTOM FIGURE IS QUANTITY.

*SWE. PART NO.	ITEM	REQD	PART NO.	DESCRIPTION	MATL	MATL SPEC
<del>572627-5</del>	3	8	SM-C-283166-1	NUT-INSERT CAPTIVE		
	2	4	SM-B-283164-2	NUT-STOP		
	1	1	SM-D-343613	FRAME-RIGHT SIDE		

LIST OF MATERIAL

UNLESS OTHERWISE SPECIFIED		STEWART WARNER ELECTRONICS ORDER NO. 42428-PC-59		FRAME ASSY RIGHT SIDE		DEPARTMENT OF THE ARMY SIGNAL CORPS ENGINEERING LABORATORIES FORT MONMOUTH NEW JERSEY	
DIMENSIONS ARE IN INCHES		SIGNAL CORPS					
TOLERANCES ON FRACTIONS DECIMALS ANGLES		REVIEWED PME					
SM-D-343619	SC-DE-248775	Drawn By: <i>P. J.</i>	Checked By: <i>C. Ballough</i>	APPROVED PME	DATE 27 OCT 59	SCALE 1/2	SM-C-343633
NEXT ASSY	USED ON	Chief Drafts	Eng Approval				
APPLICATION							