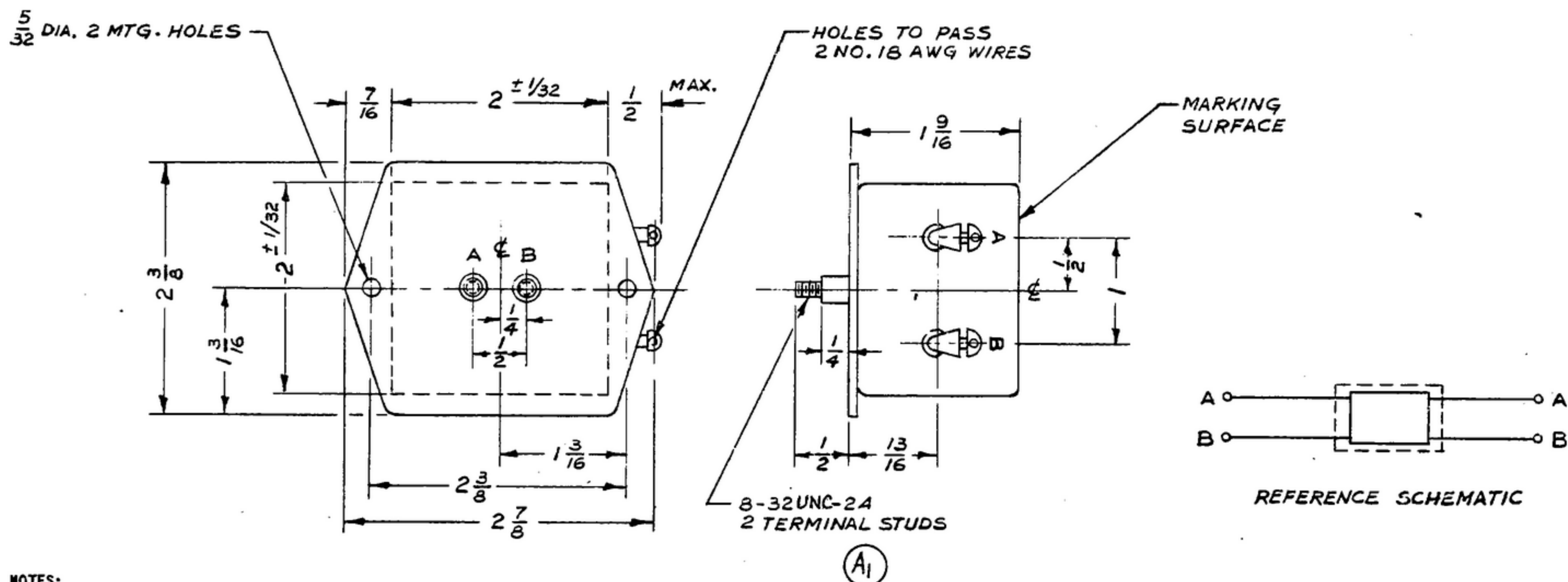


NOTICE: WHEN GOVERNMENT DRAWINGS, SPECIFICATIONS, OR OTHER DATA ARE USED FOR ANY PURPOSE OTHER THAN IN CONNECTION WITH A SPECIFICALLY RELATED GOVERNMENT PROCUREMENT OPERATION, THE UNITED STATES GOVERNMENT TAKES NO RESPONSIBILITY FOR ANY OMISSIONS, ERRORS, OR THE FACT THAT THE GOVERNMENT HAS MADE FORMULATIONS, PUBLISHED OR UNPUBLISHED, OR IN ANY MANNER, SPECIFICATIONS, OR OTHER DATA IS NOT TO BE REGARDED BY REPLICATION OR OTHERWISE AS IN ANY MANNER, INCLUDING THE MAKING OF ANY CLAIMS, RIGHTS OR CONTRACTS, OR CONSTITUTIONAL RIGHTS OR PERMISSION TO MANUFACTURE, USE, OR WILL ANY PATENTED INVENTION THAT MAY IN ANY WAY BE RELATED THERETO.

"THIS DOCUMENT HAS BEEN PURCHASED BY THE GOVERNMENT AND MAY BE REPRODUCED AND USED IN CONNECTION WITH ANY GOVERNMENT PROCUREMENT OR MAINTENANCE OPERATION."

NOTE: *FOR INFORMATION ONLY. CONTRACTOR MAY AT HIS OPTION DEVIATE FROM THESE PROCESS DETAILS

| REVISIONS | | | |
|-----------|--|-------------|-------------------------|
| SYM | DESCRIPTION | DATE | APPROVAL |
| A3 | (1) UNC WAS NC; (2) ADDED NOTES 13 & 14 (3) FL-EBIEAI WAS FL-FBIEAI | 22 MAR 1965 | 21592-PC-61 REV. PME |



NOTES:

1. FILTER SHALL MEET THE QUALIFICATION AND INSPECTION REQUIREMENTS OF THE LATEST VERSION OF MIL-F-15733 FOR TYPE FL-EBIEAI EXCEPT WHERE AMENDED BY NOTES.

AMENDMENTS

2. **STYLE:** THE STYLE SHALL BE OF THE SIZE AND CONFIGURATION AS SHOWN AND BE OF THE FOUR TERMINAL, DUAL COIL AND CAPACITOR TYPE HERMETICALLY SEALED.
3. **CURRENT RATING:** 3 AMPERES AT 250V RMS 60 CPS.
4. **CAPACITANCE TO GROUND:** 0.2 MFD MAXIMUM.
5. **TEMPERATURE RISE:** 20°C MAXIMUM
6. **VOLTAGE DROP:** 2V MAXIMUM
7. **OPERATING FREQUENCY:** 62 CPS MAXIMUM
8. **TERMINALS:** TERMINALS SHALL BE GLASS TO METAL HERMETIC SEAL TYPE. SOLDER LUG TERMINALS SHALL BE HOT TIN DIPPED OR OTHERWISE TREATED TO FACILITATE SOLDERING. TERMINALS AFTER PLATING SHALL BE GIVEN A PROTECTIVE COATING OF DIP COMPOSED OF 1 OUNCE OF STEARIC ACID (COMMERCIAL) DISSOLVED IN 1 GALLON OF XYLOL (COMMERCIAL). TERMINALS SHALL BE DIPPED OR COATED IN THE COMPOUND AT 20°C TO 23°C AND THEN DRIED.
9. **MARKING:** FILTERS SHALL BE MARKED WITH THE FOLLOWING INFORMATION IN ACCORDANCE WITH THE LATEST VERSION OF MIL-H-13231, GROUP II.
 - A. PART NO. C343666 AND PRIME MANUFACTURER'S FED. IDENTIFICATION CODE SYMBOLS*
 - B. SUPPLIER'S PART NO., FEDERAL IDENTIFICATION CODE SYMBOLS OR NAME.
 - C. RATED WORKING VOLTAGE, CURRENT AND MAXIMUM OPERATING FREQUENCY.
 - D. TERMINALS SHALL BE IDENTIFIED AT BOTH INPUT AND OUTPUT.
 - E. MARKING SHALL BE LOCATED SYMMETRICALLY.
10. MAY BE AS SUPPLIED BY POTTER CO., 1950 SHERIDAN ROAD, NORTH CHICAGO, ILL., PART NUMBER C-2034A, OR EQUAL, PROVIDED IT MEETS THE REQUIREMENTS OF THIS DRAWING.
11. **INSPECTION REQUIREMENTS:** IN ACCORDANCE WITH THE LATEST VERSION OF MIL-F-15733, GROUP A, EXCEPT WHERE AMENDED BY NOTES.
 - A. SAMPLING LEVEL AS DETERMINED BY QUALITY CONTROL DEPARTMENT.
12. **PRODUCTION ACCEPTANCE TESTS:**
 - A. DIELECTRIC WITHSTANDING VOLTAGE SHALL BE 800 VDC.
13. THE CAPACITOR USED INTERNALLY SHALL BE IN ACCORDANCE WITH THE APPLICABLE PORTION OF SPEC MIL-C-11693.
14. INSERTION LOSS TEST CIRCUIT SHALL BE ARRANGED AS SHOWN ON FIG 3 OF MIL-STD-220.

* STEWART-WARNER ELECTRONICS
FED. IFR. CODE 98738

| REQD | PART NO. | DESCRIPTION | MATL | MATL SPEC | NOTES |
|------------------|----------|-------------|------|-----------|-------|
| LIST OF MATERIAL | | | | | |

| | | | | | | | |
|---|---------|---------------------|---------|--|----------------|---------------------------------------|--|
| UNLESS OTHERWISE SPECIFIED DIMENSIONS ARE IN INCHES TOLERANCES ON FRACTIONS DECIMALS ANGLES ± 1/64 ± .005 ± — | | | | STEWART-WARNER ELECTRONICS 42429-PC-59 | | FILTER, RADIO INTERFERENCE | DEPARTMENT OF THE ARMY SIGNAL CORPS ENGINEERING LABORATORIES FORT MONMOUTH NEW JERSEY SM-C-343666 |
| | | | | SIGNAL CORPS | | | |
| DRAWN BY <i>John Ostrowski</i> | | REVIEWED <i>PME</i> | | | | | |
| CHECKED BY <i>J. J. [Signature]</i> | | APPROVED <i>PME</i> | | | | | |
| NEXT ASSY | USED ON | NEXT ASSY | USED ON | CHIEF DRAFTS | DATE 8 NOV. 60 | SCALE 1/1 | |
| SWE APPLICATION | | APPLICATION | | ENG APPROVAL <i>[Signature]</i> | | | |