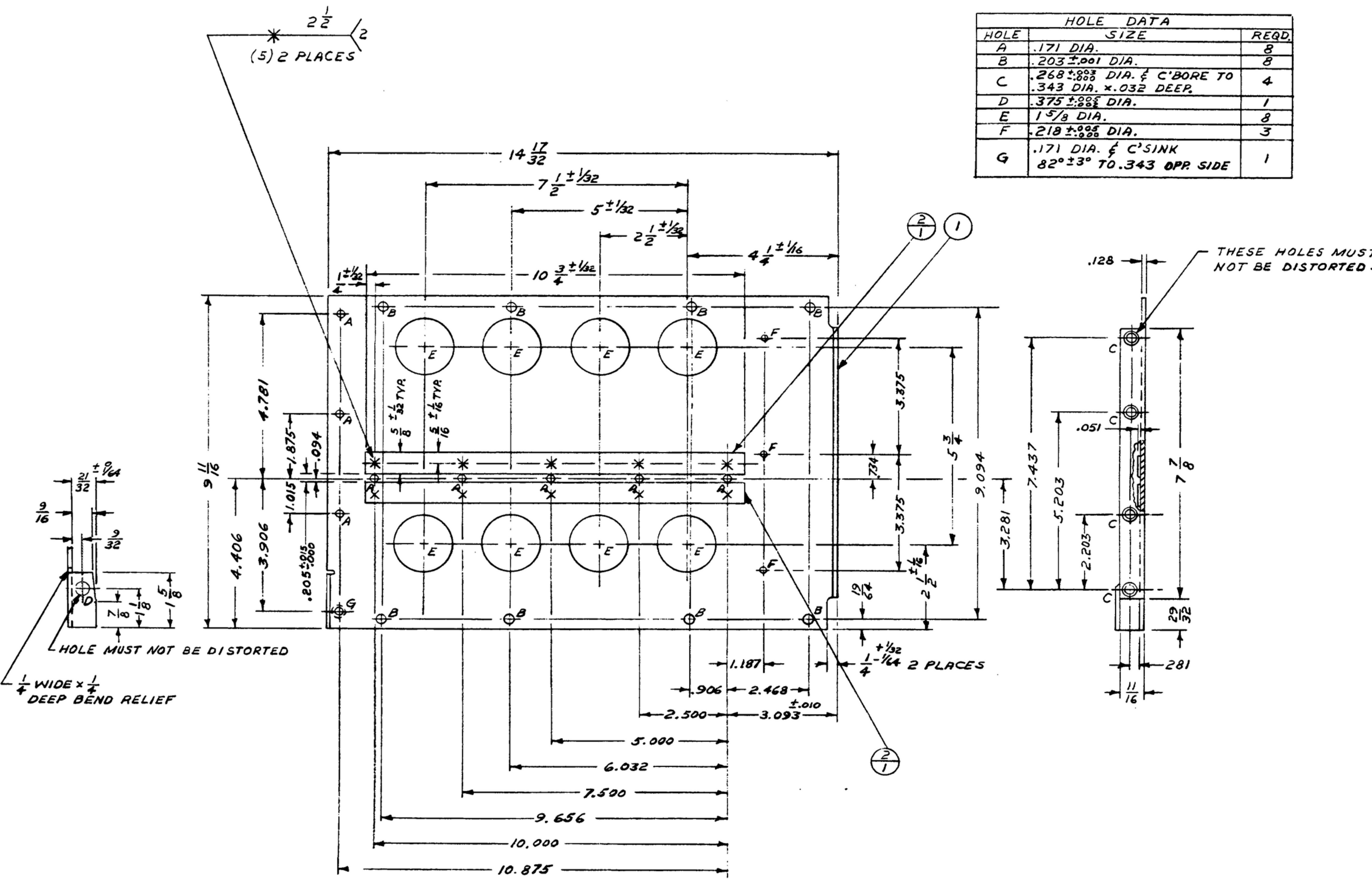


UNLESS OTHERWISE SPECIFIED, DIMENSIONS ARE TO BE TAKEN FROM THE UNFINISHED SURFACE OF THE DRAWING. DIMENSIONS TO BE TAKEN FROM THE FINISHED SURFACE OF THE DRAWING WILL BE INDICATED BY A FINISH SYMBOL. DIMENSIONS TO BE TAKEN FROM THE CENTER OF GRAVITY OF THE PART WILL BE INDICATED BY A CENTER OF GRAVITY SYMBOL. DIMENSIONS TO BE TAKEN FROM THE CENTER OF GRAVITY OF THE PART WILL BE INDICATED BY A CENTER OF GRAVITY SYMBOL. DIMENSIONS TO BE TAKEN FROM THE CENTER OF GRAVITY OF THE PART WILL BE INDICATED BY A CENTER OF GRAVITY SYMBOL.

NOTE: \*FOR INFORMATION ONLY. CONTRACTOR MAY AT HIS OPTION DEVIATE FROM THESE PROCESS DETAILS

REVISIONS			
SYM	DESCRIPTION	DATE	APPROVAL

HOLE DATA		
HOLE	SIZE	REQD.
A	.171 DIA.	8
B	.203 ±.001 DIA.	8
C	.268 ±.003 DIA. & C'BORE TO .343 DIA. x .032 DEEP.	4
D	.375 ±.003 DIA.	1
E	1 3/8 DIA.	8
F	2 1/8 ±.005 DIA.	3
G	.171 DIA. & C'SINK 82° ±3° TO .343 OPR SIDE	1



- NOTES:
1. MATERIAL: ALUMINUM ALLOY 5052, TEMPER H32 PER FED. SPEC. QQ-A-318.
  2. FINISH: E513 PER SPEC. MIL-F-14072.
  3. ALL INSIDE BEND & RELIEF RADII 3/64 MAX.
  4. WELDING SYMBOLS IN ACCORDANCE WITH JAN STD-19. WELDING SHALL BE IN ACCORDANCE WITH SPEC. MIL-W-6858.
  5. SPOTWELD LOCATIONS MAY VARY ± 1/8.
  6. IN ALL SPLIT BALLOONS TOP FIGURE IS MATERIAL LIST ITEM INDICATOR & BOTTOM FIGURE IS QUANTITY.

ITEM	QTY	PART NO.	DESCRIPTION	MATL.	MATL. SPEC.
2	2	SM-D-34363-2	STIFFENER		
1	1	SM-D-34363-1	FRAME		

UNLESS OTHERWISE SPECIFIED DIMENSIONS ARE IN INCHES TOLERANCES ON FRACTIONS DECIMALS ANGLES ± 1/64 ± .005		STEWART-WARNER-ELECTRONICS ORDER NO. 42428-PC-59	LIST OF MATERIAL	DEPARTMENT OF THE ARMY SIGNAL CORPS ENGINEERING LABORATORIES FORT MONMOUTH NEW JERSEY
SM-C-343633 SCDL-248715		REVIEWED BY: C. Bykowski		
NEXT ASSY	USED ON	APPROVED BY: P.M.E.	APPROVED	DATE: 9 NOV 59
APPLICATION				SCALE: 1/2

SM-D-343613

WHEN REFERRING TO THIS DRAWING STATE DRAWING NO., APPLICABLE ISSUE SYMBOL, IF ANY, AND DATE.