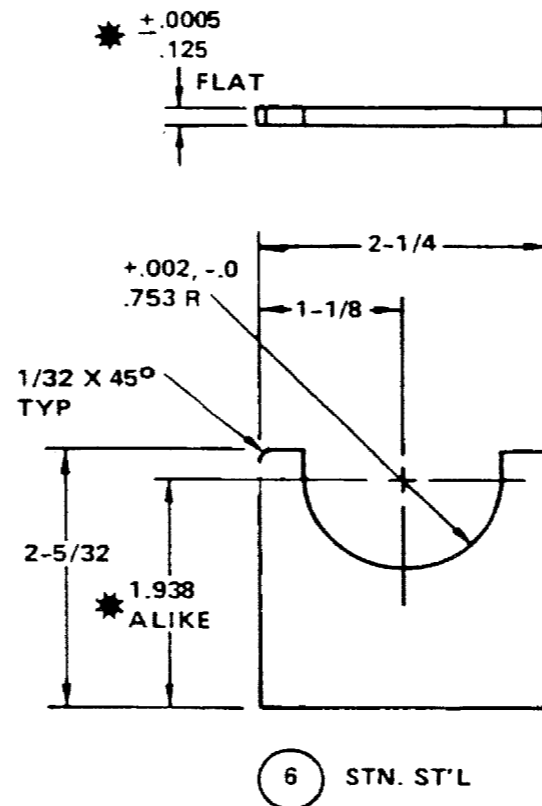
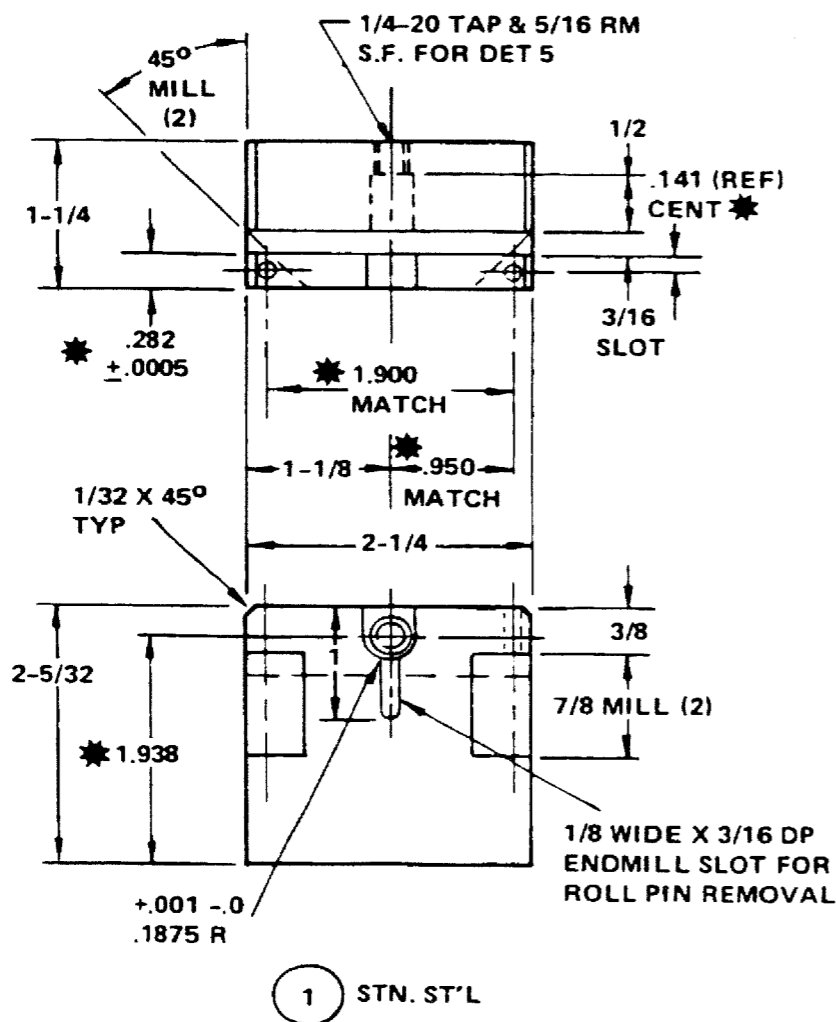
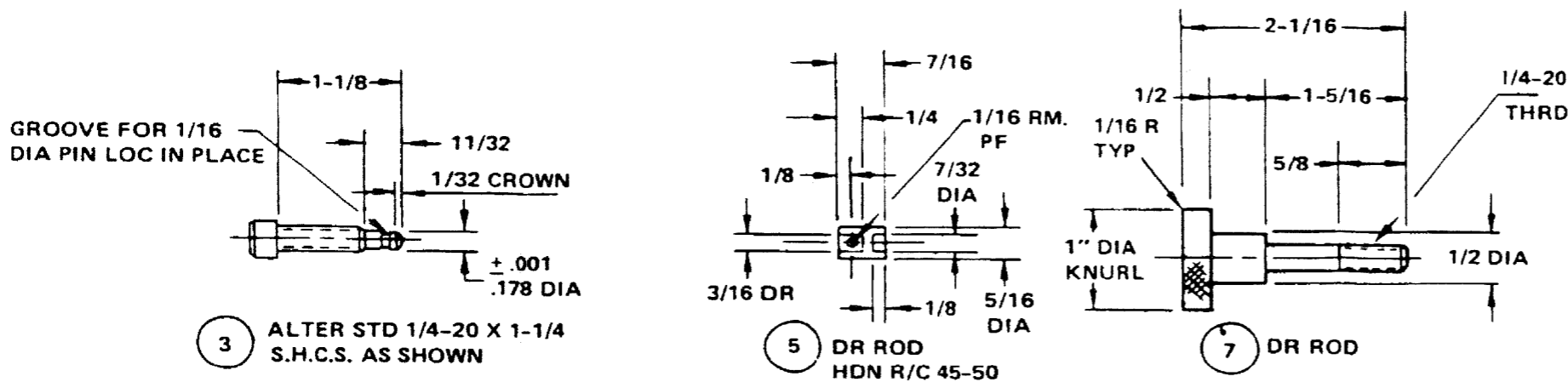


Figure FO 6-1. Carriage Motor Drill Jig Manufacturing Drawings (Sheet 1 of 2)



NOTE  
 \* INSPECT THESE DIMENSIONS

LIST OF MATERIAL				
13	PUNCH	1/16 DIA DR BLK	HON R/C 60-65	1
12	BASE PLT	3/4 X 2-1/4 X 5-1/4	STN. ST'L	1
11	DOWEL	1/8 DIA X 3/4	STK	2
10	BUSH'G PLATE	1/4 X 3/4 X 2-3/8	T.S.	1
9	CLAMP BLK	3/4 X 2-1/2 X 2-5/8	ALUM	1
8	FL WASHER	1/4	STK	1
7	CLAMP SCR	1'' DIA X 2-3/16	DR. ROD	1
6	STOP PLATE	1/8 X 2-1/4 X 2-1/4	STN. ST'L	1
5	CLAMP PAD	5/16 DIA X 9/16	DR. ROD	1
4	DOWEL	1/16 DIA X 5/16	STK	1
3	S. H. C. S.	1/4-20 X 1-1/4	STK	1
2	INSTANT THUMBSCREW	1/4	STK	1
1	BLOCK		STN. ST'L	1

Figure FO 6-1. Carriage Motor Drill Jig Manufacturing Drawings (Sheet 2 of 2)